

LIGHTNING RIDGE CENTRAL SCHOOL



Principal:
Deputy Principal:

Mr Richard Finter
Mrs Margaret Morriss

PO Box 294, Kaolin Street
Lightning Ridge NSW 2834
T 02 68290511 F 02 68290137
E lightningr-c.school@det.nsw.edu.au

Term 4 Week 6 2022



Principal's Report

As we arrive at the midway point of the term, I would like to remind parents and carers that school routines remain as normal and that attendance is mandatory unless your child is unwell. Irregular attendance has a negative impact on student learning.

In the last semester, Primary have been implementing the literacy intervention program, Multi-lit which is having a very positive impact on the literacy levels of many of our students. However, progress has been slowed for some whose attendance has not been consistent. The benefits of regular and consistent attendance, and that includes getting to school on time, are myriad so, unless your child is ill please send them to school.

"People are being mean to me...." Part II.

Last newsletter I wrote about friendships and friendship groups. The purpose of those jottings was to provide a possible "in" when talking to your child about the nature of friendship, particularly if that child is going through a patch where their perception is that everyone is being mean to me. Last newsletter focused on a number of issues. These included knowing that conflict in any friendship is normal; knowing one's personal boundaries and what behaviours are deal breakers, the kinds of behaviours from "so-called" friends that leave you feeling awful, and; the perils in looking to punish those who have hurt your feelings.

This week's final instalment begins with: You don't own your friends. It is almost universally understood that being possessive of one's friends is a huge turn off for those same friends. It also makes the possessive person look needy when they are unhappy that their friends have other friends. Kids, like adults, need to realise as early as possible that their friends are allowed to have other friends, or even just be with other people. It will not always feel good, but it is not necessarily a personal rejection.

There are different levels of friendship. An individual can be friends – or at least friendly – with the people in their class or those with whom they share after school activities like sport, band or the musical without it being a rejection of a long-standing friendship. Some friendships developed in such situations will seldom go further, the people involved being more like acquaintances than true friends. And that is perfectly normal. Good friends should be prepared to allow their friends to explore other friendships without jealousy or frightening projections like, "I'm being replaced." Importantly, your kids should know that they can do the same; allow other friendships into their lives without the need to make every one of those new friendships a "Best Friend for Life" (BFFL) deal Friends with some but kind to all.



A Crafty Sip & Stitch

Every Tuesday Afternoon

3:30pm - 6:00pm

Bandana Day

Fri 18th Nov

Kindy Start Commences

Fri 18th Nov

10am - 12pm

Year 12 Formal

Sat 19th Nov

T123 Laptop Fees due

Fri 25th Nov

Water Safety Program

Years 2 - 6

Mon 21st Nov – Fri 2nd Dec

Year 6 Farewell

Mon 12th Dec

K-6 Opal Pool Party

Tues 13th Dec

Presentation Day Assembly

Wed 14th Dec - 9:30am

Join us on
SkoolBag

 Like us on
Facebook

2022 School Newsletter now available online via our Skoolbag App
and website on www.lightningr-c.schools.nsw.edu.au

Continued

It is important for our children to realise that no student needs to be friends with everyone at school, but every student needs to be kind.

Why?

Because school is so much easier and more enjoyable when those within it make the decision to look out for each other's wellbeing. At some point or perhaps even several times in each of our lives, we each will suffer a moment of humiliation. It would be reassuring to think that those with whom we spend so very much of our waking hours were more prepared to treat us with compassion and kindness at those times, rather than see such moments of vulnerability as opportunities to "get" us. Learning how to navigate friendships is a tricky road and often a lifelong process. As adults, experience will have ensured that we know this all too well. Kids, like the rest of us, will make bad judgement calls at times. The poor choices our kids make when navigating friendships are often based on fear or ignorance rather than kindness or knowledge. Our job is always to make it possible for them to learn from the good days what works, and learn from the bad days what they can do better in the future... even in friendships.

**The only way
to have a
friend is to be
one.**

Ralph Waldo Emerson



Secondary Deputy Principal's Report

During Week 5, students in Years 7 –10 sat their yearly exams in most subjects and completed check in assessments in literacy and numeracy, these results will be used to assist us in the students learning. Students are now working towards completing course work, assessment tasks and practical projects. School continues until Friday 16th December, students need to bring all their equipment and be ready for learning until the end of the year.

Mrs Wilson, our Careers Advisor, has organised a number of opportunities for our Stage 5 students these include work experience programs, TAFE delivered courses in Hair dressing, construction, health skills and first aid training—something for everyone. It is essential that all students arrive on time to school or they may miss out on these courses.

Recently we had a few staff changes due to the floods, thanks to Ms Gates & Miss Thompson for assisting in taking classes whilst Mrs Whale & Ms Clothier were reassigned to Walgett schools. Thank you to our students for adjusting to a change in staff and showing respect to our new staff.





Primary Assistant Principal's Report

Term 4 has already proven to be a very busy, fun, and exciting last term of the year!

On a sad note, due to the floods we have had to cancel our Stage 2 excursion to Dubbo Zoo next week.

I am sure that our Year 6 students are looking forward to all the special events that have been planned for them, as they are coming to the end of their Primary school years. Looking at the school calendar here are some of the upcoming events for our K-6 students.

- Year 6 swimming for sport
- Kindy Start
- Year 2-6 intensive swimming program
- 2023 Leadership speeches and voting (week 9)
- Year 6 Transition to High school
- Year 6 Farewell
- CAPA night
- PBL fun day
- Presentation Day
- End of year celebrations

What an exciting and very busy term that we have ahead of us!



Halloween Mufti Day



LRCS Students raised \$90.00 for the Royal Flying Doctors for Halloween Mufti Day! Students had lots of fun dressing up in our spooky Halloween costumes. Well done to everyone who got into the spirit of the day.



Music Award Winners

Each week all students who have been following our Turtle Goals and displaying positive behaviour are put into a draw. Three students from primary and three from secondary are drawn out. These students then get to choose a song which will be played for our new bell music. Congratulations to our Week 5 & 6 winners.

Primary winners:

Heidi Bladen, Ava Pelosi, Solomon Seabrook, Khiah Boney, Tallara Bolton-Haynes and Ruby Webb

Secondary Winners:

Brett McFadden, RJ Moseling, Nick Newton, Blake Munro, Chanel Kenny and Katarina Thompson



Positive Behaviour for Learning

Lightning Ridge Central School share a Positive Behaviour for Learning focus with our Students each fortnight. Students who show exceptional PBL values are rewarded throughout the year with excursions, special activities and treats.



This fortnight's PBL focus is Follow Instructions



This symbol represents a journey, with an adult footprint on one side and small dots for children's footprints on the other.

Children are following the adult, not being herded or chased - this is a significant point. They are following, but are still on their own side of the track, showing that balance between self-direction and social support.

Primary Students should arrive at school by 8:55am

Secondary Students should arrive at school by 8:40am

LATE IS NOT GREAT



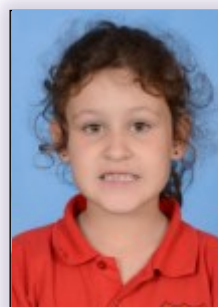
**If you need to get a message to
your child please contact the
school office by 2:30pm.**



Worth your Weight in Opal

Aarib Khurram ES1J

Aarib was nominated by Miss Bird for excellent effort in Inialit.
Well done Aarib!



Worth your Weight in Opal

Scout Newman S1D

Scout was nominated by Mrs Barclay for following instructions in the library, showing respect and being enthusiastic.
Awesome Effort Scout!



Worth your Weight in Opal

Jovi Bailey S20

Jovi was nominated by Mr Ellery for attending school every day this term with an amazing attitude, willingness to learn and much improved effort.
Keep up the great work Jovi!



Worth your Weight in Opal

Aslan Kosmalla S3C

Aslan was nominated by Miss Loder for demonstrating enthusiasm, natural flair and 'spunk' in dancing practice. Yulu-gi star!
Well done Aslan!

Early Stage 1



ES1P has been working with Mrs Currey's stage 5 Agriculture class to introduce chickens into the primary area. Kindergarten Puggles helped get the chicken coop ready. Each day they visit the chickens to ensure they have food and water and to collect any eggs.

So far we have been getting 1 egg a day!

We called the chicken house 'Cluckingham Palace' and named our 3 hens Rosie, Henny Penny and Chickeletta.



In dance ES1J explored the story of Tiddalik the frog by dancing like the eel that made Tiddalik laugh. They made shapes with their bodies by themselves and with a partner while moving to the music.



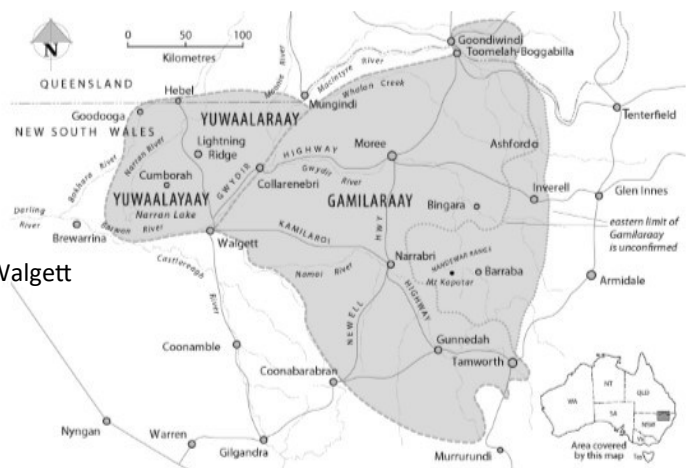
Yuwaalaraay is the dialect of the Lightning Ridge area. The name of the language and Aboriginal people of the Balonne River Region.

Yuwaalaraay

Word of the Week

warrambul = flood channel, overflow

You can't cross the warrambul if you want to get to Walgett





Primary PBL Awards



PRIDE AWARD

PRESENTED FOR SHOWING PRIDE BY
CONSISTENTLY DOING QUALITY WORK!



RESPONSIBILITY AWARD

PRESENTED FOR MAKING RESPONSIBLE CHOICES
WITH THEIR LEARNING AND BEHAVIOUR!



RESPECT AWARD

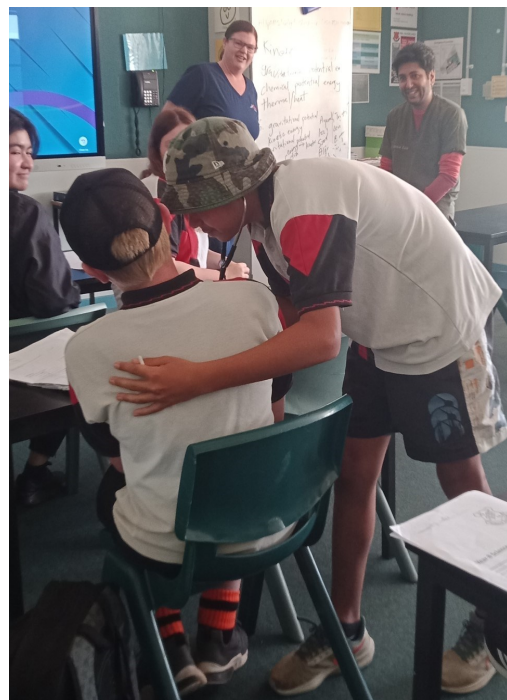
PRESENTED FOR CONTINUALLY SHOWING
RESPECT AND
FOLLOWING
INSTRUCTIONS!

Secondary Science

Safety first! Which protection will keep the egg the safest? Year 7 Science students testing out how a padded egg will withstand a fall due to the force of gravity.



Science in action. Exploring the use of Science in the field of health (medicine and nursing). Below is Tristan and Riley testing each other with a stethoscope.





A colorful poster for 'BANDANA Day' featuring confetti, a Lightning Ridge C.S. crest, photos of students, a cake stall, and gold coins labeled 'Cakes' and 'Gold Coin'.

BANDANA Day

\$5

Cake Stall
at Recess/Lunch

Friday 18th November 2022

With your support, funds raised from Bandana Day will help young people impacted by cancer get access to programs, counselling and peer support.

LAPTOP PAYMENTS NOW DUE

T123 Laptop Payments due by Friday 25th November, 2022

Laptop lease payments are due Friday of week 7 of every Term. Any Laptops with outstanding payments will be collected in Week 8 and stored at Lightning Ridge Central School until the laptop lease payment is made.

Payments can be paid online via Skoolbag or our School website www.lightningr-c.schools.nsw.edu.au by clicking on "Make a payment" and following the prompts by using your credit/debit card.

Alternatively, you can pay cash, cheque or EFTPOS at the School office.





WE NEED YOUR HELP

WE ARE LOOKING FOR PARENT AND
COMMUNITY VOLUNTEERS TO HELP IN OUR
PRIMARY CLASSROOMS.

PLEASE CONTACT OUR SCHOOL OFFICE TO REGISTER YOUR
INTEREST - (02) 6829 0511



Every Day COUNTS

ATTEND TODAY
ACHIEVE TOMORROW



Minutes lost = days lost per year

A couple of minutes here and there doesn't seem like much, but...

When your child misses just...

they miss days per year

5 mins
per day



=

3 days

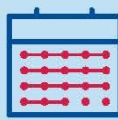


30 mins
per day



=

18 days



Patterns of lateness
can have a serious
impact on your child's
education.

Why attendance matters

When your child misses school they miss important opportunities to...



Learn



Make friends



Build skills through fun

Lightning Ridge Central School

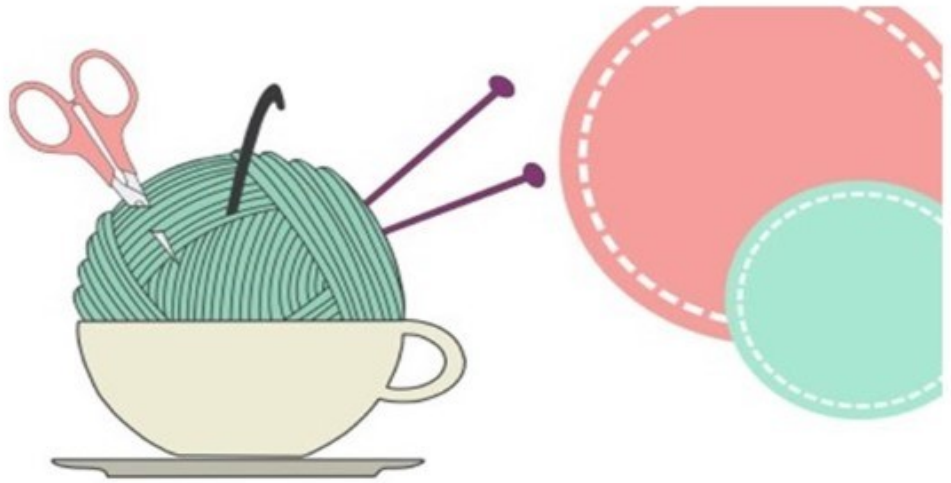
Enrolments for Kindergarten 2023 are now open.

Sign up for **Kindy Start** to help with transition to school.

Kindy Start will run on Fridays beginning on **November 18th 2022.**

More information is available at the school office. Please contact Mrs Mary Cross at the school with any questions.





Parents, Carers and Community Members

Join us for

A Crafty Sip and Stitch

The Students at Lightning Ridge Central School are polishing off their dance moves for their annual school performance and we need your help to create their costumes and make the night a success!

You don't need any sewing/ crafting ability, just come along and enjoy an afternoon of fun!

Term 4 Sip & Stitch Dates

11th October
18th October
25th October
1st November
8th November
15th November
22nd November
29th November



Materials and equipment will be provided



Free refreshments and nibbles available

All Welcome

Lightning Ridge Central School
Kaolin Street, Lightning Ridge

Tuesdays 3:30pm - 6pm

We have over 200 costumes, backdrops and props to make
any help is greatly appreciated

Lightning Ridge Central School

presents

CAPA SCHOOL

SHOW

inspired by

Disney

Tickets available at the school office

\$5ea or \$25 per family

Wednesday 7th December

DOORS OPEN AT 4:30PM

Lightning Ridge District Bowling Club



WEDNESDAYS

7:30am

Senior Cola

Stages 3-6 Welcome



UNIFORM DONATIONS

**HAS YOUR CHILD OUTGROWN THEIR
UNIFORM?**

*The Secondhand Clothing Pool will gladly
accept the donation of all clean and
wearable uniform items*



Donations can be dropped to the School Office

KEEPING SAFE

Do you know the 3 R's?

Recognise Are you safe?

React What can you do?

Report Who can you tell?

You have
the right to
be safe and
you can get
help



Talk to the
5 grownups on
your safety network
until you get the
help you need

SUPA Club

Scripture Union Primary Age Club

*Mondays
at lunch
in the library*

Join us for:

*Games, Music,
Bible time, Craft*

For K-6/ All welcome!

This term our theme is



*For more information contact Heather
(Scripture coordinator, LR Community Church): hmrobinson143@gmail.com*

Check your LOST PROPERTY

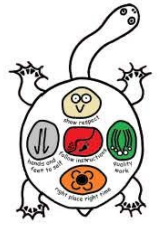


Our Lost Property tub is over flowing.
Please feel free to come and check for
your child's belongings



Lightning Ridge Central School

Respect · Responsibility · Pride



1 November 2022

Presentation Day 2022

Dear Community Member,

The Lightning Ridge Central School Presentation Day will be held on Wednesday 14th December at 9:30 am in the school gymnasium.

We would like you to consider making a donation towards our Students book prize at Presentation Day. We have over 338 students enrolled at our School and have a special award for two Students in each class who have excelled throughout the year. The Students selected will receive a special book prize to the approximate value of \$30.00. Every Student in Kindergarten will each receive a book to commemorate their first year at school.

With your generous support we would like to continue these prestigious awards and once again kindly ask for your donation.

In return for your generous donation, we invite you to join us for Presentation Day. You will be supplied with a tax invoice, be publicly thanked, have your name published on the Presentation Day Program and receive a certificate of appreciation to display in your home or business.

To promptly organise the awards in time for Presentation Day, it would be helpful if your donation could be made by 14th November 2022. Donations can be mailed to the School (address listed below), made by cash, cheque or Eftpos at the School's Office or online at www.lightningr-c.schools.nsw.edu.au. Click on "Make a Payment" and follow the prompts. All donations can be made either anonymously or with full public thanks.

Yours faithfully,

Richard Finter
Principal

□

Please find enclosed cheque/cash for \$_____ being a donation towards the 2022 Lightning Ridge Central School Presentation Day Awards.

I do not mind being publicly thanked for our donation

☐

I wish my donation to be made anonymously

☐

Signed:

Name:



Lightning Ridge Central School

P&C Uniform Shop Order Form

WHOLE SCHOOL ITEMS	PRICE	SIZE	QUANTITY	TOTAL
Caps – Black	\$7.00			
Hats – Bucket	\$5.00			
Hats – Red wide brim	\$7.00			
Library Bags	\$7.00			
Black Jackets (limited stock and sizes)	\$20.00			
Sports Shirts – House colours	\$7.00			
PRIMARY K-6	PRICE	SIZE	QUANTITY	TOTAL
Shirts K-4 – Red	\$20.00			
Shirts Years 5 & 6 – Red/ White/ Black	\$25.00			
Shorts – Black	\$15.00			
Skorts – Black	\$15.00			
Sloppy Joe – Red (limited stock and sizes)	\$20.00			
Hoodie – Red	\$30.00			
Trackpants – Black Microfibre	\$25.00			
Trackpants – Black Fleecy	\$20.00			
SECONDARY 7-12	PRICE	SIZE	QUANTITY	TOTAL
Shirts Years 7 – 9 Red/ White/ Black	\$25.00			
Shirts Year 10 – 12 White	\$20.00			
Shorts – Black	\$15.00			
Skorts – Black	\$15.00			
Jacket – Red (limited stock and sizes)	\$35.00			
Hoodie – Black	\$30.00			
Canterbury Jersey	\$65.00			
Trackpants – Black Microfibre	\$25.00			
Trackpants – Black Fleecy	\$20.00			
			TOTAL:	

CONTACT DETAILS:

Name:.....

Contact Number:

Sport house (if required):

Please indicate:

☐

Cash included

☐

Pay (with cash) on pickup from the office

LRCS - CANTEEN MENU - 2022

Snacks - (Recess & Lunch)		Sandwiches		Hot Foods	
Crunch cups (cheese, carrot, celery & cucumber) w/ Aioli sauce		(Gluten free bread available)		Village sausage roll	\$3.80
	\$3.20	Cheese	\$3.20	Travellers beef pie	\$4.00
Yoplait yoghurt 175gm	\$2.50	Cheese salad	\$4.20	Party pies village 60gm	\$1.30
Grain waves (sour crème)	\$1.20	Cheese & tomato	\$3.60	Sweet chilli chicken tenders	\$1.60
Cheese sticks	\$1.00	Ham, cheese & tomato	\$4.20	Chicken & gravy roll	\$5.50
Lite muffins 75gm (chocolate)	\$2.20	Ham or chicken salad	\$4.50	Garlic bread (Good Tucker 75gm)	\$1.50
Koala popcorn (plain, sweet & salty or butterscotch)	\$1.50	Ham or chicken	\$3.60	UFO ½ roll	\$2.00
Fresh fruit (banana, apple, mandarins)	\$1.00- \$1.50	Chicken chilli tender, lettuce & mayo	\$4.50	Cheese & tomato sauce	\$2.00
Fruit salad cups	\$1.50	Ham & cheese	\$4.00	Chicken strips per bag (6)	\$3.20
Red rock deli chips (honey soy or sea salt)	\$1.20	Chicken, lettuce & mayo	\$4.20	McCains pizza (Ham/pineapple or ham/cheese)	\$3.00
		Egg, lettuce & mayo	\$4.00	Beefburger (lettuce, tomato, cheese & beetroot)	\$6.00
		Vegemite	\$2.80	Chicken burger (lettuce, tomato & mayo)	\$6.00
		Wraps (Whole Grain)		Chicken strips (each)	\$0.70
		Salad wraps	\$6.50	Beef or chicken noodles	\$2.00
		Chicken or ham salad	\$7.00	Hot Dogs (w/ sauce: tomato, bbq, mustard)	\$4.00
		Chicken, lettuce & mayo	\$6.00	w/ cheese	\$0.50
		Chilli tender, lettuce & mayo	\$6.50		
		Small Salad Bowls		Toasted Sandwiches (Via order)	
		Ham & Cheese	\$5.50	Cheese & ham	\$4.00
		Sweet chilli tenders	\$5.50	Ham, cheese & tomato	\$4.20
		Egg & Cheese	\$5.50	Cheese	\$3.20
		Chicken	\$5.50	Chicken & cheese	\$4.20
		Salad	\$5.50		
		(All salads come with lettuce, tomato, carrot, cucumber, beetroot, onion, pineapple & mayo)		Miscellaneous	
		Optional Extras for Salad Bowls		Tomato or BBQ sauce	\$0.30
		Also available mayonnaise, Aioli sauce or French/Italian dressing.		Bundle of lunch bags	\$2.50
		Ice-creams - (Lunch only)			
		Ice-cream cups	\$1.20	CANTEEN CLOSING AT 9:00AM FOR ORDERS! NO EXCEPTIONS!	
		w/ mini milo packets	\$0.30		
		Ka blueys (blue/s/watermelon & lemon)	\$0.60		
		Paddle Pops (Choc & Rainbow)	\$2.00		



**PLEASE PUT RECESS AND LUNCH ORDERS
ON SEPARATE BAGS, AND DON'T FORGET
NAME AND CLASS.**