

LIGHTNING RIDGE CENTRAL SCHOOL



Principal:
Deputy Principal:

Mr Richard Finter
Mrs Margaret Morris

PO Box 294, Kaolin Street
Lightning Ridge NSW 2834
T 02 68290511 F 02 68290137
E lightningr-c.school@det.nsw.edu.au

Term 4 Week 2 2022



Principal's Report

Welcome back to Term 4 for what will be a very busy term. Traditionally and unfortunately student attendance declines in term 4 and this has a significant impact on the continuity of student learning and hence on student outcomes. Normal lessons will continue up to and including Friday 16th December which is now the last day for students, following a decision by the NSW government to make Monday 19th December a

Staff Development Day.

The NSW Department of Education as an organisation takes school attendance very seriously, as do we here at Lightning Ridge Central School. Student attendance in Government Schools is compulsory and it is the responsibility of Parents / Carers to ensure that your child attends school every day. This daily attendance is important for your child to achieve their educational best. When your child attends school every day it means that learning becomes easier and your child can build and maintain friendships with their classmates. Punctuality and routine are important skills to learn, and so arriving at school on time means your child will not miss out on any important learning activities.

Arriving late at school is considered a partial absence and must be explained by parents/carers in writing. On occasion your child may be absent from school. Reasons that the Department deem justified for a student absence include:

- Being sick, or having an infectious disease
- Having an unavoidable medical appointment
- Exceptional or urgent family circumstances (e.g. attending a funeral)

All absences must be explained in writing, submitted on the schoolbag app or a phone call to the school office by parents and/or carers. Following an absence from school parents/carers must provide an explanation before 7 days have passed.

We encourage all families to travel during school holidays. However, if it is necessary for your child to take extended leave from school, parents/carers must collect an Application for Extended Leave form from the School Office to be completed. This application needs approval from the school Principal before any of your travel plans have been confirmed as your child will need to receive a Certificate of Extended Leave.

Lightning Ridge Central School recognises that working collaboratively with students and their families is the best way to support the regular attendance of our students. The school's Learning and Support, and Attendance Teams identify the learning and support needs of our students whose attendance patterns are of concern. Consequences for frequent unexplained absences, may result in an Application to the Home School Liaison Program and contact with other services and agencies to enhance the effectiveness of interventions with students and families. We will work together to identify and implement strategies to get every student to school.

DET School Attendance policy: <https://education.nsw.gov.au/policy-library/policies/pd-2005-0259>

2022 School Newsletter now available online via our Skoolbag App and website on www.lightningr-c.schools.nsw.edu.au



A Crafty Sip & Stitch

Every Tuesday Afternoon

3:30pm - 6:00pm

World Teacher's Day

Fri 28th Oct

Year 7 - 10 Yearly Exams

Week 5

Mon 7th - Wed 9th Nov

Mid term Break

Fri 11th Nov - Mon 14th Nov

Stage 2 Dubbo Excursion

Tues 15th - Wed 16th Nov

Kindy Start Commences

Fri 18th Nov

10am - 12pm

Year 12 Formal

Sat 19th Nov

CAPA Performance

Wed 7th Dec

Presentation Day

Wed 14th Dec

Join us on

SkoolBag



Like us on
Facebook



Secondary Principal's Report

During Term 4, students will continue their learning in classes up until Friday 16th December. This includes arriving on time to school, in school uniform and ready to learn with books, pens and a laptop every day. Most importantly students should have their phones in their Yondr pouch or hand their phone to the front office for collection prior to leaving school.

Good luck to our Year 12 students who are currently sitting their HSC examinations. Year 11 are anxiously awaiting their yearly reports which will guide them in their studies for Year 12.

Our Careers advisor Mrs Wilson has organised a number of opportunities for our Stage 5 students. This week a group of students are in Moree to attend TAFE and attend the Construction Traineeship Head Start program. The transformational Health & Disability Training will be held at school in Week 2. Mrs Wilson has also organised a number of programs later in the term for Stage 5 students.

Students in Stage 4 & 5 will have their yearly examinations in Week 5 of this term, it is essential that all students attend school during this week to enable staff to correctly assess their abilities. An examination timetable will be published shortly.



Primary Assistant Principal's Report

WOW Term 4 already! As we head into the final term of the year the weather starts warming up. It is still cool of a morning so please put your child's name on their jumpers, it makes it much easier to return to them if they are misplaced or sat down during the day as it warms up. If your child has lost a jumper, please check the lost property as it is currently overflowing with jumpers that have no names.

This term all Primary students will be participating in The Zones of Regulation curriculum, which are lessons and activities designed to help students gain skills in self-regulation. Self-regulation can go by many names, such as self-control, self-management, and impulse control. It is defined as the best state of alertness of both the body and emotions for the specific situation. For example, when a student plays on the playground or in a competitive game, it is beneficial to have a higher state of alertness. However, that same state would not be appropriate in the library. The lessons and learning activities are designed to help the students recognize when they are in the different Zones, as well as learn how to use strategies to change or stay in the Zone they are in. In addition to addressing self-regulation, the students will gain an increased vocabulary of emotional terms, skills in reading other people's facial expressions, perspective about how others see and react to their behaviour, insight into events that trigger their behaviour, calming and alerting strategies, and problem-solving skills.

You may hear your child talking about what Zone they are in at home. The **Red Zone** is used to describe extremely heightened states of alertness and intense emotions. A person may be elated or experiencing anger, rage, devastation, or terror when in the Red Zone.

The **Yellow Zone** is also used to describe a heightened state of alertness and elevated emotions, however one has more control when they are in the Yellow Zone. A person may be experiencing stress, frustration, anxiety, excitement, silliness, the wiggles, or nervousness when in the Yellow Zone. The **Green Zone** is used to describe a calm state of alertness. A person may be described as happy, focused, content, or ready to learn when in the Green Zone. This is the zone where optimal learning occurs. The **Blue Zone** is used to describe low states of alertness and down feelings such as when one feels sad, tired, sick, or bored. The Zones can be compared to traffic signs. When given a green light or in the Green Zone, one is "good to go". A yellow sign means be aware or take caution, which applies to the Yellow Zone. A red light or stop sign means stop, and when one is the Red Zone this often is the case. The Blue Zone can be compared to the rest area signs where one goes to rest or re-energize.



Figure 2: Wall Posters of the Zones



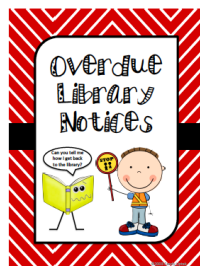
Library Report

Library Days

Tuesday – S20, S2H, S1B & S1D

Wednesday – S3C, S3B, S23N & MC1

Thursday – ES1J & ES1P



Please return your Library books as soon as possible. Thank you!

Music Choice Awards



Each week all students who have been following our turtle goals and displaying positive behaviour are put into a draw. Three students from primary and three from secondary are drawn out. These students then get to choose a song which will be played for our new bell music. Congratulations to Aria, Lilah and Kingston from primary and Levi, Izabella and Parker from secondary.

Kindergarten



Kindergarten Animal Language Books

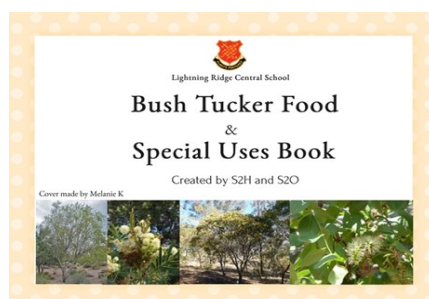
Kindergarten would like to thank our amazing AEO Tania Kennedy for organising and putting together our Animal Language books. Every child painted Australian animals and Tania put together booklets with their paintings and with the English and Yuwalaaraay name for each animal.

The students painted the animals from the late Eve Brown's colouring books and thought it was a beautiful way to pay our respects to an amazing artist.



Stage 2

Stage 2 studied the features of an information report and worked together to create an informative book about the local bush tucker and medicine around Lightning Ridge. The students had to investigate and research its scientific and Yuwaalaraay name, the plants traditional use, description and location. Each student created a page for the whole class book and utilised their iPad skills using 'Book Creator'. This term, students will do a book study about 'Tea and Sugar Christmas' which tells the story of the Tea and Sugar train, that carted groceries, news, medical services and other goods from Port Augusta to Kalgoorlie for 81 years between 1915 to 1996 and was a real lifeline for many isolated communities.



Positive Behaviour for Learning

Lightning Ridge Central School share a Positive Behaviour for Learning focus with our Students each fortnight. Students who show exceptional PBL values are rewarded throughout the year with excursions, special activities and treats.

This fortnight's PBL focus is Hands and Feet To Self



This symbol represents emu tracks because emu's have no arms, and in conflict they have to either use their heads or move away, or both.

Students are reminded that they must keep their hands and feet to themselves at all times. This includes showing respect for others by asking if you can use their pens and pencils.

Primary Students should arrive at school by 8:55am

Secondary Students should arrive at school by 8:40am

LATE IS NOT GREAT



Worth your Weight in Opal

Layla Samuelsson ES1P

Layla was nominated by Mrs Cross for making consistent improvement in her reading. Well done Layla!



Worth your Weight in Opal

Larri Sands S1D

Larri was nominated by Mrs Cross for making consistent improvement to her reading. Awesome Effort Larri!



Worth your Weight in Opal

Jacob McGovern S2H

Jacob was nominated by Mrs Cross for being a responsible and respectful leader to teach other students Aboriginal dance. Keep up the great work Jacob!



Worth your Weight in opal

Mia Kotru S23N

Mia was nominated by Miss Richardson for always giving her best efforts in class. Well done Mia!

Primary PBL Gold Reward



In the last week of term every child who had reached their gold award or who had no negative incidents were treated to a movie and popcorn on the big screen in the gym. They got to watch the new Minion's movie which appeared to be a big hit across all ages.

Thank you to all our amazing students who consistently follow our school Turtle Goals.

Primary PBL Thermometer Reward

At the end of last term all primary students celebrated filling the thermometer with turtle tickets by decorating a cupcake each. A big Thankyou to Mr Rogers and the cooking club who made enough cupcakes for all primary students and catering to students with allergies. As you can tell by the photos this reward was enjoyed by ALL.

Students have nearly filled the thermometer again. I wonder what the next reward will be??



If you need to get a message to your child please contact the school office by 2:30pm.

Secondary Studies



Mrs Currey populated our aquaponics tank with a batch of 50 silver perch. The aquaponics system is already producing fresh vegetables such as lettuce and buk choy, with plans to expand this through the work of our Friday afternoon STEM club. A number of students are working hard to make the aquaponics a success, among them Skye Noyes, Riley Schellnegger and Chanel Kenny. Chanel gave up her time during the holidays to check up on the welfare of the goldfish in the tank, each day checking the water quality, providing food and cleaning the filters.

Check your LOST PROPERTY



Our Lost Property tub is over flowing.
Please feel free to come and check for
your child's belongings

Yuwaalaraay is the dialect of the Lightning Ridge area. The name of the language and Aboriginal people of the Balonne River Region.

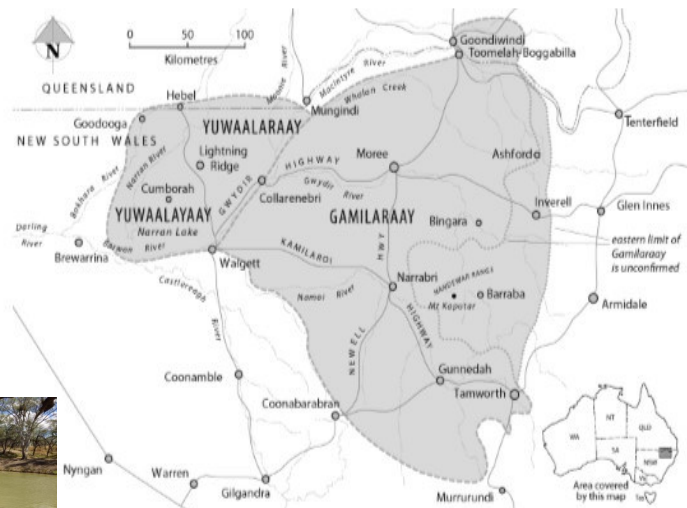
Yuwaalaraay

Word of the Week

Wuguwa + flood

Narran nhama dhurra-laa-nha, **wuguwa** yuruun-da.

The Narrna is rising, **floodwater** on the road.



Year 12 Graduation Assembly

Lightning Ridge Central School farewelled our Year 12 students last term. The morning celebrated twelve successful years of education for the students, and was an important milestone that acknowledged a new chapter in their lives. It was a very special morning and the staff, families and friends were all united in their support of our graduates. Mr Finter suggested to the students that they should remember the various stages of their school days, which helped them develop into who they are today. Celebrate your future successes, whatever form it may arrive in, take opportunities in life and try to make a positive difference in the world! Congratulations class of 2022!



Continued



Secondary MC

The secondary MC has been working hard and developing their cooking skills in the kitchen. They have been learning how to cook using all sorts of equipment and trying new and exciting ingredients!





Primary PBL Awards



PRIDE AWARD

PRESENTED FOR SHOWING PRIDE BY
CONSISTENTLY DOING QUALITY WORK!



RESPONSIBILITY AWARD

PRESENTED FOR MAKING RESPONSIBLE CHOICES
WITH THEIR LEARNING AND BEHAVIOUR!



RESPECT AWARD

PRESENTED FOR CONTINUALLY SHOWING
RESPECT AND
FOLLOWING
INSTRUCTIONS!



WEDNESDAYS

7:30am

Senior Cola

Stages 3-6 Welcome



 **Little Athletics**
NSW

Little Athletics is coming to Lightning Ridge in 2023!

Like/ follow Lightning Ridge Little Athletics
Facebook page for important announcements

Stage 2 Dubbo Zoo Excursion

Tues 15th Nov - Wed 16th Nov



Payment due by 27th Oct

Students will need to bring a
sleeping bag/Linen + Pillow



Every Day COUNTS

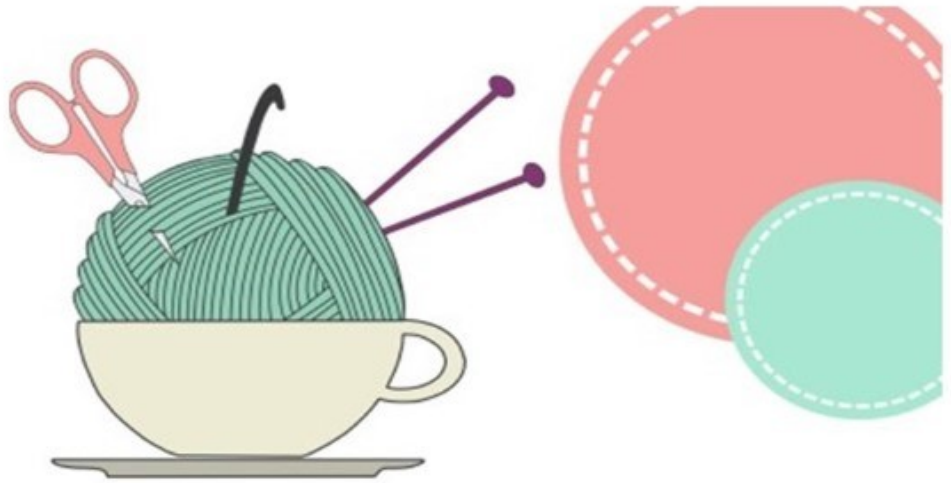
ATTEND TODAY
ACHIEVE TOMORROW



Is your child in year 6 this year??

Your child may be eligible to apply for a \$1000 scholarship from the Walgett RSL. Parents must collect an application form from the school office.

Applications close Friday 28th October 2022



Parents, Carers and Community Members

Join us for

A Crafty Sip and Stitch

The Students at Lightning Ridge Central School are polishing off their dance moves for their annual school performance and we need your help to create their costumes and make the night a success!

You don't need any sewing/ crafting ability, just come along and enjoy an afternoon of fun!

Term 4 Sip & Stitch Dates

11th October
18th October
25th October
1st November
8th November
15th November
22nd November
29th November



Materials and equipment will be provided



Free refreshments and nibbles available

All Welcome

Lightning Ridge Central School
Kaolin Street, Lightning Ridge

Tuesdays 3:30pm - 6pm

We have over 200 costumes, backdrops and props to make
any help is greatly appreciated

Lightning Ridge Central School

Enrolments for Kindergarten 2023 are now open.

Sign up for **Kindy Start** to help with transition to school.

Kindy Start will run on Fridays beginning on **November 18th 2022.**

More information is available at the school office. Please contact Mrs Mary Cross at the school with any questions.





Information for applicants

For entry to selective high schools in Year 7 in 2024

Ready to apply?

Apply online at:

shsoc.education.nsw.gov.au

Note: there may be changes to the dates and procedures in this document.

For the latest updates visit:

education.nsw.gov.au/shs-oc

Key Dates

Application website opens

18 October 2022

Application website closes

16 November 2022

Test centre and test authority advice released

20 April 2023

Selective High School Placement Test


4 May 2023

Illness/misadventure requests submitted

11 May 2023

Placement outcome expected to be released

Mid-August 2023



Come If you dare...

Halloween

HAUNTED HOUSE

NEW SPOOKY LOCATION @



AMIGO'S CASTLE

THANK YOU TO OUR SPONSORS

BUSY BEE CAFÉ

MR CHEAP TRUE VALUE

JENNIFER FROM AMIGO'S

6 - 8:30PM Monday, October 31st

MR CHEAP

TRUE VALUE



OUTBACK THERAPY PARENT SESSION



**MONDAY 31ST OCTOBER
4:30PM @ LITTLE DIGGERS**



INCLUSION PROJECT

Little Diggers and Outback Therapy have been approved to provide a Capacity Building Project supporting Inclusion to the Lightning Ridge Community



THERAPISTS

Bethany Eden is a Speech Pathologist and Holly Gawthorne is an Occupational Therapist who are both based in Lightning Ridge.

COME GROW WITH US!

Professional Development for Little Diggers Educators and an opportunity for Families and Community to learn about Speech Therapy and Occupational Therapy and how they may benefit your children and family.



Gravel Ridge Collective
ART - PHOTOGRAPHY - CREATIVE

THE Hungry Spirit
yuulingin dhuhi

Pop & Paint Date

23rd October - 10:30am

Hungry Spirit - Lightning Ridge

Seat Bookings
\$55 per person

BYO
Drinks & Nibbles

- No Painting or Creative experience is needed
- All materials are supplied- Apron, Easel, Paints, Brushes & Canvas
- Everyone Welcome - Book for a group of friends or individuals, great way to meet new people
- BYO Happy smiles, laughs & friends
- Takeaway - A beautiful masterpiece & a wonderful experience enjoyed!
- Be Guided by Tina or Paint ahead
- Relax, Create & Enjoy!!



MUST HAVE A BOOKING WITH
TINA TO ATTEND PAINTING DATE!

BOOKINGS - REPLY TO POST OR
DM GRAVEL RIDGE COLLECTIVE
RSVP 14TH OCTOBER

WALGETT

TWILIGHT MARKETS

SAVE THE DATE

26TH NOVEMBER 2022
4 - 8 PM

STALLS ARE FREE - BOOK NOW!

CALL 02 6828 6100 OR EMAIL
JDUNCAN@WALGETT.NSW.GOV.AU



Lightning Ridge Central School

P&C Uniform Shop Order Form

WHOLE SCHOOL ITEMS	PRICE	SIZE	QUANTITY	TOTAL
Caps – Black	\$7.00			
Hats – Bucket	\$5.00			
Hats – Red wide brim	\$7.00			
Library Bags	\$7.00			
Black Jackets (limited stock and sizes)	\$20.00			
Sports Shirts – House colours	\$7.00			
PRIMARY K-6	PRICE	SIZE	QUANTITY	TOTAL
Shirts K-4 – Red	\$20.00			
Shirts Years 5 & 6 – Red/ White/ Black	\$25.00			
Shorts – Black	\$15.00			
Skorts – Black	\$15.00			
Sloppy Joe – Red (limited stock and sizes)	\$20.00			
Hoodie – Red	\$30.00			
Trackpants – Black Microfibre	\$25.00			
Trackpants – Black Fleecy	\$20.00			
SECONDARY 7-12	PRICE	SIZE	QUANTITY	TOTAL
Shirts Years 7 – 9 Red/ White/ Black	\$25.00			
Shirts Year 10 – 12 White	\$20.00			
Shorts – Black	\$15.00			
Skorts – Black	\$15.00			
Jacket – Red (limited stock and sizes)	\$35.00			
Hoodie – Black	\$30.00			
Canterbury Jersey	\$65.00			
Trackpants – Black Microfibre	\$25.00			
Trackpants – Black Fleecy	\$20.00			
			TOTAL:	

CONTACT DETAILS:

Name:.....

Contact Number:

Sport house (if required):

Please indicate:

☐

Cash included

☐

Pay (with cash) on pickup from the office

LRCS - CANTEEN MENU - 2022

Snacks - (Recess & Lunch)		Sandwiches		Hot Foods	
Crunch cups (cheese, carrot, celery & cucumber) w/ Aioli sauce		(Gluten free bread available)		Village sausage roll	\$3.80
	\$3.20	Cheese	\$3.20	Travellers beef pie	\$4.00
Yoplait yoghurt 175gm	\$2.50	Cheese salad	\$4.20	Party pies village 60gm	\$1.30
Grain waves (sour crème)	\$1.20	Cheese & tomato	\$3.60	Sweet chilli chicken tenders	\$1.60
Cheese sticks	\$1.00	Ham, cheese & tomato	\$4.20	Chicken & gravy roll	\$5.50
Lite muffins 75gm (chocolate)	\$2.20	Ham or chicken salad	\$4.50	Garlic bread (Good Tucker 75gm)	\$1.50
Koala popcorn (plain, sweet & salty or butterscotch)	\$1.50	Ham or chicken	\$3.60	UFO ½ roll	\$2.00
Fresh fruit (banana, apple, mandarins)	\$1.00- \$1.50	Chicken chilli tender, lettuce & mayo	\$4.50	Cheese & tomato sauce	\$2.00
Fruit salad cups	\$1.50	Ham & cheese	\$4.00	Chicken strips per bag (6)	\$3.20
Red rock deli chips (honey soy or sea salt)	\$1.20	Chicken, lettuce & mayo	\$4.20	McCains pizza (Ham/pineapple or ham/cheese)	\$3.00
		Egg, lettuce & mayo	\$4.00	Beefburger (lettuce, tomato, cheese & beetroot)	\$6.00
		Vegemite	\$2.80	Chicken burger (lettuce, tomato & mayo)	\$6.00
		Wraps (Whole Grain)		Chicken strips (each)	\$0.70
		Salad wraps	\$6.50	Beef or chicken noodles	\$2.00
		Chicken or ham salad	\$7.00	Hot Dogs (w/ sauce: tomato, bbq, mustard)	\$4.00
		Chicken, lettuce & mayo	\$6.00	w/ cheese	\$0.50
		Chilli tender, lettuce & mayo	\$6.50		
		Small Salad Bowls		Toasted Sandwiches (Via order)	
		Ham & Cheese	\$5.50	Cheese & ham	\$4.00
		Sweet chilli tenders	\$5.50	Ham, cheese & tomato	\$4.20
		Egg & Cheese	\$5.50	Cheese	\$3.20
		Chicken	\$5.50	Chicken & cheese	\$4.20
		Salad	\$5.50		
		(All salads come with lettuce, tomato, carrot, cucumber, beetroot, onion, pineapple & mayo)		Miscellaneous	
		Optional Extras for Salad Bowls		Tomato or BBQ sauce	\$0.30
		Also available mayonnaise, Aioli sauce or French/Italian dressing.		Bundle of lunch bags	\$2.50
		Ice-creams - (Lunch only)			
		Ice-cream cups	\$1.20	CANTEEN CLOSING AT 9:00AM FOR ORDERS!	
		w/ mini milo packets	\$0.30	NO EXCEPTIONS!	
		Ka blueys (blue/s/watermelon & lemon)	\$0.60		
		Paddle Pops (Choc & Rainbow)	\$2.00		



**PLEASE PUT RECESS AND LUNCH ORDERS
ON SEPARATE BAGS, AND DON'T FORGET
NAME AND CLASS.**