

# LIGHTNING RIDGE CENTRAL SCHOOL



**Principal:**  
**Primary Deputy Principal:**  
**Secondary Deputy Principal:**

**Mr Richard Finter**  
**Ms Jane Taylor**  
**Mrs Margaret Morriss**

PO Box 294, Kaolin Street  
Lightning Ridge NSW 2834  
T 02 68290511 F 02 68290137  
E [lightningr-c.school@det.nsw.edu.au](mailto:lightningr-c.school@det.nsw.edu.au)

Term 2, Week 4 2021



## Relieving Principal's Report

During the week our Principal Mr Finter was able to return to Lightning Ridge Central School for a brief visit. During this time he visited our classrooms and was involved in some curriculum planning in secondary for 2022. It was wonderful to have Mr Finter back even for a few days, he is hoping to return later in the Term.

One of the great forums for parents and carers to support their own child and the whole school community is to become an active participant in the P&C and the AECG. Both these community organisations do a fantastic job of supporting the school through fundraising and offering a perspective on the school's strategic directions. Recently the P&C held a working bee at school to transform some gardens around the school. There will be another working bee held on the 30th May, if you are available it would be fantastic if you could lend a hand, many hands make light work!

NAPLAN will be held during Week 4 for students in Years 3,5,7 & 9. The tests provide parents and schools with an understanding of how individual students are performing at the time of the tests. All students are encouraged to sit NAPLAN and apply their best efforts. It is important to note that NAPLAN is just one aspect of our school's assessment.

During Week 3 Primary staff held Personalised Learning Pathways (PLP's) meetings with parents and carers. A large number of parents and carers attended these valuable meetings which assist the classroom teachers to connect with our families. The PLP's assist in monitoring students success, attendance, literacy and numeracy skills. These pathways build and support a culture of high expectations and improved educational outcomes. Thankyou to all those parents and carers who attended and a special thankyou to our staff for organising these valuable meetings. Secondary staff are currently working towards developing PLP's towards the end of Term 2.



**National Walk Safely to  
School Day**  
Fri 14th May

**Variety Bash Visit**  
Wed 19th May

**Mufti Day for  
Cystic Fibrosis**  
Thurs 20th May

**Term 2 Pupil Free Days**  
Fri 21st - Mon 24th May

**Steve 'Bear' Hall Gala day**  
Fri 28th May

**Primary North West Cross  
Country**  
Thurs 10th June

**Narran Lakes Open Day**  
Fri 11th June

**Public Holiday**  
Mon 14th June

**Year 3-6 Primary Athletics  
Carnival**  
Wed 16th June

**Secondary Athletics  
Carnival**  
Thur 17th June

**Infants Athletics Carnival**  
Fri 18th June

2021 School Newsletter now available online via our Skoolbag App and website on [www.lightningr-c.schools.nsw.edu.au](http://www.lightningr-c.schools.nsw.edu.au)





## Secondary Deputy Principal's Report

On a daily basis, students at LRCS impress their peers, staff and the community with the amazing things they do and the last two weeks have been no different. Miss Martinez and Kelly Morriss have worked diligently to create displays of our student's artworks to be judged at the Walgett Show this weekend. The artwork included some amazing major works from our former Year 12 students and paintings and drawings from other students all the way down to Kindergarten. Both the primary and secondary artwork displays are absolutely fantastic and I think we can expect some ribbons to come our way this weekend. We wish good luck to all of our talented students.

Speaking of talent, from art to sport, our students continue to impress. Recently, Miss Messner organised a CHS netball game with our cross-town rivals Wee Waa. Students and staff came from all over the school to cheer our Under 16 Girls on. Wee Waa were a formidable team, who have quite obviously trained and played together for a long time, and they took home the chocolates this time. However, our players did LRCS proud. They fought for every ball, sprinted every metre and left everything they had on the court. With continued training from Miss Messner, they can only get better and better, and we look forward to their next game on home soil. Well done girls!!

Not only are our students talented but they also have outstanding leadership qualities. This was displayed on Wednesday morning at the SRC/House Captains morning tea. Mr Finter, Mrs Morriss and I were all invited to attend, as our new leaders received their badges. A number of parents and staff were also in attendance and it was refreshing to see the pride and enthusiasm in our students as they readied themselves for such an important role in our school. Our House Captains lead our house groups at major events such as the Swimming Carnival and Athletics Carnival. They are tasked with organising relay teams, leading war-cries and encouraging their team mates to participate. We expect them to continue their fine leadership throughout the year. Our SRC members meet frequently to discuss issues in the school community and they provide a much needed student voice on important matters. We believe they will do a great job and wish them luck for the rest of the year.

We have an eventful few weeks ahead with NAPLAN, Stage 4 and 5 examinations and a number of assessments due. We encourage all secondary students to organise a rigorous home study schedule in the lead up to these important events. Students are also encouraged to seek support from their classroom teachers in areas of need. The better we are prepared, the better chance we have at success. Again, this all begins with being at school, on time, at 8:40. Good luck to all of our students over the next few weeks. All we ask is that you prepare yourself well and attempt every assessment or examination to the absolute best of your ability.



### Positive Behaviour for Learning

Lightning Ridge Central School share a Positive Behaviour for Learning focus with our Students each fortnight. Students who show exceptional PBL values are rewarded throughout the year with excursions, special activities and treats.



**This fortnights PBL Focus is**

**Hands and Feet to self**



*This symbol represents emu tracks because emu's have no arms, and in conflict they have to either use their heads or move away, or both.*

Students are reminded that they must keep their hands and feet to themselves at all times.

This includes showing respect for others by asking if you can use their pens and pencils.

**Primary Students should arrive at school by 8:55am**

**Secondary Students should arrive at school by 8:40am**

**LATE IS NOT GREAT**



## Worth your Weight in Opal

### Lucas Kent ES1P

Lucas was nominated by Mrs Cross for learning to identify numbers 1-10. Well done, Lucas!



## Worth your Weight in Opal

### Amy Charty S20

Amy was nominated by Mrs Caley for being an enthusiastic responder in question/answer lessons.

Thank you Amy for all your contributions.



## Worth your Weight in Opal

### Taniqua Wallace S3C

Taniqua was nominated by Mr Bonsing for being a settled class member and staying on task. Well Done Taniqua!



## Worth your Weight in Opal

### Levi McCabe Yr 7

Levi was nominated by Mrs Morriss for helping at the P&C working bee and volunteering his Saturday to work and help beautify our school. Awesome Job Levi!

Yuwaalaraay is the dialect for the Lightning Ridge area. The name of the language and Aboriginal people of the Balonne River Region.

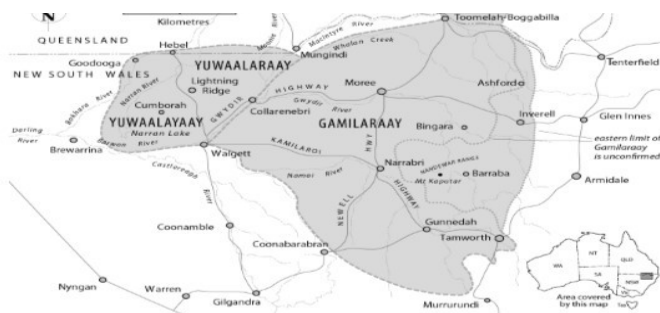
#### Yuwaalaraay

#### Word of the Week

Here's something a teacher likes to hear:

Waan ngay nagarrila! =

Look at my work!





## Congratulations Rhonda

Rhonda was awarded her 20 years of Service to Lightning Ridge Central School this week. Thank you for dedicating your 20 amazing years of work to our school

Rhonda is an extremely valued member of staff.

## Stage 1

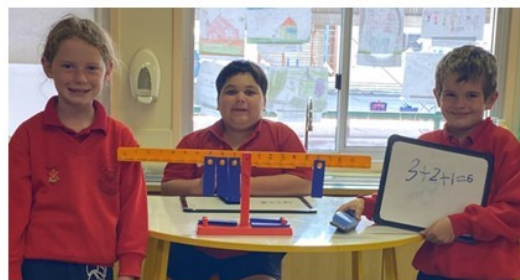
May the 4th be with you!

Calendar Maths with S1Y is where we explore days of the week, months of the year, ordinal numbers, the weather, whose birthday it is and then express that date as tally marks, dots, written numerals, MAB blocks and on a number line. Just for the record, Luke's birthday is on the 4th of May. May the force be with you, Luke!

We live in a world full of numbers. As adults, we can understand and manipulate this underlying realm. These little, tiny humans, that sit before me, will carry that torch long after I am gone. But for now, some of us are still learning that skip counting is actually going to become multiplication. What a joy! Math is fun. Maybe the 'force' really is math, giving the expression, 'Luke, use the force,' an entirely new and appropriate meaning.

We have all kinds of educational tools at our disposal from MAB blocks, ten frames and this you-beaut balance beam that will tell you what numbers add to 4 on this 4th of May. That one is kind of easy, but we can also work with much larger numbers. Maybe some of the high schoolers could work out just exactly how high a number we could use on this contraption. It really is quite a special tool and I have to turn to my random paddle pop sticks to select the lucky participant for the day.

Here we are two days later with Pearl showing us that  $3+2+1=6$ . You see, it's now the 6th. How time flies when you're having fun. S1Y out!



Students in S1B have been enjoying themselves in Science doing the unit 'Materials are used for a purpose'. Students have been making predictions, mixing ingredients and then analysing the results. The students created playdough by mixing and then kneading the ingredients together. Students have also been watching footage on how meringue, concrete and glass are created.

---

## Stage 1

In S1D this week, we have been exploring patterns and shapes. Students used the pattern blocks to create their own designs and characters. The plasticine and match sticks were great for constructing 3D shapes. These activities have been a wonderful way for students to discover the properties of 2 and 3D shapes. they will now attempt to draw their creations in the following lessons.



---

## Agriculture

Last week our Stage 5 Agriculture class participated in chook washing. This was to carry out routine health care and pest management, and to prepare the chooks for entry in the Walgett show.



---

## Primary Industries

On Friday 30th April, Year 12 Primary Industries students were involved in cattle work at Narrandool station, owned by Kate and Michael Treweek. The class was completing assessment work for their unit on Healthy Livestock.

Thankyou Mrs Currey and our local property owners Kate and Michael Treweek, for allowing our students to experience these wonderful opportunities!



# Food Technology

The fabulous Year 9 food technology class recently completed their assessment task. Their mission was to design a healthy wrap using the Australian Guidelines for Healthy Eating. Students went to Khans to purchase their chosen ingredients. Their wrap was then produced in the kitchen the following day. Students had the option to flat grill and heat their wraps or serve a la naturelle. Well done everyone!



## MasterChef comes to Lightning Ridge

Ms Muller recently held a Master Chef challenge for Stage 6 Food Technology students, though some lucky Stage 5 students got to join in too.

The students' challenge was to create a meal in one hour. The meal had to contain protein and vegetables from a hidden range of products, be prepared to restaurant standards, and served to a panel of esteemed judges.

All the contestants did an amazing job!

Thank you. Ms Muller for all the energy you put into preparing this event.



## Secondary MC

Our MC students have been busily working on the creation of hat and coat racks with Mr Pickard. The racks use both recycled timber and nails recycled from the jetty at Bourke (Mr Pickard is extremely good at re-using things!).



## Staff Professional Development and Cultural Awareness Day

On Monday, 19 April, all school staff engaged in a day of professional development and cultural awareness. The day was spent at Angledool Station, where staff new and old learnt about the river systems of the area, and the cultural and environmental significance to Aboriginal and non-people. From there we went to the long-abandoned Angledool Mission. Our guides for the day, Garruu Jason Wilson and Walgan Brenda McBride, described the history of the mission and its impact on people's lives. Later, staff returned to school to continue preparations for an exciting Term 2.

The school thanks and acknowledges the support of Joan and Rory Treweeke, of Angledool Station; Brenda McBride of the AECG; Jason Wilson of Department of Environment; and the drivers of NRC Buses Pty Ltd.

The feedback we've received from staff is overwhelmingly positive, and will help us in embedding cultural knowledge into our daily teaching practice.

Pictured to the right are staff being led on a tour of Angledool Mission by Jason Wilson.



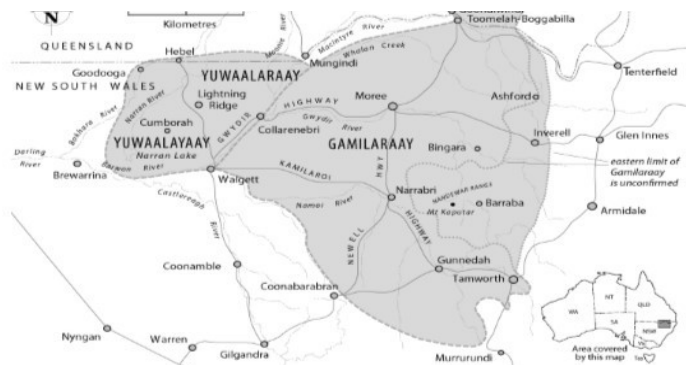
Yuwaalaraay is the dialect for the Lightning Ridge area. The name of the language and Aboriginal people of the Balonne River Region.

### **Yuwaalaraay** **Word of the Week**

Here's something a teacher  
likes to hear:

Waan ngay nagarrila! =

Look at my work!



---

## Student Representative Council



The leadership team at Lightning Ridge Central School welcomed parents, grandparents, and carers to a morning tea on Wednesday the 5th of May, where Primary SRC leaders and house captains were presented with their leadership badges.

---

---

**V  
O  
L  
U  
N  
T  
E  
E  
R  
S  
  
N  
E  
E  
D  
E  
D**



***Calling ALL Dads, Mums, Nans, Pops, Aunties,  
Uncles, Cousins.... Anyone!  
Everyone!!***

**Lightning Ridge Central School needs your help!**

The Variety Bash is coming to town and have kindly donated over \$6,000 in funding towards our school, but we urgently need your help to get the funding!

*Here's where you come in...* To secure the funding the School will be hosting breakfast for the bash car drivers on Wednesday 19th May between 7am & 9am in the school gym. We need your help to prepare/ serve the breakfast for 330 bash car guests. Any help you could give would be greatly appreciated!

*Please call the office on 68 290 511 if you can help!*

---



**Lightning Ridge Central School**

## **Working Bee**

Sunday 30th May

9am - 12 noon

Join us for a working bee at the school Sunday!

Everyone welcome!

Free sausage sizzle & refreshments



Bring a shovel or a pitch fork and join in the fun!



**MUFTI DAY**

**FOR CYSTIC FIBROSIS**

**THURSDAY 20TH MAY 2021**

WEAR CASUAL CLOTHES TO SCHOOL AND BRING A GOLD COIN DONATION, TO RAISE AWARENESS AND FUNDS FOR CYSTIC FIBROSIS

**CYSTIC FIBROSIS Australia**

You are cordially invited to  
**GOODOOGA-LIGHTNING RIDGE CWA**  
**35th ANNUAL WOOL DAY**  
**Saturday 5th June 2021**

To be held at  
**BRIAN & KAY GIBBONS "MOONGULLA" COLLARENEBRI**

**Featuring**  
 Fashion Parade by Iris&Wool [www.irisandwool.com](http://www.irisandwool.com)  
 Junior Colouring Competition | Sleepy Merino Pyjamas  
 Variety of Stalls and much more!

**Time of events**  
 10:30am  
 Viewing of wool in the Moongulla Woolshed  
 11:00am  
 Presentation of trophies in the Moongulla Woolshed

**Major Sponsor**  
**Elders Walgett**

12.30pm  
 Lunch at  
 Moongulla Homestead

**Relish CATERING**  
**Luncheon \$20**  
 children under 10 free

Generously subsidised by  
**Lightning Ridge Rotary**

**BYO Esky of Drinks, Chair & Shade**

**RSVP by 21st May essential for catering**  
**CARMEL RITTER**  
 P 0267 562 434 E [carmel.anderson@bigpond.com](mailto:carmel.anderson@bigpond.com)  
**SUE SCOLES**  
 P 0428 511 102 E [scolesrugby@bigpond.com](mailto:scolesrugby@bigpond.com)

Proceeds to CWA Charities: Cancer Council, Flying Doctors, Medical Research and Local Community Groups

**NARRAN LAKE NATURE RESERVE OPEN DAY**  
**11-12 JUNE 2021**  
*Science Theme*

Entrance 1km north of Narran Lake Road/Kurrajong Road junction.

**Science theme to include:**  
 Sample vegetation surveys  
 Bird surveys, Wetland ecology  
 and more.....

**EVENTS INCLUDE**  
 Guided cultural walks , interpretation, stories and experiences  
 Indigenous craft displays and demonstrations including toolmaking and weaving  
 Displays and presentations  
 School song and dance  
 Bush tucker and barbeque  
 Water and birdlife !

For more information and to confirm your attendance for catering purposes please call the NPWS Narrabri Office Ph 02 6792 7300

An event coordinated by NPWS and NLNR Joint Management Committee

Photo Peter Berney

# Laptop Payments Now Due

T321 Laptop Lease payments are due by

**Friday 4th June, 2021.**

Laptop payments are due week 7 of every term. Any laptops with outstanding payments after this date will be collected and stored at the School until payment is made.

*Payments can be made online via Skoolbag or Lightning Ridge Central School's web site by clicking "make a payment" and following the prompts by using your credit/debit card.*

*Alternatively, you can pay cash, cheque or Eftpos at the School Office.*



# Uniform Shop

Uniform Shop is open Mondays and Thursdays only.

8:30am - 9am

No EFTPOS available (Cash Only)

*Order forms and pricelists are also available at the School's Office*

Year groups	Summer Uniform	Winter Uniform
K-4	<ul style="list-style-type: none"> <li>Black shorts</li> <li>Black shorts (girls only)</li> <li>Red polo shirt with school emblem</li> </ul>	<ul style="list-style-type: none"> <li>Black track pants</li> <li>Red polo shirt with school emblem</li> <li>Red sloppy-joe</li> </ul>
5-9	<ul style="list-style-type: none"> <li>Black shorts or black full length pants</li> <li>Black shorts (girls only)</li> <li>Red/Black/White polo shirt with school emblem</li> </ul>	<ul style="list-style-type: none"> <li>Black shorts or black full length pants</li> <li>Black shorts (girls only)</li> <li>Red/Black/White polo shirt with school emblem</li> <li>Black jumper - 5-8</li> <li>Black jacket</li> <li>Canterbury jersey - yrs only</li> </ul>
10-12	<ul style="list-style-type: none"> <li>Black shorts or black full length pants</li> <li>White polo shirt with school emblem</li> </ul>	<ul style="list-style-type: none"> <li>Black shorts or black full length pants</li> <li>White polo shirt with school emblem</li> <li>Black jacket</li> <li>Canterbury jersey</li> </ul>



**HEAL COUNTRY!**

ENTRIES FOR THE

**LIGHTNING RIDGE CENTRAL SCHOOL NAIDOC WEEK**

**POSTER COMPETITION NOW OPEN!**

**ENTRIES MUST BE A3 SIZE AND ARE DUE ON THE 4TH OF JUNE**



**FOR 2021 THERE ARE SECTIONS FOR ALL STAGES INCLUDING A COMMUNITY SECTION**

**PRIZES**

**Design a poster showing, "Heal Country, heal our nation"**



Families are welcome to make all student payments including excursions, laptop lease fees and elective fees via EFTPOS now.

(P&C uniform shop remains cash only)



Our Children  
Our Communities  
Our Future

On the 8/9th June 2021, Kindergarten teachers and our AEO staff will be participating in the Australian Early Development Census about your child's first year of schooling. The AEDC data collection is relied upon by schools, early childhood organisations, researchers and government to inform planning and improve services and supports for children and families.

Teachers and AEO staff will answer questions relating to the five key domains of early childhood development including; Physical health and wellbeing, Emotional maturity, Social competence, Language and cognitive skills (school-based) and Communication skills and general knowledge.

You can see all the questions at <https://www.aedc.gov.au/avedi>

Information notes have been sent home with students and families only need to reply if you do not wish your child to participate. Contact Megan Loiterton at the school if you need any further information.



Save the Date

**K-6 Red, Black and Yellow Parade on  
Wednesday, 23rd June 2021**

To celebrate NAIDOC Week, students in K-6 are encouraged to come to school dressed in Red, Black and Yellow clothes on Wednesday, 23rd June 2021. Students with their Stage, e.g. Early Stage 1, will have an opportunity to parade around in front of the rest of Primary and there will be a prize for the Best Dressed in the stage.

Parents/carers are welcomed to come along to our Red, Black and Yellow Parade. It will be held under the Primary COLA at 10am.

If you have any questions regarding this, please don't hesitate to contact Miss Deer.

We're looking forward to seeing as many of you as possible at our parade!!



**Monday's  
7:30am  
Senior Cola  
Stages 3-6 Welcome**

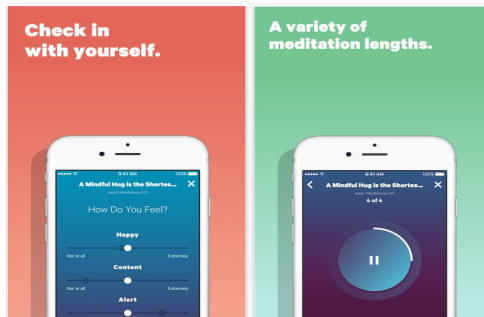
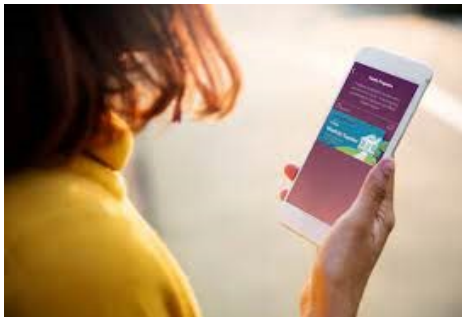




Smiling Mind is an Australian not-for-profit that aims to help every mind thrive! They offer a range of programs and an award-winning app that introduces mindfulness to kids, young people and adults in an easy, accessible way.

They're working on a NEW app specifically for Australian students aged between 10 and 12, designed to help kids develop a toolkit of strategies that support positive mental health. They're looking for young people to give feedback on early ideas, and to share their thoughts and experiences. The activities are fun and engaging, and can be completed anywhere in Australia at a time that suits families.

Parents, carers or teachers can sign up their kids to get involved at [tinyurl.com/SmilingMindEOI](https://tinyurl.com/SmilingMindEOI). It's completely free to get involved, and a great opportunity to contribute to the development of this exciting new project. If you have questions, get in touch with the team at Smiling Mind on [projects@smilingmind.com.au](mailto:projects@smilingmind.com.au).



## Lightning Ridge Arts & Crafts Inc.

We are a community artspace and gallery for local Artists, Makers and Crafters. We hold workshops in Silversmithing, Polymer Clay, Painting and Drawing.



**Mondays Yarnies**

**New members & visitors  
welcome!**

**51a Pandora Street**

**Open 10am-2pm most days**

## ORAL HEALTH THERAPISTS (CHILDREN'S)

**APPOINTMENTS  
AVAILABLE**

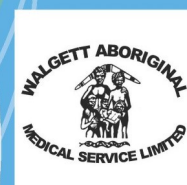
**22 - 24 MARCH**

**26 - 28 APRIL**

**24 - 26 MAY**

**28 - 30 JUNE**

**CALL WAMS  
6820 3736**





LAST SATURDAY OF THE MONTH  
MARCH - SEPTEMBER 2021

# TASTE OF THE WORLD

## food markets

**LIGHTNING RIDGE NSW**

**Last Saturday of the Month (Mar-Sept)**  
**6pm -8pm**

**Wooloroo Road**

**THE Hungry Spirit**  
yuulngin dhuwi



## LRCS- CANTEEN MENU- TERM 2, 2021



### Snacks - (Recess & Lunch)

Crunch cups (cheese, carrot, celery, tomato & cucumber)	\$3.00
Yoplait yoghurt 175gm (vanilla)	\$2.50
Grain waves (sour crème)	\$1.20
Cheese sticks	\$1.00
Lite muffins 75gm (chocolate)	\$2.00
Koala popcorn (plain)	\$1.50
Fresh fruit (banana, apple, orange)	\$1.00- \$1.50
Fruit salad cups	\$1.50

### Drinks

Spring water 600ml	\$2.00
Spring Water 1.5ltr	\$3.00
Juice bombs (grape, blackcurrent, apple/ raspberry, watermelon, orange/ passio, lemonade)	\$2.20
Just Juice poppers 200ml (apple, orange, apple/ blackcurrent)	\$2.00
Classic 300ml milk (chocolate, strawberry)	\$2.90
Big M milk 250ml ctn (chocolate, strawberry)	\$2.00
Nippys reduced fat 375ml (chocolate, strawberry, iced coffee, honeycomb) (High School Only)	\$2.80
Plain ctn milk 300ml	\$2.20

### Ice-creams - (Lunch only)

Quelch 99% juice tubes (apple, tropical)	\$0.60
Frozen poppers just juice	\$2.00
Bulla dixie cup (vanilla)	\$1.20
Ka blueys (blue/red/lemon)	\$0.60
Frozen twisted yogurts (mango, blueberry, vanilla, watermelon, strawberry)	\$2.20

### Sandwiches

<b>(Gluten free bread available)</b>	
<b>(Multigrain rolls extra \$1.00)</b>	
Cheese	\$3.20
Cheese salad	\$4.20
Cheese & tomato	\$3.60
Ham, cheese & tomato	\$4.00
Ham or chicken salad	\$4.50
Ham or chicken	\$3.50
Chicken chilli tender, lettuce & mayo	\$4.50
Ham & cheese	\$3.80
Chicken, lettuce & mayo	\$4.00
Chicken, avocado & mayo	\$4.50
Egg, lettuce & mayo	\$4.00
Tuna, lettuce & mayo	\$4.00
Vegemite	\$2.80

### Wraps (Whole Grain)

Salad wraps	\$6.00
Chicken or ham salad	\$6.50
Chicken, lettuce & mayo	\$5.50
Chilli tender, lettuce, tomato,	\$6.50
Tuna, lettuce & mayo	\$5.50
Tuna salad	\$6.50



### Small Salad Bowls

Salad	\$5.00
Chicken or ham/egg or tuna	\$5.50

### Optional Extras (for Salad Boxes)

Onion, avocado, pineapple - please indicate on order. Also available mayonnaise or french dressing.

### Hot Foods

Mrs Mac lite sausage roll	\$3.50
Travellers beef pie	\$3.80
Party pies village 60gm	\$1.20
Chicken & gravy roll	\$5.50
Garlic bread (Good Tucker 75gm)	\$1.30
UFO ½ roll	\$2.00
Cheese & tomato sauce	\$3.00
Chicken strips per bag (6)	\$3.00
McCains pizza (Ham/pineapple or ham/ cheese)	\$3.00
Beefburger (lettuce, tomato, cheese & beetroot)	\$5.00
Chicken burger (lettuce, tomato & mayo)	\$5.00
Chicken strips (each)	\$0.60
Beef or chicken noodles	\$2.00



### Toasted Sandwiches (Via order)

(please order during summer months)

Cheese & ham	\$3.80
Ham, cheese & tomato	\$4.00
Cheese	\$3.20
Cheese & tomato	\$3.60
Chicken, avocado & cheese	\$4.50
Chicken & cheese	\$4.00
Chilli tender & cheese roll	\$5.50

### Miscellaneous

Tomato or BBQ sauce	\$0.30
Bundle of lunch bags	\$2.50

**PLEASE PUT RECESS AND  
LUNCH ORDERS ON  
SEPARATE BAGS, NAME &  
CLASS. THANK YOU**

**ALL PROFITS GO TO  
THE P&C FOR THE  
STUDENTS!**

**CANTEEN CLOSING AT  
9.00AM FOR ORDERS!  
NO EXEMPTIONS!**