

LIGHTNING RIDGE CENTRAL SCHOOL



Principal: Mr Richard Finter
Primary Deputy Principal: Ms Jane Taylor
Secondary Deputy Principal: Mrs Margaret Morriss

PO Box 294, Kaolin Street
Lightning Ridge NSW 2834
T 02 68290511 F 02 68290137
E lightningr-c.school@det.nsw.edu.au

Term 1, Week 6 2021



Principal's Report

Lightning Ridge is a PBL school, that is, a Positive Behaviour for Learning School. PBL is an evidenced based problem solving framework. This framework supports the development of a planned whole school approach to wellbeing and a school culture strongly focused on learning. It is designed to address inappropriate behaviour and acknowledge positive behaviour.

LRCS has been a PBL school for a number of years. We have a PBL team that meets every fortnight to examine and analyse data pertaining to student behaviour. For example if our data base shows that some students are not following instructions, we as staff work with students to focus on the importance of following instructions both at school and in other contexts like the workplace and on the sporting field.

PBL at LRCS is based on three values;

Respect

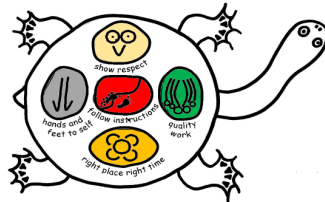
Responsibility

Pride

These values are explicitly taught and students are expected to exhibit them but they are also consistent with community values and should be practised in all settings in and outside school.

The three PBL values are underpinned by our Turtle Goals of:

- Show respect
- Right place, right time
- Hands and feet to self
- Follow instructions
- Quality Work



If every student strives to achieve these goals they will almost certainly experience academic success and their wellbeing will be enhanced. I encourage all parents and carers to have high expectations of their students in school and community settings.

Meet and Greet

On Tuesday 16th February we had our annual "Meet and Greet" which provided parents and carers with the opportunity to meet new and "old" staff in an informal setting. It was a great roll up and the event was held in full compliance with COVID-safe practices. Gallons of cordial and lashings of sausages were consumed. I would like to thank parents, carers and staff who attended and would like to acknowledge the P&C for supplying and cooking the food.

Over the next year or so we will endeavour to increase the number of opportunities for parents and carers to further engage with their child's education either in person or through the use of our digital platforms.



T221 Laptop Fees Due

Fri 12th Mar

SRC Leadership Day

Mon 15th Mar

National Day Against Bullying

Fri 19th Mar

Harmony Day

Sat 21st Mar

Paint the Ridge REaD

Sat 27th Mar

K-12 Cross Country

Fri 26th Mar

Primary Athletics Carnival

(Stage 3 - 6)

Wed 16th June

Secondary Athletics Carnival

Thurs 17th June

Infants Athletics Carnival

(Early Stage 1 - 2)

Fri 18th June

NAIDOC Week

Mon 21st - Fri 25th June

Join us on

SkoolBag

 Like us on **Facebook**

2021 School Newsletter now available online via our Skoolbag App and website on www.lightningr-c.schools.nsw.edu.au



Secondary Deputy Principal's Report

Our annual Meet & Greet was held in Week 3, Thank you to all those parents who came along to meet their children's teachers. The P&C as usual cooked a BBQ for us all. Thank you to the P & C for their donation of time and sustenance. Mr Finter presented the new senior learning agreement to students in year 11 and their parents. The agreement outlines the responsibility of the school and senior students to their learning. Parents of senior students (Years 11 & 12) should ensure they read this important and informative document.

Some students in Years 10, 11 and 12 travel to Walgett TAFE once a fortnight to study Automotive, once again this is a fantastic opportunity for some of our budding mechanics and improves their opportunity to gain employment.

It is important that students arrive on time to school so they are informed about these opportunities, There are a number of sporting and cultural excursions on the horizon. Students must be in quickstart at 8:40 to receive information about these events.

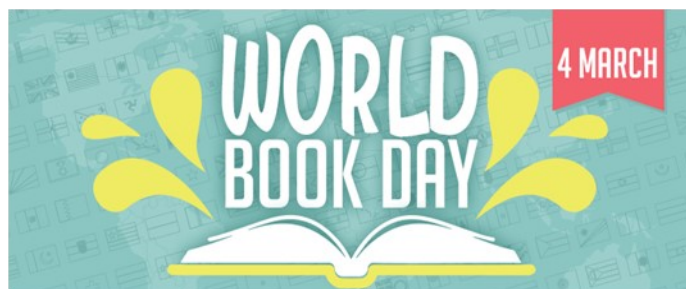
This week we welcome Mr Thomas Degens to our staff, Mr Degens will be working in the TAS– Metal/Wood area, replacing Mr Markham.



Library Report

What a great start to the year. Primary classes are hard at work on their various topics. I am excitedly looking forward to setting the library back up as the air cons are finalised.

March is a very busy month for Librarians and book lovers, with Doctor Seuss' birthday on the 2nd and World Book Day on the 4th. The Premier's Reading Challenge officially opened on the 1st of March. All reading challenge cards submitted in Term 4 are being added to the student records now. Add that to all the exciting at school events coming up in the next few weeks and it is shaping up to be a crazy month.



Book Character Parade

I am mentioning this early to give everyone time to think about the costume and how to do it. By no means are we saying go buy a costume to look exactly like a character, you could use what is at home to create a book inspired costume. Some of the more interesting ones I've seen are made at home. Between now and Term 3 I am hoping to share so ideas that are pretty easy to make. This week is June dressed up like Anne from Anne of Green Gables. This costume may not be an exact replica of her costume in the story but it was INSPIRED by it, which is just as amazing.



Positive Behaviour for Learning

Lightning Ridge Central School share a Positive Behaviour for Learning focus with our Students each fortnight. Students who show exceptional PBL values are rewarded throughout the year with excursions, special activities and treats.



This fortnight's PBL focus is Follow Instructions



This symbol represents a journey, with an adult footprint on one side and small dots for children's footprints on the other.

Children are following the adult, not being herded or chased - this is a significant point. They are following, but are still on their own side of the track, showing that balance between self-direction and social support.

Follow reasonable instructions the first time.

Primary Students should arrive at school by 8:55am

Secondary Students should arrive at school by 8:40am

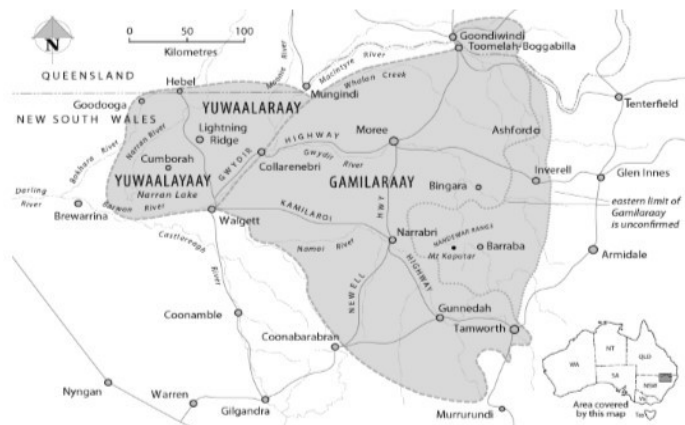
LATE IS NOT GREAT

Yuwaalaraay is the dialect of the Lightning Ridge area. The name of the language and Aboriginal people of the Balonne River Region.

Yuwaalaraay **Word of the Week**

Dhiirraabaaga ngaya + I am at school.

Every day counts at
Lightning Ridge Central School



**If you need to get a message to
your child please contact the
school office by 2:30pm.**

Thankyou

Early Stage 1



ES1 Puggles are having pattern lessons every Friday. They are focusing on basic repeating patterns, where a single 'chunk' or unit of repeat is repeated.



A firm grasp of the concept of a unit of repeat allows an early hands-on introduction to the structured counting structure. This structure underlies many later concepts such as counting in groups, multiplication and division, measurement, graphs and even simple algebra and functions.

Stage 1

The students in S1 Dhinawan have been having a wonderful time designing and creating in STEM. They planned and constructed a chair to fit Baby Bear after Goldie Locks broke his chair. They are working to a budget which they will present next week. So much fun!



This term, S1 Balabalaa are focussing on writing using correct sentence structure. Students have been working on turning sentence fragments into simple and compound sentences. Technology has been utilised in helping students improve their reading skills. Ipad are used daily in class and students use educational programs such as Lexia and Epic books to greater develop their reading capacity. During maths lessons, students have enjoyed starting each lesson off with calendar maths activities. Our class calendar is updated each day and students are linking their calendar math to whole number in order to deepen their mathematical understandings.



Stage 1

S1 Yinga, hard at work with the Yuwaalaraay language program. We are learning how to count to ten, how to say hello and goodbye, and even how to say the word butterfly – it is balabalaa. The children look forward to these weekly lessons and we are all very thankful to the people who put in so much effort to make this program successful.



Secondary Studies

Farewell and good luck, Steve Markham.

It was a bitter-sweet moment for Lightning Ridge Central School when we got the news that long-standing staff member Steve Markham had received his transfer to Toormina High School, near Coffs Harbour. We were, of course, happy for Steve; he can finally be close to his beloved family. But Steve's departure has left a huge hole. As well as being a Maths teacher, Steve has been the backbone of our Design and Technology faculty for many years.

We will miss Steve's quiet dedication to his students and his job, his ability to take on any task, and his behind the scenes work – from training students in sport (particularly basketball) to being a Mr Fixit for all manner of repairs.

Good luck in your new job and at your new school, Steve.



Stage 5 Agriculture

The Stage 5 Ag class has hit the ground running this year with several projects planned for this year. Many of these activities are able to take place due to the generosity of members of our local community who are passionate about encouraging local students into a career in Agriculture.

We have entered the schools Merino Wether Challenge again this year, and Students accompanied by Mrs Currey, will be travelling to Walgett to pick up the sheep. They will be given an overview of the wool industry, as well as introductory lessons on sheep genetics and nutrition to assist them in the competition. A local excursion planned to Llanillo this week to watch shearing taking place, will provide the students with a snap shot of the industry.

Currently the students are busy learning about vegetable production and amenity Horticulture. Many seeds have been sown ready for Autumn and Winter vegetable production and we look forward to harvesting bumper crops.

Stage 6 Primary industries students have just completed a unit on Potting plants and we have a surplus of frangipani trees for sale. If you would like to order some, for the wonderful price of \$10, please contact the school.

As a result of money raised through the sale of surplus produce, we have been able to purchase work-shirts for the students to wear as part of their PPE when working with at the Ag plot or on excursions.



Mandatory Technology

Year 7 Mandatory Technology-Food and Agriculture, recently completed a science cooking experiment. They learnt how cream can be transformed into butter. Milk and cream are composed mainly from fat and water. When we shake the cream in a jar, the fat globules bash against each other. This makes their skins break and as we keep shaking the freed fat molecules join together making one big lump of fat which separates from the water. Students removed the waste water, added a pinch of salt and enjoyed fresh oven rolls with butter.



STEM

Year 7 STEM did an amazing job creating solar ovens in their unit of Renewable and Non-renewable Energy Unit. They were able to create the ovens, experiment with melting chocolate and time the melting point.



Visual Arts

Year 11 Visual Arts are exploring the artwork of Edvard Munch. The students are expressing their emotions through Photomontage on Photoshop. The students have explored a range on emotions from insanity to gratitude. Others have expressed their connection to the Ridge and the power of nature.



Gloria Khabo 'Help'

Visual Arts



Skye Macpherson



Skye Macpherson



Jazmyn Whitty 'Choose Happy'



Jazzmin Farkas



Liddy Brenton 'Insanity'

SRC 2021



Madison Cree S1D



Pearl O'Hagan S1Y



Ruby Rowland S1B



Milli McCabe S2H



Sophie Miller S2O



Billy-Jo Dominic MC



Riley Benjamin S3C



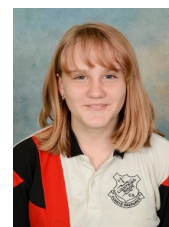
Haille Bamford S3B



Charlotte McFadden



Ayerah Sohail Yr 7



Dannielle McFadden Yr 8



Nick Newton Yr9



Jada Seaton Yr 10



Amelia Wilson Yr 11

Congratulations to
all our new SRC
Representatives
for 2021.

Long Distance Swimming Carnival

Congratulations to all the students who competed in the Long Distance Swimming Carnival on Wednesday 10th February. It was a fantastic day filled lots of participation and outstanding sportsmanship.

Primary students who qualified competed at the Barwon Carnival on Wednesday 17th February at Lightning Ridge Olympic Pool. Secondary students will need to qualify before competing in the Regional



Moment of the day!!

Five Primary students, Martin Babic, Koby Carpenter, Solomon Seabrook, Evan Weisnet and Miles Smith all competed in the Junior 4x50 Individual Medley. Miles was on his final lap and Martin, Koby, Solomom and Evan were cheering him home, chanting his name and clapping.

Proud moment. Well done!

What amazing students we have at LRCS.



Laptop Payments Now Due

T221 Laptop Lease payments are due by
Friday 12th March, 2021.

Laptop payments are due week 7 of every term.
Any laptops with outstanding payments after this
date will be collected and stored at the School until
payment is made.

*Payments can be made online via Skoolbag or
Lightning Ridge Central School's web site
by clicking "make a payment" and following the
prompts by using your credit/debit card.*

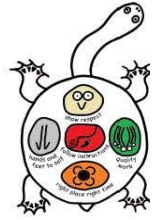
*Alternatively, you can pay cash or cheque at the
School Office.*





Lightning Ridge Central School

Respect · Responsibility · Pride



17 February 2021

GENERAL VOLUNTARY SCHOOL CONTRIBUTIONS

Dear Parent/Guardian,

To assist with the running of programs in this school and to supplement the grant provided by the Department of Education, parents are asked to support the school by paying a voluntary contribution of \$40.00 per student.

Contributions collected at Lightning Ridge Central School are used to purchase reading and library materials, curriculum resources, ICT and a variety of services and facilities which support our educational programs. Contribution amounts are set and ratified by the School Board each year.

Voluntary Contributions are payable at the front office or online via the school website or Skoolbag App. Although voluntary, these payments are greatly valued by the school and we appreciate payment at the beginning of the year where possible. School voluntary contributions are not compulsory.

1 st Child in Family	\$40
2 nd Child in Family	\$30
3 rd Child in Family	\$20
4 th or more Child in Family	\$10

Payment of voluntary contributions can be paid at the Schools' office during school hours (8:30am - 3:15pm Monday to Friday) by cash or cheque.

Payments can also be made online via our Skoolbag App "make a payment" tab, or our School website www.lightningr-c.schools.nsw.edu.au by clicking on "Make a payment" and following the prompts using your debit, Visa or MasterCard.

Richard Finter
Principal

WE ARE HIRING



Lightning Ridge Central School is hiring!

Expressions of interest are invited
from people interested in the
position of

School Administration Officer
working in the School Office.

School Administrative Officers are responsible for assisting in a range of school, classroom and office activities, eg record keeping, book keeping and other clerical duties, reception, operating and maintaining classroom and office equipment, purchasing, preparing and maintaining stock and learning/resource materials.

This position is **2 days per week (with the option of additional casual days)** and will commence Monday 22nd March 2021 until Friday 25th June 2021 (with the possibility of an extension for the duration of the year).

Applicants are requested to address each of the selection criteria (**selection criteria must not exceed two A4 pages**)

Selection criteria

- Well developed communication and interpersonal skills with the ability to work as part of a team to support the local school community.
- Demonstrated ability to effectively utilise office programs such as Word and Excel.
- Demonstrated capacity to exercise initiative, organise resources and meet deadlines.

Resume, cover letter and selection criteria should be submitted by 5pm on Friday 12th March 2021 to **Kelly Morriss** kelly.morriss3@det.nsw.edu.au

For further information contact the school on **0268 290 511** or kelly.morriss3@det.nsw.edu.au



This year Primary classes are implementing the Smiling Mind Program and staff have undertaken professional development recently.

The aim of Smiling Mind is to help make future generations happier and healthier through the practice of mindfulness meditation. Free mindfulness training, resources and teaching tools are available to staff, students and families through the Smiling Mind website and app. It is already used by over 195, 000 teachers and 3.8 million young Australians.

Mindfulness is noticing what is happening right now, paying attention to the present moment and being aware of your thoughts and feelings without distraction or judgement. It is not about clearing the mind of thoughts, nor of only feeling positive emotions but it is a way to develop an attitude of self-kindness and acceptance. With repeated practice, students become more attentive, make better decisions about what to give their attention to, and improve their mental health and engagement with learning.

For more information, videos, guides and to even use Smiling Mind yourself, visit their website:

www.smilingmind.com.au

HEALTHY TIPS FOR HEALTHY FAMILIES

CHOOSE HEALTHY SNACK OPTIONS		MAKE WATER YOUR DRINK
	TURN OFF THE SCREEN AND GET ACTIVE EACH DAY	EAT MORE FRUIT & VEG
GET INVOLVED IN ACTIVE TRAVEL	CHOOSE HEALTHY, EVERYDAY OPTIONS AT THE CANTEEN	

FOR FURTHER INFORMATION VISIT:

Live Life Well @ School <https://www.health.nsw.gov.au/health/primarieschools>

Healthy School Canteens <https://healthyschoolcanteens.nsw.gov.au>

Healthy Lunch Box ideas <https://healthylunchbox.com.au>

Live Life Well @ School



#IS RESOURCE WAS DEVELOPED BY WESTERN NSW LOCAL HEALTH DISTRICT

ACTIVE TRAVEL

Benefits of active travel

- ☺ Increases physical activity
- ☺ Improves concentration
- ☺ Increased time to talk to your children and find out about their day
- ☺ Learn important road safety skills
- ☺ It's *free*!!

Active travel doesn't just have to be during the week - Try it on the weekend as well!!



Types of Active travel

- ☺ Walking/ running
- ☺ Bike riding
- ☺ Scooter
- ☺ Skateboarding



International Women's Day Choose To Challenge

LUCKY DOOR PRIZES BINGO WITH A TWIST HEALTH CHECKS
MORNING TEA / LUNCH PROVIDED

LIGHTNING RIDGE

Where: Mackillop Building

Time: 11:00am—2:00pm

Date: Thursday 11th March

Supported by the Lightning Ridge Interagency

Lightning Ridge Central School



P&C needs you!



**We are looking for new members
to join the P&C in 2021.**

**The P&C are an integral part of
our school community.**

- **Raising funds to provide services and equipment**
- **Liaising between Parents/Carers and the school**
- **Promoting a positive learning and social environment**

**P & C Meetings are held at the school in Week 3 & 7
of each Term at 5:00 pm**

**Next meeting is Tuesday 9th March at
5:00 pm
All Welcome**





St Vincent de Paul Society
good works

Vinnies is looking for Volunteers.

Do you have a passion to make a difference in your community?

Do you have at least four hours of spare time each week?

Then Vinnies would love to hear from you.

No experience required, Vinnies will train and mentor you at every stage.

Make New Friends, Build Relationships and Acquire New Skills.

But mostly be part of a community who give those in need a helping hand.

Get an application pack at your local Vinnies Shop today or call 02 6862 5758 for more information.

The PTRR Dhinawan is Celebrating its 2nd Birthday.

Where - Out the front of John Murrays Art Gallery.

When - Saturday 27th of March 2021 - Over the morning... from 9 -11.

What is happening - Grab a bag, some books and a book mark to take home.

Leave you mark to say you have been, with a red hand print and signature.

Morning tea and then cupcakes to celebrate.

Supporting our local Community Capacity Building Project :-

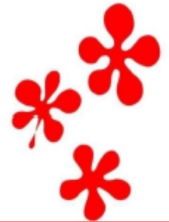
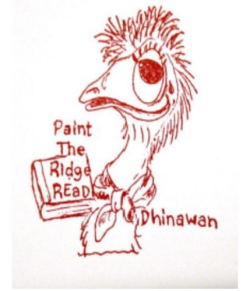

- promoting **Relationships**, **Literacy** and **Learning**.

The PTRR Dhinawan's Motto is

- **Talk, Read, Sing and Rhyme with your child all the time.**

Everyone Welcome.

We will be social distancing and family grouping, in the outdoor area of the gallery. COVID practices apply.

AIKIDO CLASSES

JAPANESE MARTIAL ART

- Self Defence
- Self Confidence
- Self Esteem
- Concentration
- Fitness
- Balance & Core Strength
- Social Skills
- Awareness & Self Defence

FREE!!!

Eligible Students Year 7 - Year 12
to ask Mr MacLean for an
application form

LESSONS HELD
Monday & Thursday from
3:15pm

Lightning Ridge Central School
Kaolin Street, Lightning Ridge 2834



ITS BACK for 2021

**LIGHTNING RIDGE
EASTER FESTIVAL**

FUN FOR THE WHOLE FAMILY

FUN STARTS
GOOD FRIDAY 2ND APRIL thru to
EASTER SUNDAY 4TH APRIL 2021

Stay tuned for further details

COVID restrictions will apply

2021 School Calendar

If you missed out on your 2021 School Calendar magnet at the end of last year, please come and pick up your copy from the school office.



Lightning Ridge Central School

Respect Responsibility Pride

Kaolin Street, PO Box 294
Lightning Ridge NSW 2834

Tel: 0268 290 511
Fax: 0268 290 137

email: lightningr-c.school@det.nsw.edu.au
web: www.lightningr-c.schools.nsw.edu.au

Join us on Facebook



School Holiday / Pupil Free Day

2021

Term ONE							Term TWO						
Week	Mon	Tue	Wed	Thu	Fri	Sat/Sun	Week	Mon	Tue	Wed	Thu	Fri	Sat/Sun
January	18	19	20	21	22	23/24	April	12	13	14	15	16	17/18
January 1	25	26	27	28	29	30/31	April 1	19	20	21	22	23	24/25
February 2	1	2	3	4	5	6/7	April/May 2	26	27	28	29	30	1/2
February 3	8	9	10	11	12	13/14	May 3	3	4	5	6	7	8/9
February 4	15	16	17	18	19	20/21	May 4	10	11	12	13	14	15/16
February 5	22	23	24	25	26	27/28	May 5	17	18	19	20	21	22/23
March 6	1	2	3	4	5	6/7	May 6	24	25	26	27	28	29/30
March 7	8	9	10	11	12	13/14	May/June 7	31	1	2	3	4	5/6
March 8	15	16	17	18	19	20/21	June 8	7	8	9	10	11	12/13
March 9	22	23	24	25	26	27/28	June 9	14	15	16	17	18	19/20
March/April 10	29	30	31	1	2	3/4	June 10	21	22	23	24	25	26/27
April	5	6	7	8	9	10/11	June/July	28	29	30	1	2	3/4

Term THREE							Term FOUR						
Week	Mon	Tue	Wed	Thu	Fri	Sat/Sun	Week	Mon	Tue	Wed	Thu	Fri	Sat/Sun
July	5	6	7	8	9	10/11	September/October	27	28	29	30	1	2/3
July 1	12	13	14	15	16	17/18	October 1	4	5	6	7	8	9/10
July 2	19	20	21	22	23	24/25	October 2	11	12	13	14	15	16/17
July/August 3	26	27	28	29	30	31/1	October 3	18	19	20	21	22	23/24
August 4	2	3	4	5	6	7/8	October/November 4	25	26	27	28	29	30/31
August 5	9	10	11	12	13	14/15	November 5	1	2	3	4	5	6/7
August 6	16	17	18	19	20	21/22	November 6	8	9	10	11	12	13/14
August 7	23	24	25	26	27	28/29	November 7	15	16	17	18	19	20/21
August/September 8	30	31	1	2	3	4/5	November 8	22	23	24	25	26	27/28
September 9	6	7	8	9	10	11/12	November/December 9	29	30	1	2	3	4/5
September 10	13	14	15	16	17	18/19	December 10	6	7	8	9	10	11/12
September	20	21	22	23	24	25/26	December 11	13	14	15	16	17	18/19
							December	20	21	22	23	24	25/26



**LIGHTNING RIDGE
JUNIOR RUGBY LEAGUE**

REGISTRATIONS NOW OPEN

Claim your active kids voucher: ServiceNSW

Log in or register: profile.mysideline.com.au

Wednesday 10th March

5-6PM

BBQ @ Spider Brown Oval

Help with sign up. Plus grab your shorts & socks.

Please contact:

President: Brad Benjamin 0458195951

Secretary: Jacinda Barry 0427944775

180 YEARS



Real Wellbeing



Our aim is to keep you motivated, active and independent.

Lightning Ridge Local Transport is now available every Wednesday and Thursday 9:00am – 2:00pm.

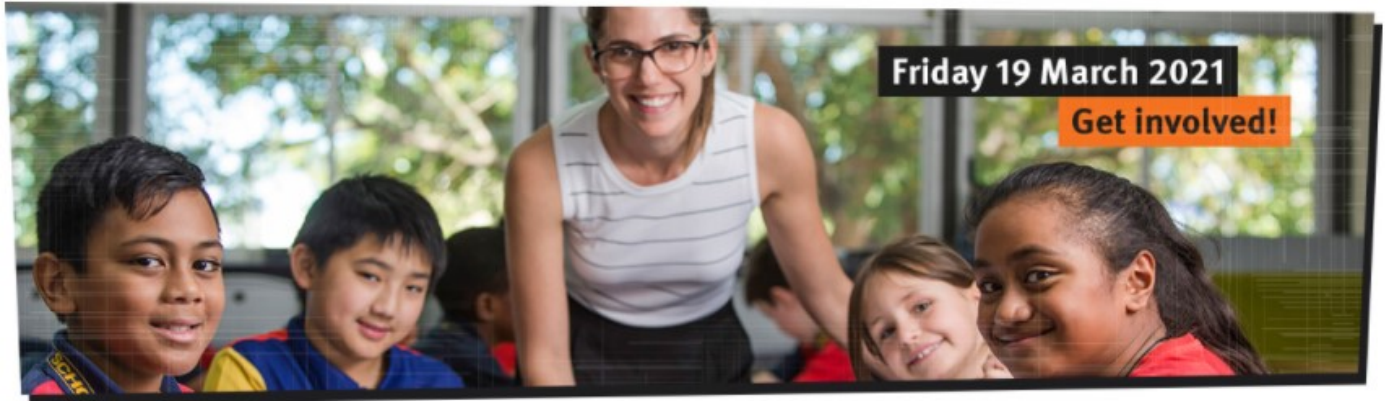
Do you need transport? Let us help you to get out and about.
We are committed to supporting your independence.

Australian Unity Community Transport provides you with a safe and comfortable service for your day to day needs including shopping/personal business, medical appointments, visit family/friends, community activities or group outings.

To find out more about our transport services and how we can assist you, please call our Community Transport Team on 1300 295 826

Do you have any time to volunteer to keep our community on the move? Please call 1300 295 826 for more information.

National Day of Action against Bullying and Violence



Friday 19 March 2021

Get involved!

BULLYING. NO WAY!

73%

reported positive changes for students



66%

reported positive changes in school climate



66%

reported positive changes for staff



WALGETT TYRE & NEW HOLLAND

WALGETT & MULGA MUDLARKS

PRESENT

2021 NSW CHAMPIONSHIP

13th & 14th March

BUGGYS, STANDARDS, MODIFIEDS & JUNIORS

BAR – BBQ – JUMPING CASTLE – TUG OF WAR

Walgett Show Grounds

ENTRY FEE: \$10 PER ADULT 16+
\$5 PER CHILD – UNDER 5 FREE

\$25 FAMILY PASS – INCLUDES 2 ADULTS AND 2 CHILDREN

GATES OPEN AT 9AM SATURDAY & 6AM SUNDAY

HOME BI-RITE FUCHS TILLY'S



Little Diggers Preschool and Child Care Centre



FOR THE SAFETY OF THE CHILDREN

From a recent survey with our families, it has come to our attention that there are a number of cars that are constantly using the carpark and related areas, which are not associated with Little Diggers.

Just a friendly reminder that the drop off and pick up drive through area and parking lots are for Little Diggers use only.

Thank you for your understanding.

Important Information

Medication: If your child needs medication, has Asthma, Allergies or Anaphylaxis the Office must be notified. If your child requires medication to be administered at School you will be required to sign a medical consent form for permission to medicate. All medication must be clearly labelled and named.

Absences: Parents are legally obliged to send their children to school. If your child is absent or you know they are going to be absent you are required to notify the school or send a note to the class room teacher and front office. Absentee notes can be found in the back of this booklet or on Skoolbag.

Bus Travel: Students who wish to catch the bus need to complete a travel advice form. These forms can be obtained from the School Office or the Bus company - NRC buses 02 68 294 110.

Updating Student Information: If there is a change in circumstance in your child's life eg. Address or telephone please notify the Office.

Family Court Matters: For us to best be able to provide your child with duty of care please provide us with any court documents and phone school to make appointment with the principal.

Breakfast Club: We have a free a free breakfast club students K-12. This service operates from 8.30am until 9am Monday –Friday.

School Uniform: At Lightning Ridge Central School we pride ourselves on the appearance of our students and how they represent our school. We have a high expectation of our students to wear their uniforms whilst attending school and representing the school on excursions as well as community events. LRCS uniform shop operates Monday and Thursday Mornings 8:30am to 9:00am.

Name and Label your Childs belongings: Lost property is located in your child's classroom and at the Front Office. Please check lost property regularly as items that remain at the end of each term will be recycled into the uniform pool

Bell times

	Monday	Tuesday	Wednesday	Thursday	Friday
Lesson 1	8:40 - 10:00 (Secondary) 8:55-10:00 (Primary)	8:40 - 10:00 (Secondary) 8:55-10:00 (Primary)	8:40 - 10:00 (Secondary) 8:55-10:00 (Primary)	8:40 - 10:00 (Secondary) 8:55-10:00 (Primary)	8:40 - 10:00 (Secondary) 8:55-10:00 (Primary)
Lesson 2	10:00-11:00	10:00-11:00	10:00-11:00	10:00-11:00	10:00-11:00
Recess	11:00-11:30	11:00-11:30	11:00-11:30	11:00-11:30	11:00-11:30
Lesson 3	11:30-12:30	11:30-12:30	11:30-12:30	11:30-12:30	11:30-12:30
Lesson 4	12:30-1:30	12:30-1:30	12:30-1:30	12:30-1:30	12:30-1:30
Lunch	1:30-2:00	1:30-2:00	1:30-2:00	1:30-2:00	1:30-2:00
Lesson 5	2:00-2:57	2:00-2:57	2:00-2:57	2:00-2:57	2:00-2:57
