

LIGHTNING RIDGE CENTRAL SCHOOL



Principal:
Primary Deputy Principal:
Secondary Deputy Principal:

Mr Richard Finter
Ms Jane Taylor
Mrs Margaret Morriss

PO Box 294, Kaolin Street
Lightning Ridge NSW 2834
T 02 68290511 F 02 68290137
E lightningr-c.school@det.nsw.edu.au

Term 4, Week 6 2021

Principal's Report



COVID News

We continue to operate under Level 3 restrictions and this has implications not only for our day-to day school operations but also for occasions such as our Creative and Performing Arts (CAPA) Night and our end of year Presentation Assembly.

Preparations for the CAPA night are well underway with staff working hard with students on performances but I would like to acknowledge the efforts of our Music teacher Mr Lucas

Schembri in preparing instrumental ensembles. I would also like to acknowledge our Business Manager, Mrs Kelly Morriss and her loyal team of volunteers who have been working in their own time to make costumes and sets.

To support student curriculum we will be allowed an audience at the CAPA Night on Tuesday 8th December at 5.00pm but all audience members must show proof of double vaccination to attend.

The end of year Presentation Assembly will take place at 10.00am on Wednesday 9th December. Unfortunately, due to COVID restrictions we will not be able to have parents/carers on site. This is not ideal but as a school we abide by the NSW Department of Education guidelines. This event however, will be recorded and posted on our social media platforms and school website for parents and carers to enjoy.

In accordance with Public Health Orders, all staff and contactors who work on NSW Department of Education sites, unless given a medical exemption must have been double vaccinated by November 8th. Hence, parents and carers can be assured that they are sending their children to a school where all reasonable measures have been taken to maximise the safety of their students with regards to COVID-19 and any other potential safety hazards.

Change is inevitable:

Teaching and learning as well as how schools operate are not the same as when I was at school in the 70s and 80s and certainly the demands of teachers are far greater than when I started teaching in 1988. Education changes and hence schools must change as well. As a principal it is my responsibility to lead this change and ensure that any change is not just for the sake of it, but that change benefits the students in our care.

To that end, over coming newsletters and videos that will be posted online I will outline some of the changes we will be implementing, particularly in the secondary section of the school in 2022.

For any of us to thrive and succeed in an educational or wider setting we need to actively work towards improving our wellbeing. In schools we have a number of supports for students; counsellor, year advisors, girls supervisors, teacher mentors as well as specific programmes delivered through our syllabus and by external agencies. This is all underpinned by working collaboratively with parents and carers.

Important INFORMATION

Crafty Sip & Stitch

Tuesday's
From 4:30pm - 6pm

Kindystart

Every Friday
Commencing Fri 12th Nov

T122 Laptop Payments Due

Fri 19th Nov

CAPA Performance

Tues 7th Dec

School Photos

Tues 7th & Wed 8th Dec

Presentation Day

Thurs 9th Dec

Last Day of Term 4

Thurs 16th Dec

Secondary Sydney Excursion

Mon 14th - Fri 18th Mar 2022

Kids Helpline

1800 551 800

Beyond Blue

1300 224 636

KEEP SAFE

Join us on
SkoolBag

 Like us on
Facebook

2021 School Newsletter now available online via our Skoolbag App and website on www.lightningr-c.schools.nsw.edu.au

Continued

The partnership between schools and parents and carers is crucial if we are to provide students with the tools to look after their own wellbeing and achieve academically.

Regarding wellbeing, in 2022 all students Years 7-12 will have a timetabled wellbeing lesson. This initiative is being led by Mr Leon Allen, our HT Wellbeing. The lessons will cover a range of topics and will allow students to have access to guest speakers for specific topics without impacting on other lessons. Often in schools we hear of unsafe behaviours that some of our students have engaged in within the wider community. Our response as a school is to then address the issue retrospectively once, in some cases the damage is done and habits have been formed. Through these timetabled lessons we intend to be more pro-active and address behaviours and issues before they arise. Schools cannot solve all of society's ills nor prevent teenagers from making ill-informed or poor decisions but we can attempt, with parents and carers to provide the young people in our care with the skills to make better decisions and we believe by having these wellbeing lessons, we can address this.

This change and a number of others that will be revealed over the coming weeks are evidenced based and have been meticulously researched. They are not thought bubbles. Nor will they have an impact on the number of hours of study secondary students have for subjects such as English, Maths, HSE and PDHPE. All students will still be studying the required number of hours for all of their mandatory subjects.

Our staff are excited about the journey we are going to undertake and we are extremely confident that our students will thrive and succeed as a result of our efforts.

Until next time.



Secondary Deputy Principal's Report

During Week 5 students were completing check in assessments in literacy and numeracy these results will be used to assist in the students learning. During Week 7 some students will be participating in a Naplan online readiness, this is used to test our technology systems and to give students an opportunity to practice the online Naplan procedures.

Students are now working towards completing course work, assessment tasks and practical projects. School continues until Thursday 16th December, students need to bring all their equipment and be ready for learning until the end of the year.

The HSC has finally commenced, there was a last minute change of venue due to the requirements for students over 16 years of age needing to be double vaccinated. Thanks to our wonderful office staff for organising the alternative venue and to Walgett Shire for the use of the new Multi Purpose building at Spider Brown Oval. We wish all our Year 12 students the best of luck.

Commencing in Week 6 students will be participating in 'clubs' each Friday afternoon after lunch. Clubs running are drone flying, cooking, aquatics, art, board games, making & doing, soccer.

This is to enable students to try something new and develop different skills and abilities.



If you need to get a message to your child please contact the school office by 2:30pm.



Primary Deputy's Report

Many students have returned to school and continue to have excellent attendance. School attendance is very important for so many reasons. It is the place where social skills such as communicating, sharing, problem solving and resilience are nurtured and developed. Research also supports the obvious fact that students who regularly attend school have the increased opportunity to develop their academic skills.

The K-2 students can't wait until playtime each day. They are climbing, crawling, jumping and best of all cooperating beautifully as they navigate the new playground equipment. The Stage 3 students have been putting their heads together to come up with some proposals to revamp their playground. They have found some amazing climbing equipment that would definitely keep them active and entertained. We have listened to what the students would like and will certainly be looking at the budgeting for a playground revamp in 2022.

Now that restrictions have relaxed, it is very important to remain vigilant with hand washing and sanitising. Teachers are reminding the students to use the sanitiser donated by the charity Good 360 before eating and when entering the classroom. We continue to be grateful for the generous donations we receive from Good 360.



Positive Behaviour for Learning

Lightning Ridge Central School share a Positive Behaviour for Learning focus with our Students each fortnight. Students who show exceptional PBL values are rewarded throughout the year with excursions, special activities and treats.

This fortnight's PBL focus is Right Place, Right Time



""Right place right time" is shown by a meeting symbol, to give that idea of protocol and Law in knowledge exchange.

Primary Students should arrive at school by 8:55am
Secondary Students should arrive at school by 8:40am

LATE IS NOT GREAT



Worth your Weight in Opal

Ethan Reavell ES1

Ethan was nominated by Mrs Cross for always showing respect to his teachers and peers.



Worth your Weight in Opal

Fynn Worley S1

Fynn was nominated by Mrs Slater for an improved attitude towards his learning.



Worth your Weight in Opal

Khiah Boney S2

Khiah was nominated by Mrs Caley for excellent work in Yuwaalaraay Language lessons.



Worth your Weight in Opal

Tristan Morris S3

Tristan was nominated by Mr Delhaas for consistent effort in maths.



Worth your Weight in Opal

Toby James Yr 10

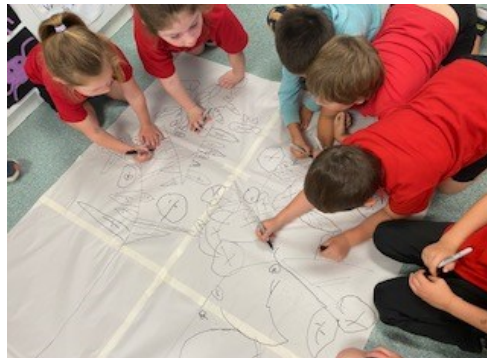
Toby was nominated by Mr Allen for being absolutely outstanding in cooking club.

Early Stage 1



This term ES1P have been learning about living things in science. We explored the school grounds and found trees to be a living thing. This also linked to our SWAY unit My Land, My Australia. As a class ES1P created a tree collage using paint , leaves and sticks.

Once we finished our class collage students created their own individual tree collage.



Throughout this year, Kindergarten has been participating in the SWAY program. SWAY is an oral language and literacy program based on Aboriginal knowledge, culture and stories.

This term we have been studying the SWAY unit, My Land My Australia, which is based around the dreamtime story, Tiddalik. As part of the unit, our class created a collaborative mural with a tree being the central focus. Each of us drew an animal to add to our mural. Before we put our animal on the mural, we sat with Aunty Rhonda and used an Aboriginal language app to learn our animal's name in Yuyuwaalaraay.

HSIE



Students of Year 7R ventured around Lightning Ridge in the school bus to analyse various factors within our fantastic community. Students looked at the quality of roads, houses, businesses and recreational facilities, to name a few. During this process, students completed their own collective Liveability survey which is now available via the link on our school facebook page. <https://forms.gle/yAeAtSkThoafmDEp7>



Yuwaalaraay is the dialect for the Lightning Ridge area. The name of the language and Aboriginal people of the Balonne River Region.

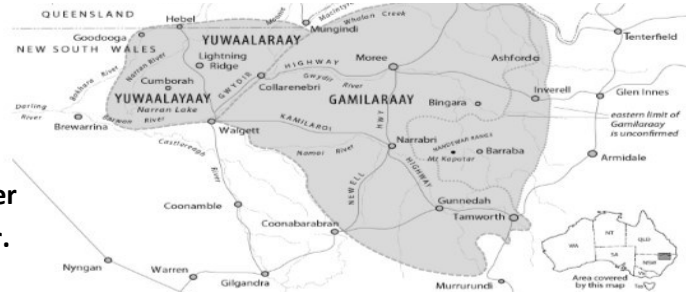
Yuwaalaraay

Word of the Week

Mugiiin-gaa-baal = November

mugiiin.gaa is the sandfly that can appear after floods, which can happen at this time of year.

The *-baal* is short for *baluu*, or 'moon'.



LAPTOP PAYMENTS NOW DUE

T122 Laptop Payments due by Friday 19th Nov, 2021

Laptop lease payments are due Friday of week 7 of every Term. Any Laptops with outstanding payments will be collected in Week 8 and stored at Lightning Ridge Central School until the laptop lease payment is made.

Payments can be paid online via Skoolbag or our School website www.lightningr-c.schools.nsw.edu.au by clicking on "Make a payment" and following the prompts by using your credit/debit card.

Alternatively, you can pay cash or cheque at the School office.



When is sick too sick for school

Gastroenteritis

Symptoms

Diarrhoea, vomiting, fever, stomach cramps and headaches.

Home or school?

Keep home from school for 24 hours until diarrhoea/vomiting stops.



Knowing whether a child is well enough to go to school can be tough for any parent.

Never send a child to school who has a fever, is vomiting or nauseated, or has diarrhoea.



Influenza

Symptoms

Sudden onset fever, runny nose, sore throat, cough, muscle aches and headaches.

Home or school?

Keep home from school until well.

LIGHTNING RIDGE CENTRAL SCHOOL



2021


School Performance

SAVE THE DATE

Tuesday 7th December

School Gym

School Photo Day




Tuesday 7th & Wednesday 8th December

[a] Academy School Photography & Production
orders.academyphoto.com.au ph: 1800 816 224

School Photographs

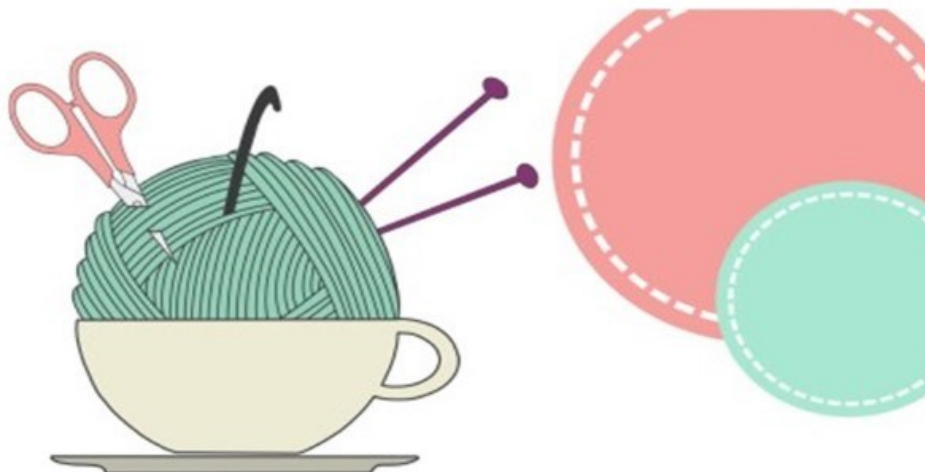
Package	Price	Includes
pack A	\$42	2 - 15 cm x 10 cm 4 - 4.5 cm x 3 cm 1 - individual group 1 - composite group
pack B	\$42	1 - 20 cm x 25 cm 1 - portrait 1 - digital download 1 - individual group 1 - composite group
pack C	\$42	1 - 20 cm x 25 cm 1 - 15 cm x 10 cm 1 - 10 cm x 5 cm 1 - 5 cm x 3 cm 1 - 4 - 4.5 cm x 3 cm 1 - individual group 1 - composite group
pack D	\$27	1 - 15 cm x 10 cm 1 - 10 cm x 5 cm 1 - 4 - 4.5 cm x 3 cm 1 - individual group 1 - composite group
pack E	\$32	1 - 15 cm x 10 cm 1 - 10 cm x 5 cm 1 - 4 - 4.5 cm x 3 cm 1 - individual group 1 - composite group

Customise your own package online
Log in using your secure school key to begin customising



5 - Bookmarks 6 - Gift Cards 7 - Happy Birthday 8 - Merry Christmas 9 - Happy Easter

Academy Photography (Australia) Pty Ltd | ABN 59 712 788 203 | All prices GST included



Calling all Community Members

Join us for

A Crafty Sip and Stitch

The Students at Lightning Ridge Central School are polishing off their dance moves for their annual school performance and we need your help to create their costumes and make the night a success!

You don't have to have any sewing/crafting ability, just come along on the night and enjoy an evening of fun!

Please RSVP for catering to
0439 593 559

*Children must be accompanied
by an adult*



Materials and equipment will be provided



Free refreshments and nibbles available

All Welcome

Lightning Ridge Central School

Kaolin Street, Lightning Ridge

Tuesday's 4:30pm - 6:00pm

Covid-19 guidelines will be adhered to and members will be asked to check-in upon arrival

Returning to School after Lockdown and Isolation

You and your child might be worried about heading back to school. Below is some information and strategies for you and your family to use to get ready for a return to school.



Talking to your child is one of the best ways to work through fears and anxieties. Use language they can understand to discuss returning to school. This is an excerpt and image above from [DHHS Victoria](#).

Early Primary School

- Balance plans to return to school with reassurances that their schools and homes are safe
- Remind them that adults are there to keep them healthy and to take care of them
- Discuss handwashing as a step in staying healthy at school and home
- Use language such as 'adults are working hard to keep you safe'

Upper Primary School

- They may be more vocal in asking questions about whether they truly are safe and what will happen if COVID-19 comes to their school or community
- They may need assistance separating reality from rumour and fantasy
- Discuss efforts of school and community leaders to prevent germs from spreading

High School

- They may be able to discuss COVID-19 in a more in-depth fashion and can be referred directly to appropriate sources of information
- Provide honest, accurate information about the current status of their schooling. Having such knowledge can help them feel a sense of control
- Plan together what the return to school will look like



Plan Ahead: Check uniforms, equipment, bags and other resources.



Name the possible support people at school, home or care.



Talk to your child about going back to school and that things may look different.



If you are concerned that your child is not coping, seek further help. See details on the next page.



Eat well, sleep well and be active.

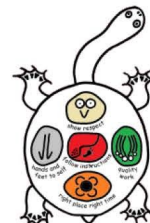


Take care of yourself and acknowledge the difficulties you have been through.



Lightning Ridge Central School

Respect · Responsibility · Pride



5 October 2021

Presentation Day 2021

Dear Community Member,

The Lightning Ridge Central School Presentation Day will be held on Thursday 9th December 2021 at 9:30 am in the school gymnasium.

We would like you to consider making a donation towards our Students book prize at Presentation Day. We have over 325 students enrolled at our School and have a special award for two Students in each class who have excelled throughout the year. The Students selected will receive a special book prize to the approximate value of \$30.00. Every Student in Kindergarten will each receive a book to commemorate their first year at school.

With your generous support we would like to continue these prestigious awards and once again kindly ask for your donation.

In return for your generous donation, we invite you to join us for Presentation Day depending on COVID restrictions. You will be supplied with a tax invoice, be publicly thanked, have your name published on the Presentation Day Program and receive a certificate of appreciation to display in your home or business.

To promptly organise the awards in time for Presentation Day, it would be helpful if your donation could be made by 5th November 2021. Donations can be mailed to the School (address listed below), made by cash, cheque or Eftpos at the School's Office or online at www.lightningr-c.schools.nsw.edu.au. Click on "Make a Payment" and follow the prompts. All donations can be made either anonymously or with full public thanks.

Yours faithfully,

Richard Finter
Principal



Please find enclosed cheque/cash for \$_____ being a donation towards the 2021 Lightning Ridge Presentation Day Awards.

I do not mind being publicly thanked for our donation

☐

I wish my donation to be made anonymously

☐

Signed:

Name:

Organisation:

Postal Address:

SYDNEY CAMP

14TH MARCH – 18TH MARCH 2022

STUDENTS IN YEAR 9, 10 AND 11 DURING 2021
ARE INVITED.

PLEASE SEE THE FRONT OFFICE FOR A
PAYMENT PLAN AND NOTE FOR YOUR
STUDENT.



**If you need to get a message to
your child please contact the
school office by 2:30pm.**

WARNING



No Aerosol Spray

ALERT: ASTHMA AND AEROSOLS

Some members of the Lightning Ridge Central School Community suffer severe allergies to aerosol sprays or perfumes that can act as a trigger to an (often) serious asthma attack, or bring on a medical complication in a sensitive individual.

The allergy can be sufficiently serious to put staff or students into anaphylactic shock if an aerosol can has been used anywhere in their vicinity. This can be a life threatening situation, resulting in the staff member or student being transported to hospital in an ambulance.

- Roll-on and stick deodorants are permitted at school.
- Aerosols are banned from school premises, excursions, sporting events and all events where students are in confined spaces.
- Students are encouraged to follow correct hygiene procedures by applying deodorant at home after showering: a good deodorant will last all day if applied to clean skin before dressing.

Let's Help to Create an Asthma Friendly school. This means that everyone needs to be aware of their own:

- Right to a safe learning environment.
- Responsibility for the health and safety of others in their shared spaces.

Remember: No student is to use or bring aerosol deodorants or sprays to school.

Teachers have been asked to confiscate any aerosol products found at school and bring them to the Deputy Principal. Parents will be informed that the products have been collected from their son or daughter and that they can call into the school and collect the product.

Thank you for considering the health and safety of others.

How To Wear Your Mask Correctly



DO

Wear your mask above your nose
and below your chin.



DO NOT

Wear your mask below your nose.

Lightning Ridge Central School

*For those who
like Scripture,
you may like to
come along to...*

ROCK
garden

What: a kids' program for preschool to year 6

Where: Lightning Ridge Community Church, 13 Morilla St

When: 9-10:30am Sundays, starting October 17

Why: to learn about Jesus (the 'Rock' we can trust) and to grow as his friends



This term we are looking at the book of Judges in the Bible, to learn about the unlikely heroes God sent to save His people, and how they point us to the Super Saviour - Jesus!

For more information contact Heather at hmrobinson143@gmail.com

Please note that while current Covid regulations are in place with regard to double vaccinations, any children who attend ROCK garden require a fully vaccinated adult from their household to attend church with them. We look forward to the time when we are able to unconditionally welcome everyone!

Personalised Puzzles!

2 x S/M Puzzles or
1 x LARGE Puzzle

www.kidzjigz.com.au

CREATIVE KIDS
REGISTERED PROVIDER
Claim your \$100 voucher here

NSW GOVERNMENT

**Creative Kids Vouchers Accepted*

KIDZ JIGZ

Healthy Lunch Box website

A one-stop-shop for everything you need to know about packing a healthy lunch box.



Here's what you'll find on the website:

- [Interactive lunch box builder](#) that helps parents and kids plan and pack a healthy lunch with foods they like.
- Lots of quick and easy [recipes](#) and [snack ideas](#).
- Informative [blogs](#) about healthy eating for the family.
- [Sign up](#) to receive the Healthy Lunch Box e-newsletter for ideas, updates and recipes.

healthy lunchbox.com.au



Cancer Council
Healthy Lunch Box

SpeakUP

Building skills and confidence for participation at school

We have listened

Bringing you an exciting free online program co-designed with young people.

Students

- Do you feel like you are missing out on doing things at school?
- Would you like to feel more confident making decisions about what you would like to join in with at school?
- Have you thought of ideas you would like to try?

Parents/Ally

This program can assist you to build your confidence when supporting your student with their advocacy skills for inclusion and participation in mainstream school activities.



What do we offer?

- A unique and time limited online program available to students 7-14 years with a disability enrolled in any mainstream schools across NSW.
- Open to young people with or without an NDIS plan.
- Our skilled facilitators are experienced in working with young people and families to deliver this program online.
- Each student will have individualised sessions working towards their identified goal.
- Access to a range of resources through an online resource bank.
- This program will offer parent training sessions to develop and support their student's advocacy skills.

For more information or to refer please contact:

Email: speakup@lifestart.org.au
Phone: 1800 317 030
If interested [click here](#).



SpeakUP is funded by Department of Social Services as an Information, Linkages, Capacity Building (ILC) grant (NDIA)

SkoolBag

Don't forget to download our school's SkoolBag app to ensure that you are kept in the loop on:

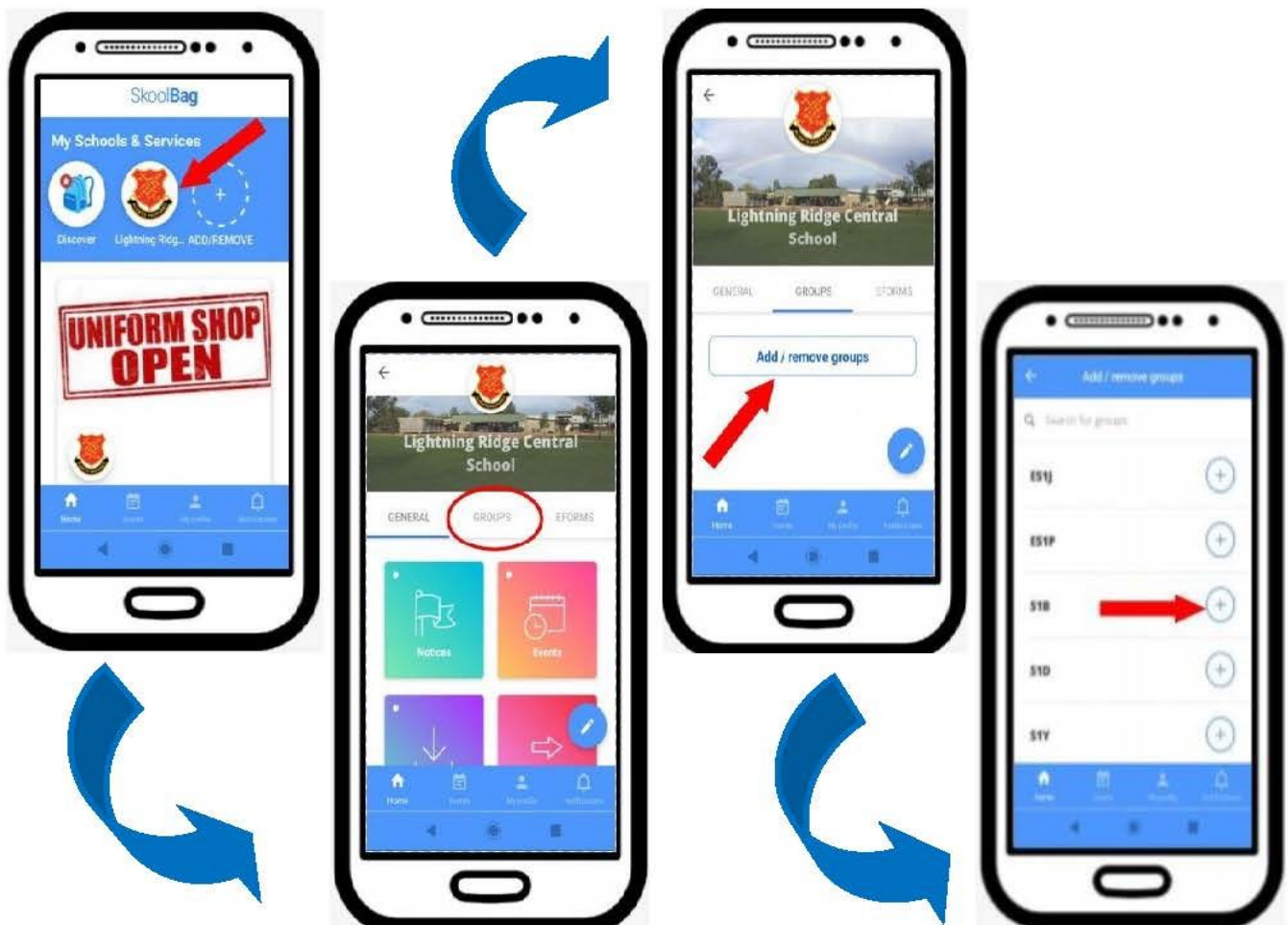
- * School newsletters
- * Notices
- * Events
- * Cancellations
- * Reminders
- * ...and more!

**INSTALLATION
INSTRUCTIONS**

Just download the "SkoolBag" app on your phone, open the app and add our school!

Subscribe to Groups

Select Class/ Year Group to appear in your feed





Lightning Ridge Central School P & C Uniform Shop Price List

WHOLE SCHOOL ITEMS	PRICE	SIZE	QUANTITY	TOTAL
Caps—BB Black Red/ logo	\$7.00			
Hats—Bucket (Black)	\$5.00			
Hats—Red wide brim	\$7.00			
Back Packs Large	\$30.00			
Black Jackets—no logo (XXL only available)	\$20.00			
Library Bags (Currently on backorder)	\$5.00			
Sports Shirts—House colours	\$7.00			
JUNIOR K - 4				
Shirts—Red	\$20.00			
Sloppy Joe—Red, logo	\$20.00			
Track pants—Black, Micro fibre	\$24.00			
Track pants—Black, Fleecy	\$20.00			
Shorts—Black <i>old stock. Rugby</i>	\$12.00			
Shorts—Black, Micro fibre, Cargo	\$15.00			
Skorts—Black	\$15.00			
MIDDLE YEAR 5 - 9				
Shirts—Black / Red / White (Stage 3, 4 & 5)	\$25.00			
Jacket—Black (Large sizes only)	\$40.00			
Track pants—Black Fleecy	\$20.00			
Track Pants—Black Micro Fibre	\$24.00			
Jumper—Polo Black Logo 5-8yrs	\$25.00			
Shorts—Black	\$15.00			
Shorts—Black, Micro fibre, Cargo	\$15.00			
Skorts—Black	\$15.00			
Jackets—Red/Black (new)	\$35.00			
Canterbury Jersey 9yrs	\$65.00			
SENIOR YEAR 10 - 12				
Shirts—White	\$20.00			
Jacket—Black/Red	\$40.00			
Track pants—Black Fleecy	\$20.00			
Track Pants—Black Micro Fibre	\$24.00			
Shorts—Black <i>Rugby</i>	\$12.00			
Jackets—Red/Black (new)	\$35.00			
Canterbury Jersey	\$65.00			
			TOTAL	

CONTACT DETAILS

Name:

Contact Number:

LRCS - CANTEEN MENU - TERM 4, 2021

<u>Snacks - (Recess & Lunch)</u>		<u>Sandwiches</u>		<u>Hot Foods</u>	
Crunch cups (cheese, carrot, celery & cucumber) w/ Aioli sauce	\$3.00	(Gluten free bread available)		Village sausage roll	\$3.50
Yoplait yoghurt 175gm (vanilla)	\$2.50	Cheese	\$3.20	Travellers beef pie	\$3.80
Grain waves (sour crème)	\$1.20	Cheese salad	\$4.20	Party pies village 60gm	\$1.20
Cheese sticks	\$1.00	Cheese & tomato	\$3.60	Sweet chilli chicken tenders	\$1.50
Lite muffins 75gm (chocolate)	\$2.00	Ham, cheese & tomato	\$4.00	Chicken & gravy roll	\$5.50
Koala popcorn (plain, sweet & salty or butterscotch)	\$1.50	Ham or chicken salad	\$4.50	Garlic bread (Good Tucker 75gm)	\$1.30
Fresh fruit (banana,apple,orange)	\$1.00- \$1.50	Ham or chicken	\$3.50	UFO ½ roll	\$2.00
Fruit salad cups	\$1.50	Chicken chilli tender, lettuce & mayo	\$4.50	Cheese & tomato sauce	\$2.00
Jelly & custard	\$2.00	Ham & cheese	\$3.80	Chicken strips per bag (6)	\$3.00
Red rock deli chips (honey soy or sea salt)	\$1.20	Chicken, lettuce & mayo	\$4.00	McCains pizza (Ham/pineapple or ham/cheese)	\$3.00
Smokehouse bbq chips	\$1.50	Egg, lettuce & mayo	\$4.00	Beefburger (lettuce, tomato, cheese & beetroot)	\$5.00
<u>Drinks</u>		Tuna, lettuce & mayo	\$4.00	Chicken burger (lettuce, tomato & mayo)	\$5.00
Spring water 600ml	\$2.00	Vegemite	\$2.80	Chicken strips (each)	\$0.60
Spring Water 1.5ltr	\$3.00	<u>Wraps (Whole Grain)</u>		Beef or chicken noodles	\$2.00
250ml Juice bombs (grape, blackcurrent, apple/ raspberry, watermelon, orange/ passionfruit, lemonade)	\$2.20	Salad wraps	\$6.00	Hot Dogs (w/ sauce: tomato, bbq, mustard)	\$4.00
500ml Juice bombs (grape, raspberry, watermelon).	\$4.20	Chicken or ham salad	\$6.50	w/ cheese	\$0.50
Just Juice poppers 200ml (apple, orange, apple/ blackcurrent)	\$2.00	Chicken, lettuce & mayo	\$5.50	<u>Toasted Sandwiches</u> (Via order)	
Classic 300ml milk (chocolate, strawberry)	\$2.90	Chilli tender, lettuce & mayo	\$6.50	(please order during summer months)	
Big M milk 250ml ctn (chocolate, strawberry)	\$2.00	Tuna, lettuce & mayo	\$5.50	Cheese & ham	\$3.80
Nippys reduced fat 375ml (chocolate, honeycomb) (iced coffee-high school only)	\$2.80	Tuna salad	\$6.50	Ham, cheese & tomato	\$4.00
Plain ctn milk 300ml	\$2.20	<u>Small Salad Bowls</u>		Cheese	\$3.20
500ml ctn milk (chocolate, strawberry) (iced coffee-high school only)	\$4.20	Salad	\$5.00	Cheese & tomato	\$3.60
CANTEEN CLOSING AT 9.00AM FOR ORDERS! NO EXEMPTIONS!		Chicken or ham/egg or tuna	\$5.50	Chicken & cheese	\$4.00
		Mini salad (chicken / mayo / eggs+mayo)	\$3.50	Chilli tender & cheese roll	\$5.50
		<u>Optional Extras</u> (for Salad Boxes)			
		Onion, pineapple - please indicate on order. Also available mayonnaise, Aioli sauce or French/Italian dressing.			
		<u>Ice-creams - (Lunch only)</u>		<u>Miscellaneous</u>	
		Quelch 99% juice tubes (apple, tropical)	\$0.60	Tomato or BBQ sauce	\$0.30
		Ice-blocks (berry buzz, mango delish, pink lemon).	\$1.20	Bundle of lunch bags	\$2.50
		Ice-cream cups	\$1.20	PLEASE PUT RECESS AND LUNCH ORDERS ON SEPARATE BAGS, NAME & CLASS. THANK YOU	
w/ mini milo packets	\$0.30				
		Ka blueys (blue/red/lemon)	\$0.60		
		Frozen twisted yogurts (mango, blueberry, vanilla,	\$2.20		