

LIGHTNING RIDGE CENTRAL SCHOOL



Principal: Mr Kerry Adamthwaite

Deputy Principal: Mrs Margaret Morriss

PO Box 294, Kaolin Street
Lightning Ridge NSW 2834
T 02 68290511 F 02 68290137
E lightningr-c.school@det.nsw.edu.au

Term 3, Week 8 2017

Principal's Report

with Kerry Adamthwaite



Some Facts about Lightning Ridge Central School

We are by far the largest school in our area to find a school anywhere near our size you would have to go to Armidale Tamworth or Dubbo.

Every day we have around 400 students and 80 staff that come to our school with the sole focus of improving the lives of the

children of Lightning Ridge and surrounding areas. (To make this work we need sound rules and strong planning and organisation)

Every day we teach every student to the very best of our ability in a way that is motivating, challenging and promotes our values of Respect Responsibility and Pride.

Every year we have hundreds of extra-curricular activities to support our students learning, socialisation and personal development. We have many activities outside of our classroom, which promote sport and healthy lifestyles, cultural activities and an appreciation of the arts and community events, which promote compassion, citizenship and a sense of responsibility in your children.

Most importantly, **we educate the whole child.**

NAPLAN Results.

A part of holistic learning is literacy and numeracy and each year our students sit for the NAPLAN test in May. We have recently received the student results and they are very encouraging. Our NAPLAN results show that generally our students are developing at or above state expected growth. In fact, the number of students who are in the top 2 bands of their NAPLAN tests has increased in Years 7 and 9 by 37% and in Years 3 and 5 by almost 10%.

Parents will be receiving individual student's results in the near future. Although these results only reflect how a student performed in the exam on one day, they are useful to teachers and they have already analysed the results and identified areas in which they can change their programming to better support student learning. If you have a question about your child's results please do not hesitate to contact the school and make an appointment to see an appropriate staff member.

RIDGE KIDS CAN DO ANYTHING !!!

2017 School Newsletter now available online,
check out our website on www.lightningr-c.schools.nsw.edu.au



NAPLAN

Online Readiness
4th-8th September

K - 6 Assembly
Monday 11th
September

HP Probook 210 GI-
Laptops to be
returned on
11th September

School Photos
Tue 12th & Wed 13th
September

Year 12 Farewell
Assembly
Fri 22nd Sep

Year 11 Final Exams
18th Sep - 21st Sep

Moorambilla Camp
21st Sep - 24th Sep

Year 12 Farewell
Assembly
22nd September

School Holidays
Sat 23rd September
- Tue 10th October



Every Day Counts.

The link between school attendance and student learning is obvious. When students are absent from class they are not part of the learning environment. When they return to school, they have missed important learning activities. We work hard to catch students up when they return from an absence but students who have regular absences inevitably fall further and further behind and feel inadequate and embarrassed at school, which often leads to even more absences and falling further behind.

Our school attendance is much better than most other schools in remote or isolated areas. We expect very high attendance, in fact I believe that the only time a student should miss school is if they are too sick to attend or in exceptional family circumstances.

Because school attendance is so important, we have put a lot of time and effort into our every Day counts program we have recently received independent data on this program and it shows that it our already above average attendance has improved by almost 2% since the introduction of the Every Day Counts program. Our attendance rate last year was about 86% - about 26 days absent from learning. Our target of 95% would be much better, which still means almost 10 days absences per year, is what will continue to work towards.

If your child is absent from school expect to be contacted to discuss how we can reduce the number of absences your child has because at this school we care about every child's education.

A Deadline is a Deadline

For a long time we have tried to support parents and students by accepting payments and permission notes for excursions and other events way past the deadlines that we have set. It seems that the more we try to be flexible to help, the later the notes are handed in by the students.

This causes lots of problems for the staff who volunteer to take excursions, often in their own time with no pay or time off in lieu, it has reached the point when our students think it's okay to hand in a note or money as the bus is about to leave. This is not okay.

To manage our school effectively and protect staff and students we have decided that a deadline is a deadline and when you receive a note home and it has a due date that is when it must be returned. When notes are handed in after the due date, the student will not be eligible to participate. There will be no discussion about this, as all the notes go out with plenty of time to be returned before the due date. Unless, as sometimes happens, we are informed about an event just days before it occurs in which case will be happy to accept notes and money up until the day before the event.

We understand how important it is for students to participate in a wide range of extra-curricular activities however, the problems caused by lateness are causing more staff to decide not to give up their free time to support your children.

Of course, as always, in the event of an emergency or some unforeseen circumstance the deadline cannot be met please contact the school and we would be happy to discuss a compromise in a genuine situation.

Tell Them From Me Survey

Each year we ask parents, students and staff to complete an anonymous survey. The survey is conducted online though an independent company called "The Learning Bar". They send us the results of the survey in a way that does not identify anyone who responds.

The survey is a great way for our school to know how others are thinking and how they see the great things about our school and the things that we could improve.

We take the results of these surveys very seriously and use the results to guide our decisions in the future.

Have your say **NOW** – survey closes early October. If you like, you are welcome in the school to use our computers to complete your survey.

If you would like to discuss anything mentioned in this newsletter or any other matters please feel free to come in and have a chat. Parents and community members are always welcome however; it is wise to make an appointment beforehand to avoid having to wait.



Secondary Report

With Mrs Morriss

The Tell Them From Me Survey is open until the 13th of October 2017 the information gathered from the survey will provide us with important information which will be used to develop our next school plan. The survey is conducted online and will typically take less than 30 minutes to complete. It will be administered during school hours between 21 August and 13 October. Participating in the survey is entirely voluntary.

If you **do not** want your child or children to participate, please return the form to school. Copies of the form and FAQs are available from: <http://surveys.cese.nsw.gov.au/information-for-parents>

More information about the survey is available at: <http://surveys.cese.nsw.gov.au>

The Love Bites program will be held on the 14th & 15th September for all students in Years 9 & 10. This is a valuable program presented by health professionals. The program can be confronting for some students and additional support will be provided. An information letter has been sent home with all students in Years 9&10. If you do not want your child to participate please contact the school so alternative arrangements can be made.

School photos will be taken on the 12th & 13th September it is essential that all students wear FULL school uniform. Please return the envelopes with photo orders including money to the front office as soon as possible.

Year 11 students will be sitting their Yearly Examinations during week 10 of this term. During Term 4 students will be commencing Year 12 studies. Students in Year 11 should now be producing study notes and completing practice examination papers.

The HP ProBook 210 G1 Laptops & chargers need to be returned to school by the 11th September, they will be swapped over with a new laptop. This is a one off swap over, if the laptop is not returned on the 11th September it cannot be swapped over at a later date.

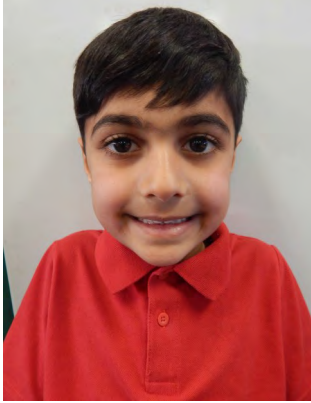
Laptop fees for Term 4 need to be paid to the office by the end of Week 8 unless your child received a *Blue Opal* score, in this case the laptop fee is waived this is our way of rewarding students for their positive work ethic.



School Administrative & Support Staff



VITAL to Education



Primary Student of the Week

Abdul Sohail ES1P

Term 3 Week 8

Abdul is a kind and hardworking student who always tries his best in all school activities. He is always the first to help others and is a wonderful friend for all his peers. Abdul always has a smile on his face and is an excellent role model for other students.

Well done, Abdul!



Primary Student of the Week

Cooper Lohse S1Y

Term 3 Week 7

Cooper is a positive and enthusiastic student who works hard and gives his best. He regularly puts his hand up to give answers and is working to improve his reading and writing. Congratulations Cooper!



Secondary Student of the Week

Toby Brenton Year 9

Term 3 Week 8

Toby has shown consistent commitment to his learning. He is a hard-working and diligent student who always completes his work to the best of his ability. He seeks feedback from his teachers and responds to that feedback to improve the standard of the work he submits in class and in assessment tasks. Toby is polite, punctual and always arrives in full school uniform with all his equipment, and an attitude that shows he is ready to learn. Well done, Toby.



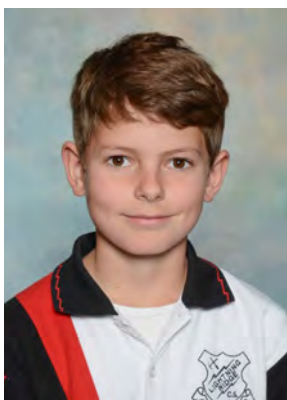


Secondary Student of the Week

Taia-Lee Morris Year 8

Term 3 Week 8

Taia-Lee is hard-working and diligent student who always gives her best in every lesson. She is always well presented and brings all her equipment to every lesson, ensuring that she gets the maximum benefit from her time in class. Taia-Lee seeks feedback from her teachers and incorporates this feedback into her work; this is an important strategy for learning that will help her to achieve her best in Stage 5 and beyond. Well done, Taia-Lee!



Primary Student of the Week

Corbin Sweeney S3C

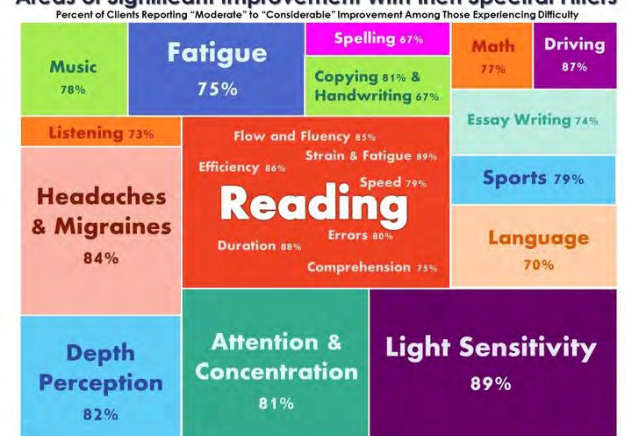
Term 3 Week 8

The Student of the Week from 5/6 Culgoa is Corbin Sweeney. This term Corbin has shown an improvement in maturity and time management. He often greets me with a smile or a fun fact. Corbin is beginning to apply himself to all tasks that are set and strives to overcome any challenging situations in the classroom. He has an inquisitive mind and always loves to contribute to class discussions. Congratulations Corbin on gaining Student of The Week 8, Term 4, 2017. I look forward to continuing to teach you in 2017.

Erin Young, Irlen Diagnostician from Dubbo will be at the school on Tuesday the 19th September to Thursday 21st September. Appointments are available from 12 pm Tuesday until Thursday lunchtime. Should you wish to make an appointment, please contact Erin on 0418 491 806.

Irlen Syndrome (formerly known as Scotopic Sensitivity Syndrome) is a visual perception problem that can be helped with the use of Irlen coloured lenses and/or coloured paper.

Areas of Significant Improvement With Irlen Spectral Filters



Data from 689 Irlen clients interviewed within six months of receiving Irlen Spectral Filters



Library News

with Mrs Fahey

What a wonderful Book Week we had at Lightning Ridge Central School. The theme was *Escape to Everywhere* and I didn't want to go anywhere except in the library.

We had the **Placard Parade** to start Book Week and you would have seen the photos in the last newsletter. Here are a few teacher placards that are displayed in the library.



The winners of the draw were Brianna Kotru and Shamus White. They received a free book from the Book Fair. Many students made their Placards at home this year. The titles were varied but it was interesting to see that Gary, which was a book we studied in library lessons, featured. I would like to thank parents who helped with a Placard at home and also the parents who attended the Placard Parade. Teachers and Office Staff made a great effort with Placards and dressing up and this added to the enjoyment. There were teachers who helped out with classes whose teachers were away, so it was a real team effort. Thank you everyone!

Kerrienne and I did the display and set up the books over the Midterm break so thank you to Kerrienne for giving up time for Book Week. Kerrienne also organised the **Book Fair** sales and returned unsold books to Collins Bookshop in Tamworth.

The **Bake a Book** competition had a fantastic selection of cakes, but also a wonderful selection of books to draw inspiration. It is a big ask for families to enter in this competition but so many of you did and you made it special, not only for your own children but all the others who came to view the cakes. Winning wasn't important but as it was a competition we did have prizes for First place and certificates were for Second and Third place getters. The Teachers entries were fun. Miss Campbell and Miss Francis teamed up to do a humorous entry and I chose *The Stinky Cheeseman and other Fairytales*.

First prize placegetters, who received Cook Books for their prize in the **Bake a Book Competition** were:

ES1: Khiah Boney ES1P Stage 1: Michelle Kranz Stage 2: Izabella Mallouk S2O Stage 3: Tegan McGovern and Treasure –Leigh McBride S3N Secondary: Annika Thompson Teachers: Miss Francis and Miss Campbell



Students enjoyed colouring the Book Week themed colouring picture. The winner of the \$10 Canteen Voucher for the Colouring Competition was: Izaiah Gordon.

On Friday we had the finals of the **Oral Reading Competition** in the library. Barb Moritz and Mark Maclean were our adjudicators and both are passionate about literacy and speaking in particular. This is their second year of being our adjudicators and I thank them for sharing their wisdom and time with our students. We have a wealth of talent and a range of interesting people in our community and I know our school is the better for the sharing of this. The students were fabulous: excited, well prepared and keen to be part of this Book Week event. They read well and had a variety of poems. It was a wonderful celebration of reading and poetry in particular.



Oral Reading Competition Winners 2017

ES1 Mary Boehm - ES1J

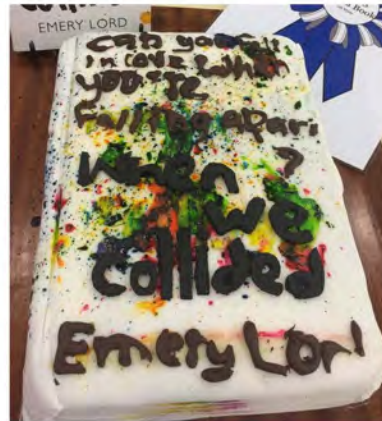
Stage 1 Daniel Piper - S1Y

Stage 2 Brianna Kotru - S2O

Stage 3 Yasmin Mahoney - S3B

Bake a Book





Oral Reading Challenge



Primary Report

Things have been very busy in Primary over the past 2 weeks and the remaining weeks until the end of term, look to be no different.

During week 6, Book Week was amazing! The Placard Parade, Bake-a-book and Oral Reading presentations were tremendous! The quality of cake decorations was outstanding and made judging very difficult. The dedication students made toward their Oral Reading presentations was very evident. I witnessed many students rehearsing in the Library at lunch every day leading up the showcase. Congratulations to all who worked so hard for this fantastic event.

Week 7 saw another busy week brimming with more learning opportunities for our students. It was amazing to see so many Local Blokes and kites in the school. Many thanks to the P&C for coordinating our sausage sizzle and to our dedicated group of helpers, without you, this event would not have happened.

In week 8, students in Years 3, 5, 7 & 9 participated in the NAPLAN Online Readiness Tests. This was a 'practice run' for our school to see how our technology systems worked and plan the logistics for when NAPLAN does eventually go online.

Upcoming events:

Week 9:	Monday 11th September	Primary Assembly from 12.30pm
	Tuesday 12th September	School Photos
	Wednesday 13th September	School Photos
Week 10:	Moorambilla Pre-concert camp	
	Friday 22nd September	Last day of Term 3

Reminders:

- ⇒ With the weather warming up, students will need to bring, and drink, more water
- ⇒ Students need to wear full school uniform including school hats
- ⇒ Students need to be at school **from 8.30am** when supervision begins.
- ⇒ Attendance Counts, our school learning starts at 9am. Please ensure students are at school ready to learn before 9am
- ⇒ Term 4 starts Monday 9th October

Have a fantastic fortnight!

Mrs Jane Miles

Assistant Principal Teaching & Learning

Yuwaalaraay is the dialect of the Lightning Ridge area. The name of the language and Aboriginal people of the Balonne River Region – Yuwaalaraay is connected linguistically to Gamilaraay, the language of the Gamilaroi/Kamilaroi people.

The language area extends across north west NSW on the Barwon River into south west Queensland along the Narran, Culgoa and Balonne Rivers. This area takes in the communities of Hebel, Dirranbandi, and St George, extending south towards Goodooga, Walgett, Lightning Ridge and Collarenebri.

Yuwaalaraay Word of the
Week

Magpie (burrugarrbuu)

Hands on Music

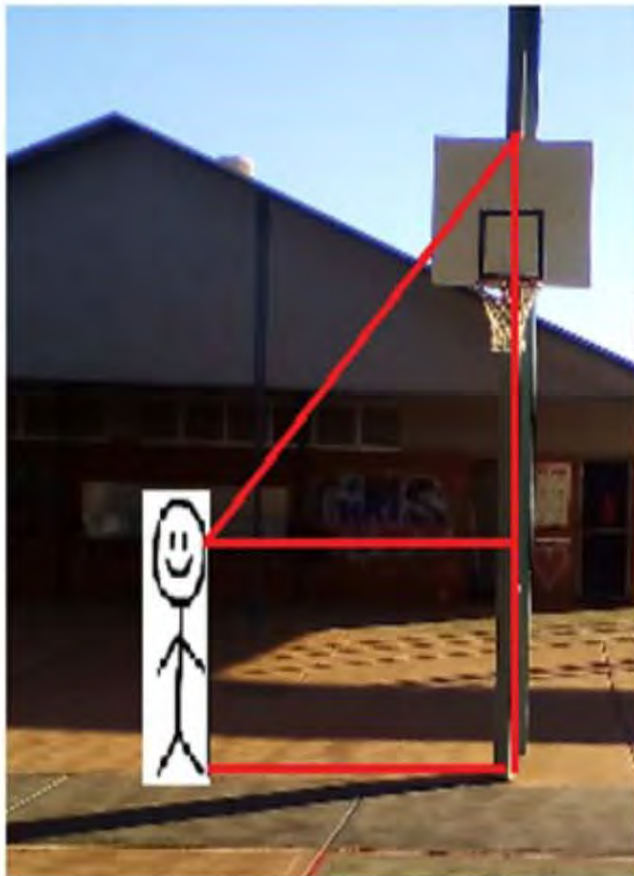


Besides learning about elements of music, styles of music, history of music—Year 7 get down to the real stuff of making music.

This year they have looked at percussion, and wind instruments and now its time to explore timing and melody on the keyboard.

At the start it is serious business but when other students recognise the tune you are playing, there is pride in what you can do. Imagine doing this for a living!





Somehow **Stage 5 Mathematics** were able to put these two things together to measure some tall stuff around the school. Ask them how!

Stage 6 Chemistry.

Checking the equipment:
before distilling the
essence of an idea.

What are all those
glass parts called
again?



Maths Science



We used our 5 senses to describe popcorn!



K-6 Merit Assembly



Oral Reading Challenge

AWESOME



Turtle Award

Good Job...
Thumbs
UP



Barwon Athletics



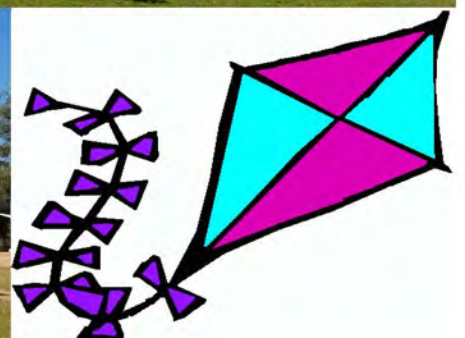
Student of the Week



Primary

Local Blokes Day





SNR Local Blokes Day



Schools and healthy kids

Schools can do a lot to promote and encourage healthy eating and physical activity for their students. This can happen at a whole-of-school level or in individual classrooms.

Here are some ideas to consider:

- Review and refresh approaches to teaching nutrition and physical activity in Personal Development, Health and Physical Education (PDHPE). Visit our **Live Life Well @ School** web page at www.healthykids.nsw.gov.au/campaignsprogramslivelifewell@school.aspx for more information.
- Ensure that the food the school provides in the canteen and during school activities meets the requirements of the **Fresh Tastes @ School – NSW Healthy School Canteen Strategy** and offers food and drinks that are nutritious and low in added sugar, salt and saturated fat.
- Develop a **healthy lunchbox** policy to promote the importance of eating a nutritious lunch and snacks.
- Schedule a **fruit, vegetable and water break** during the day to encourage students to eat fruit and vegetables and drink water.
- Include **'energisers'** during class time to encourage children to get moving.
- Create **activity boxes** with a variety of physical activity equipment that classes or individual children can use during recess or lunch breaks.

“Encourage students to have a water bottle on their desks”



- Develop **homework activities** based on the Personal Development Health and Physical Education (PDHPE) curriculum that encourage children to eat more fruit and vegetables, prepare healthy snacks, drink water instead of sweetened drinks and switch off the TV and computer and be more active.
- Establish a **school vegetable garden** and involve students in all aspects of growing and nurturing the produce – they'll quickly get enthusiastic! Vegies from the garden can be used in food preparation lessons or provided to the school canteen.
- Include regular articles promoting physical activity and healthy eating in the school **newsletter** and include links to the Healthy Kids website (www.healthykids.nsw.gov.au) so parents and children can find more information.

continues over the page ►



An initiative of the NSW Ministry of Health, NSW Department of Education and Communities and the Heart Foundation.

- Develop a **school orientation package** for parents on healthy eating (with a focus on healthy snacks, lunches and drinking water) and activity ideas for children starting school. Highlight the many ways that the school supports healthy eating and physical activity and invite parents to be involved.
- Encourage and support opportunities for physical activity and healthy eating in the after-school period, especially through **Out Of School Hours Care (OOSHC)** programs. Visit our OOSHC programs page for more information at www.healthykids.nsw.gov.au/campaignsprogramslivelifewell@school.aspx
- Work with **parent associations and student representative** councils to hold healthy fundraising activities, such as fun runs, dances or a 'fruit and vegie drive'. They can be great alternatives to selling chocolate bars and other less healthy foods.

- Promote **walking as a form of transport**. Where possible, encourage parents to walk to school (or even part of the way) with their children.
- Get involved with **community and sporting organisations** to arrange sports and skill development sessions so children can participate in a range of different physical activities.
- Encourage students to have a **water bottle** on their desks and drink water throughout the day.

For more information and ideas on healthy eating and physical activity, go to www.healthykids.nsw.gov.au

Information for parents and carers

WHAT IS THE NATIONAL DATA COLLECTION?

The Nationally Consistent Collection of Data on School Students with Disability (the national data collection) is an annual collection that counts the number of school students receiving an adjustment due to disability and the level of reasonable adjustment they are receiving.

The national data collection counts students who have been identified by a school team as receiving an adjustment to address a disability as defined under the *Disability Discrimination Act 1992* (the DDA). The DDA can be accessed from the ComLaw website at www.comlaw.gov.au.

WHAT IS THE BENEFIT FOR MY CHILD?

The aim of the national data collection is to collect quality information about school students receiving an adjustment due to disability in Australia.

This information will help teachers, principals, education authorities and families to better support students with disability to take part in school on the same basis as other students.

The national data collection provides an opportunity for schools to review their learning and support systems and processes to continually improve education outcomes for their students with disability.

WHY IS THIS DATA BEING COLLECTED?

All schools across Australia collect information about students with disability. But the type of information currently collected varies between each state and territory and across government, Catholic and independent school sectors.

When undertaking the national data collection, every school in Australia uses the same method to collect information. Therefore, a government school in suburban Sydney collects and submits data in the same way as a Catholic school in country Victoria and an independent school in the Northern Territory.

The annual collection aims to, over time, lead to nationally consistent, high quality data that will enable schools, education authorities and

The information collected by schools will be available to all governments to inform policy and program improvement for students with disability.

WHO IS INCLUDED IN THE NATIONAL DATA COLLECTION?

The definition of disability for the national data collection is based on the broad definition under the DDA.

For the purposes of the national data collection, students with learning difficulties, such as dyslexia or auditory processing disorder, as well as chronic health conditions like epilepsy or diabetes, that require monitoring and the provision of adjustments by the school, may be included.

WHO COLLECTS INFORMATION FOR THE NATIONAL DATA COLLECTION?

Teachers and school staff count the number of students receiving an adjustment due to disability in their school, and the level of reasonable adjustment they are provided, based on:

- consultation with parents and carers in the course of determining and providing reasonable adjustments
- the school team's observations and professional judgements
- any medical or other professional diagnosis
- other relevant information.

School principals are responsible for ensuring the information identified about each student is accurate.

HOW IS MY CHILD'S PRIVACY PROTECTED?

Protecting the privacy and confidentiality of all students and their families is essential and is an explicit focus of the national data collection. Personal details, such as student names or other identifying information, are not provided to local or federal education authorities.

Further information about privacy is available from www.education.gov.au/notices.

IS THE NATIONAL DATA COLLECTION COMPULSORY?

Yes. All education ministers agreed to full implementation of the national data collection from 2015. This means that all schools must now collect and submit information annually on the number of students receiving adjustments due to disability in their care, and the level of adjustment they receive.

Information about the arrangements that may apply to your school in relation to this data collection is available from your child's school principal and the relevant education authority.

FURTHER INFORMATION

Contact your child's school if you have further questions about the Nationally Consistent Collection of Data on School Students with Disability.

You can also visit www.education.gov.au/nationally-consistent-collection-data-school-students-disability.

An e-learning resource about the Disability Standards for Education 2005 is freely available for the use of individuals, families and communities at <http://resource.dse.theeducationinstitute.edu.au/>.

Every Day COUNTS

At Lightning Ridge Central School we want all our students to get a great education, and the building blocks for a great education begin with students coming to school each and every day.

Every day students learn new things at school—missing school puts them behind.

If students miss school regularly, they miss out on learning the fundamental skills that will set them up for success in later years.

There is no safe number of days for missing school each day a student misses puts them behind, and can affect their educational outcomes.

Attendance patterns are established early. A child regularly missing a day in kindergarten or in the early years of school will often continue to miss classes in the later years, and receive lower grades than their classmates. It is vital that students go to school every day.

Remember, Every Day Counts. If your child must miss school, speak with their classroom teacher as early as possible.

Every Day COUNTS

A day here or there doesn't seem like much, but...

When your child misses just...	that equals....	which is...	and therefore, from Kindy to Year 12, that is...	This means that the best your child can achieve is...
1 day each fortnight	20 days per year	4 weeks per year	Nearly 1 ½ years of school	Equal to finishing Year 11
1 day a week	40 days per year	8 week per year	Over 2 ½ years of school	Equal to finishing Year 10
2 days a week	80 days per year	16 weeks per year	Over 5 years of learning	Equal to finishing Year 7
3 days a week	120 days per year	24 weeks per year	Nearly 8 years of learning	Equal to finishing Year 4

Give your child every chance to succeed...

Ride the School Bus Safely



Getting On

Walk with an adult to the school bus stop.

Wait five BIG steps away from the road.

Wait until the school bus driver says it is safe to get on.

On the School Bus

Go straight to your seat.

Sit facing the front of the school bus.

Do what the school bus driver tells you.

Getting Off

Look out for cars before getting off the school bus.

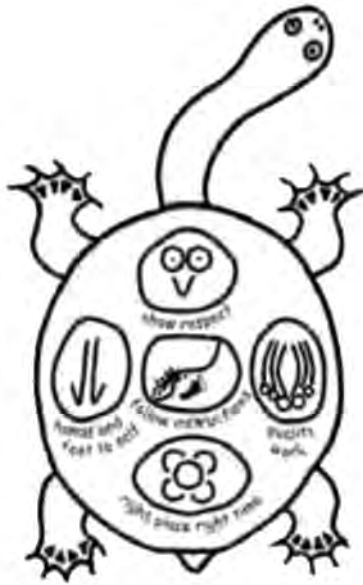
When you're off, take five BIG steps from the school bus.

Look right-left-right to make sure no cars are coming.

Wait until the driver to signal it is safe to cross.

POSITIVE BEHAVIOUR FOR LEARNING (PBL)

@ Lightning Ridge Central School



What is PBL?

Positive Behaviour for Learning is an evidence-based whole school process to improve learning outcomes for all students. Ideally, this involves both students and staff, communicating respectfully, which leads to improved educational outcomes being met.

Students are encouraged to show the following values:

- ♦ **Respect**
- ♦ **Responsibility**
- ♦ **Pride**

PBL Update:

During the pupil-free day at the start of Term 3, all school staff met with the PBL Team to discuss ways in which we can create a safe and positive environment for our students. The staff and the PBL Team agreed upon a set of expectations for all students and staff. Year advisers and classroom teachers have discussed these expectations with students, and they are being implemented consistently in all classrooms.

The expectations are set out under three headings: before class, during class, and after class. They are:

Before class

- Students will stand in 2 lines, quiet and orderly
- Students will have all their equipment for class
- Put food and drinks away
- No head phones or ear buds

During Class

- Teachers will display a lesson sequence (what they're going to teach)
- Students will sit in a seating plan
- Students will stand behind their chair until further instructed
- Teachers will use positive contact, issue turtles/merits to the always good and improvers
- Teachers will constantly scan and monitor the room
- Bags off desks

End of Lesson

- Students will keep working until instructed to pack up
- Teachers will clean the white board
- Seats and tables tucked in and straight; students standing behind chairs
- Clean floor around all students
- Close the windows
- Teacher to dismiss class -- no students hanging around by the door

The term has begun well, with students complying with the expectations. We want everyone to achieve their best at all times, and while some of these expectations might seem like "common sense", we find that it's useful to have this behaviour modelled and reinforced so that everyone knows what is expected of them at all times.

Mr MacLean, PBL Team



Lightning Ridge Central School

Respect · Responsibility · Pride



Dear Parents and Carers

Lightning Ridge Central School will transition to the new NSW Public Schools' finance system and a new bank account on 16th October 2017.

To ensure a smooth transition, there will be changes to the way we accept payments from parents and carers.

1. **Cash and cheque payments:** Between 11 October 2017 and 16 October 2017, we will not be able to accept payments by cash or cheque as we prepare to close our current bank account and transition to the new one. Please ensure you have made any outstanding cash or cheque payments before 11th October 2017.
From 17th October 2017, cash and cheque payments will be accepted as before.
2. **Online payments:** As of 22 September 2017, payments to our current online payment facility will cease. You will not be able to use the Department of Education's Parent Online Payment (POP) system until after 18 October 2017.

Please note:

Cash or cheque payments to our Canteen and Uniform Shop can still be made as usual – as these payments are made directly to Lightning Ridge Central School P&C account.

Thank you for your patience and understanding as we transition to our new finance system. If you have any questions, please contact our School Administration Office 0268 290 511.

M. MORRIS

Margaret Morriss
Deputy Principal

PARKING RESTRICTIONS AROUND SCHOOLS

Parking rules are there to help keep our children safe. They protect sight distances, provide safe pick up and drop off opportunities and minimise confusion where children are crossing roads.

Fines apply for parking illegally and in some situations, demerit points also apply.



No Parking

You may only stop in a No Parking zone while you set down or pick up passengers or goods. You must not stop for more than two minutes. You must remain in or within three metres of your vehicle.

Fines of \$180 + 2 demerit points apply



Bus Zone

You are not permitted to stop in a Bus Zone unless you are driving a public bus.

Fines of \$325 + 2 demerit points apply



Children's Crossing

You must not stop within 20 metres of the approach of a crossing, or within 10 metres after.

Fines of \$433 + 2 demerit points apply



Accessible Parking

Only vehicles transporting a current Mobility Parking Scheme (MPS) permit holder may park in these zones. The MPS permit must be displayed in the parked vehicle.

Fines of \$541 + 1 demerit point apply



No Stopping/No Standing

You must not stop your vehicle in any area zoned with these signs, unless there is a medical or other emergency. Times of operation may apply if stated on the sign.

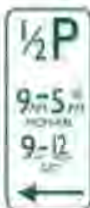
Fines of \$325 + 2 demerits apply



Double Parking

A driver must not stop on a road between the centre of the road and another vehicle parked at the side of the road.

Fines of \$325 + 2 demerits apply



Timed Parking

These signs mean that in certain areas you may park at the kerb for the duration of time shown on the sign between certain hours on particular days.

Fines of \$108 apply for disobeying restrictions

CURRENT AS OF 12 JULY

The information in this document is intended as a guide only, and is subject to change at any time without notice. It does not replace the relevant legislation.



We need you to **EXPLAIN YOUR CHILD'S ABSENCES**

All absences from school are required by law to be recorded. Absences normally fall under two categories – sick or unexplained absence.

In cases where your child is unable to attend school parents are asked to:-

- Contact the school by telephone, letter or the schools Absentee Note if you know in advance, that your child is likely to be absent
- notify the school first thing in the morning when your child is going to be absent. Let the school know the likely date of return and keep them informed if the date changes;
- Give your child an Absentee Note or letter when they return to school explaining the reason for absence
- inform the school of any change to the following :-

home telephone

number mobile

number emergency

contact details

Requests for your child to be absent from school for extended periods such as making a trip away to visit relatives must be made in writing to the Principal, detailing the reason, destination and duration of absence and arrangements for their continuing education. On these occasions your child will be marked as an authorised absentee in the register.



Every Day COUNTS

Absentee Note

Please return this note to the school **within 7 days** of absence

Lightning Ridge Central School PH: (02) 6829 0511

Student's full name: _____ of Class: _____

Was/ will be away from school on.....

The reason for absence is: (Please tick box)

- | | | |
|---|--|---|
| <input type="checkbox"/> Sickness | <input type="checkbox"/> Wet roads | <input type="checkbox"/> Another reason which I will talk to the school about |
| <input type="checkbox"/> Visit to doctor | <input type="checkbox"/> Family business | |
| <input type="checkbox"/> Visit to dentist | <input type="checkbox"/> Family holiday | |
| <input type="checkbox"/> Royal Far West | <input type="checkbox"/> Rep sport, Regional or State carnival | |

Signed.....(Parent/ caregiver)

Date.....

Office use Entered <input type="checkbox"/>
SAO Initial.....



Every Day COUNTS

Absentee Note

Please return this note to the school **within 7 days** of absence

Lightning Ridge Central School PH: (02) 6829 0511

Student's full name: _____ of Class: _____

Was/ will be away from school on.....

The reason for absence is: (Please tick box)

- | | | |
|---|--|---|
| <input type="checkbox"/> Sickness | <input type="checkbox"/> Wet roads | <input type="checkbox"/> Another reason which I will talk to the school about |
| <input type="checkbox"/> Visit to doctor | <input type="checkbox"/> Family business | |
| <input type="checkbox"/> Visit to dentist | <input type="checkbox"/> Family holiday | |
| <input type="checkbox"/> Royal Far West | <input type="checkbox"/> Rep sport, Regional or State carnival | |

Signed.....(Parent/ caregiver)

Date.....

Office use Entered <input type="checkbox"/>
SAO Initial.....



Every Day COUNTS

Absentee Note

Please return this note to the school **within 7 days** of absence

Lightning Ridge Central School PH: (02) 6829 0511

Student's full name: _____ of Class: _____

Was/ will be away from school on.....

The reason for absence is: (Please tick box)

- | | | |
|---|--|---|
| <input type="checkbox"/> Sickness | <input type="checkbox"/> Wet roads | <input type="checkbox"/> Another reason which I will talk to the school about |
| <input type="checkbox"/> Visit to doctor | <input type="checkbox"/> Family business | |
| <input type="checkbox"/> Visit to dentist | <input type="checkbox"/> Family holiday | |
| <input type="checkbox"/> Royal Far West | <input type="checkbox"/> Rep sport, Regional or State carnival | |

Signed.....(Parent/ caregiver)

Date.....

Office use Entered <input type="checkbox"/>
SAO Initial.....



Every Day COUNTS

Absentee Note

Please return this note to the school **within 7 days** of absence

Lightning Ridge Central School PH: (02) 6829 0511

Student's full name: _____ of Class: _____

Was/ will be away from school on.....

The reason for absence is: (Please tick box)

- | | | |
|---|--|---|
| <input type="checkbox"/> Sickness | <input type="checkbox"/> Wet roads | <input type="checkbox"/> Another reason which I will talk to the school about |
| <input type="checkbox"/> Visit to doctor | <input type="checkbox"/> Family business | |
| <input type="checkbox"/> Visit to dentist | <input type="checkbox"/> Family holiday | |
| <input type="checkbox"/> Royal Far West | <input type="checkbox"/> Rep sport, Regional or State carnival | |

Signed.....(Parent/ caregiver)

Date.....

Office use Entered <input type="checkbox"/>
SAO Initial.....

P & C Uniform Shop Price List

Year groups	Summer Uniform	Winter Uniform
K - 4	<ul style="list-style-type: none"> Black shorts Black skorts (girls only) Red polo shirt with school emblem 	<ul style="list-style-type: none"> Black track pants Red polo shirt with school emblem Red sloppy-joe
5 - 9	<ul style="list-style-type: none"> Black shorts or black full length pants Black skorts (girls only) Red/Black/White polo shirt with school emblem 	<ul style="list-style-type: none"> Black shorts or black full length pants Black skorts (girls only) Red/Black/White polo shirt with school emblem Black jumper - 5 - 8 Black jacket Canterbury jersey - yr9 only
10 - 12	<ul style="list-style-type: none"> Black shorts or black full length pants White polo shirt with school emblem 	<ul style="list-style-type: none"> Black shorts or black full length pants White polo shirt with school emblem Black jacket Canterbury jersey



Opening Hours

Monday's & Thursday's

8:30am - 9:00am

WHOLE SCHOOL ITEMS	PRICE	SIZE	QUANTITY	TOTAL
Caps—BB Black Red/ logo	\$7.00			
Hats—Bucket (Black)	\$5.00			
Hats—Red wide brim	\$7.00			
Back Packs Large	\$30.00			
Black Jackets—no logo	\$20.00			
Library Bags	\$5.00			
Sports Shirts—House colours	\$7.00			
JUNIOR K - 4				
Shirts—Red	\$20.00			
Sloppy Joe—Red, logo	\$20.00			
Track pants—Black, Micro fibre	\$24.00			
Track pants—Black, Fleecy	\$20.00			
Shorts—Black <i>old stock. Rugby</i>	\$12.00			
Shorts—Black , Micro fibre, Cargo	\$15.00			
Skorts—Black	\$15.00			
MIDDLE YEAR 5 - 9				
Shirts—Black / Red / White (Stage 3, 4 & 5)	\$25.00			
Jacket— Black (Large sizes only)	\$40.00			
Track pants— Black Fleecy	\$20.00			
Track Pants—Black Micro Fibre	\$24.00			
Jumper—Polo Black Logo 5-8yrs	\$25.00			
Shorts—Black	\$15.00			
Shorts—Black , Micro fibre, Cargo	\$15.00			
Skorts—Black	\$15.00			
Jackets—Red/Black (new)	\$35.00			
Canterbury Jersey 9yrs	\$65.00			
SENIOR YEAR 10 - 12				
Shirts—White	\$20.00			
Jacket—Black/Red	\$40.00			
Track pants— Black Fleecy	\$20.00			
Track Pants— Black Micro Fibre	\$24.00			
Shorts— Black <i>Rugby</i>	\$12.00			
Jackets—Red/Black (new)	\$35.00			
Canterbury Jersey	\$65.00			
			TOTAL	



Join your local P & C committee

A Parents and Citizens Association is a school based organisation consisting of parents, teachers and interested citizens. P&C Associations reflect the role of the community in the local school and provide opportunities to enjoy, learn and communicate with parents interested in the education of children. P & C meetings are held at the school twice per term at 5pm in B2 (old ALR)

Next P & C Meeting dates: Tuesday 24th October

All Welcome!

You are invited to our

PINK RIBBON BRUNCH

COME ALONG TO THE LIGHTNING RIDGE BOWLING CLUB
AND HELP CANCER COUNCIL BEAT WOMEN'S CANCER

SUNDAY OCTOBER 15

Doors open at 9.30am Brunch starts at 10am



\$25
per head

TO BOOK YOUR TABLE
CONTACT LAURA ON
02 68 292 930

Thank you for your support!



The Ridge has got Talent!!!!!!!

Saturday 28th October @ Lightning Ridge Bowling Club

Doors open @ 6pm for 7pm start

Spectator Entry \$10

Talent Entrants Free

1st Prize \$200

2nd \$125

3rd \$75

Phone Megan on 0416 838 140 after 4pm to register your act!!!!!!



supporting G.I.F.T & the L.R.C.S Schools Spectacular Dancers



Lightning Ridge Central School

Respect

Responsibility

Pride



Kaolin Street Po Box 294
Lightning Ridge NSW 2834

Tel: 0268 290 511
Fax: 0268 290 137

email: lightning-c.school@det.nsw.edu.au
web: www.lightning-c.schools.nsw.edu.au

January							
Term/ week	Mon	Tue	Wed	Thu	Fri	Sat	Sun
							1
	2	3	4	5	6	7	8
	9	10	11	12	13	14	15
	16	17	18	19	20	21	22
Term 1 week 1	23	24	25	26	27	28	29
week 2	29	30	31				

February							
Term/ week	Mon	Tue	Wed	Thu	Fri	Sat	Sun
			1	2	3	4	5
week 2			6	7	8	9	10
week 3	11	12	13	14	15	16	17
week 4	18	19	20	21	22	23	24
week 5	25	26	27	28			
week 6							

March							
Term/ week	Mon	Tue	Wed	Thu	Fri	Sat	Sun
			1	2	3	4	5
week 6			6	7	8	9	10
week 7	11	12	13	14	15	16	17
week 8	18	19	20	21	22	23	24
week 9	25	26	27	28	29	30	31
week 10							

April							
Term/ week	Mon	Tue	Wed	Thu	Fri	Sat	Sun
						1	2
week 10						3	4
week 11	5	6	7	8	9	10	11
	12	13	14	15	16	17	18
	19	20	21	22	23	24	25
Term 2 week 1	26	27	28	29	30		
week 2							

May							
Term/ week	Mon	Tue	Wed	Thu	Fri	Sat	Sun
	1	2	3	4	5	6	7
week 2	8	9	10	11	12	13	14
week 3	15	16	17	18	19	20	21
week 4	22	23	24	25	26	27	28
week 5	29	30	31				
week 6							

June							
Term/ week	Mon	Tue	Wed	Thu	Fri	Sat	Sun
				1	2	3	4
week 6				5	6	7	8
week 7	9	10	11	12	13	14	15
week 8	16	17	18	19	20	21	22
week 9	23	24	25	26	27	28	29
week 10	30						

July							
Term/ week	Mon	Tue	Wed	Thu	Fri	Sat	Sun
						1	2
	3	4	5	6	7	8	9
	10	11	12	13	14	15	16
Term 3 week 1	17	18	19	20	21	22	23
week 2	24	25	26	27	28	29	30
week 3	31						

August							
Term/ week	Mon	Tue	Wed	Thu	Fri	Sat	Sun
		1	2	3	4	5	6
week 3		7	8	9	10	11	12
week 4	13	14	15	16	17	18	19
week 5	20	21	22	23	24	25	26
week 6	27	28	29	30	31		
week 7							

September							
Term/ week	Mon	Tue	Wed	Thu	Fri	Sat	Sun
					1	2	3
week 7					4	5	6
week 8	7	8	9	10	11	12	13
week 9	14	15	16	17	18	19	20
week 10	21	22	23	24	25	26	27
	28	29	30				

October							
Term/ week	Mon	Tue	Wed	Thu	Fri	Sat	Sun
							1
	2	3	4	5	6	7	8
Term 4 Week 1	9	10	11	12	13	14	15
week 2	16	17	18	19	20	21	22
week 3	23	24	25	26	27	28	29
week 4	30	31					

November							
Term/ week	Mon	Tue	Wed	Thu	Fri	Sat	Sun
			1	2	3	4	5
week 4			6	7	8	9	10
week 5	11	12	13	14	15	16	17
week 6	18	19	20	21	22	23	24
week 7	25	26	27	28	29	30	
week 8							

December							
Term/ week	Mon	Tue	Wed	Thu	Fri	Sat	Sun
					1	2	3
week 8					4	5	6
week 9	7	8	9	10	11	12	13
week 10	14	15	16	17	18	19	20
	21	22	23	24	25	26	27
	28	29	30	31			

School Holidays

Mid Term Break

Public Holiday / Pupil Free Day

CANTEEN MENU TERM 3 2017

SNACKS (RECESS & LUNCH)

Banana Bread 75g	\$2.50
Snaps pkt BBQ/Tangy salsa	\$1.50
JJ'S chick/pizza/burger/s&v pkt	\$1.00
Grain waves sour crème	\$1.20
Gomes chocolate/Anzac bisc	\$0.80
Snac pac Chocolate 140gm	\$1.50
Yoplait yogurts vanilla/strawberry 175gm	\$2.20
Cheese sticks	\$1.00
Lite sara lee muffins choc	\$2.00
Popcorn	\$1.00
Popcorn salted caramel/Honey	\$1.40
Fun buns (plain or cinnamon)	\$2.00
Fresh fruit banana/apples/oranges	\$1.20
Fruit salad cups	\$1.50

DRINKS

Spring Water 600ml	\$2.00
Quench 10% juice blue/cola/pine lime/orange	
Apple raspberry	\$2.40
350ml Orange/apple/tropical juice	\$2.50
Poppers apple/orange/tropical	\$1.80
Classic 300ml choc/iced coffee/strawb milks	\$2.60
Big M choc/strawb lite ctn milks 250ml	\$2.00
Nippys reduced fat choc/strawb/honeycomb	
Iced coffee 375ml	\$2.50
LOL's Tropical/blackcurrent/Razzbri	\$2.50
Plain ctn milks 300ml	\$2.00

ICECREAMS LUNCH ONLY

Icy poles lemonade/raspberry	\$1.30
Fandangles fairy floss	\$1.50
Chocolate dixie cups/vanilla	\$1.00
Ka blueys blue/red/lemon fizz/strawberry	\$0.50
Billabong choc/rainbow	\$1.50
Fruity ice pops	\$0.60c
Frozen yog. Twisted (straw, raspberry coc, mango	
Watermelon)	\$2.00

SANDWICHES (gluten free bread available)

Cheese	\$2.60
Cheese salad	\$3.70
Cheese & tomato	\$3.00
Ham cheese tomato	\$3.70
Ham or chicken salad	\$3.90
Ham	\$3.20
chicken	\$3.20
Ham & cheese	\$3.50
Chicken lettuce mayo	\$3.60
Egg lettuce mayo	\$3.50
Egg/curried egg	\$3.40
Tuna lettuce mayo	\$3.50
Vegete	\$2.20

WRAPS (WHOLEGRAIN)

Salad wraps	\$5.50
Chicken /Ham salad	\$6.00
Chicken lettuce mayo	\$5.00
Chilli tender lettuce tom avo cheese	\$5.80
Tuna lettuce mayo	\$5.00
Tuna salad	\$6.00

SALAD BOXES (please pre order)

Salad box	\$6.00
Chicken/ham/egg/tuna salad box	\$6.50
(lett/tom/cuc/beet/carrot/cheese/onion optional)	

SMALL SALAD BOWLS

Salad	\$4.50
Chicken/ham/egg/tuna	\$5.00

TOASTED SANDWICHES WRAPS EXTRA 80C

(all toasties cooking spray used)

Cheese & ham	\$3.50
Ham cheese tomato	\$3.70
Ham cheese pineapple	\$3.90
Cheese	\$2.60
Chicken avo cheese	\$3.90
Chicken & cheese	\$3.60
Cheese & tomato	\$3.00
Chilli tend avo cheese roll	\$5.00
Chilli tend tom cheese roll	\$4.80

HOT FOODS

Cheese & Bacon roll	\$1.80
Sausage rolls (lite pastry)	\$3.20
Travellers pies	\$3.50
Party pies lite	\$1.00
Chilli tenders	\$1.50
Garlic bread	\$1.30
UFO ½ roll cheese & tom sauce	\$1.80
Chicken strips per bag (6)	\$3.00
Chicken wedges (4)	\$3.00
Lasagne	\$4.00
Chicken & Gravy roll	\$5.00
Pizza pocket	\$3.20
Pizzas Ham pine or ham cheese	\$3.00

Beefburger (lett/tom/cheese/beet)	\$4.40
Chick. burger (lett/tom/mayo/beet)	\$4.20

Beef or Chicken noodles	\$1.80
Chicken strips ea. (replace nuggets)	\$0.60

GLUTEN FREE (ORDERS ONLY)

Vegi ricotta rolls	\$4.00
Pies (beef)	\$4.00
Sausage rolls	\$3.60

MISCELLANEOUS

Tomato Sauce or BBQ	\$0.30
Bundle of lunch bags	\$2.00

CANTEEN CLOSERS AT 9.30AM FOR ORDERS!
ALL PROFIT GOES TO P&C FOR THE STUDENTS!