

LIGHTNING RIDGE CENTRAL SCHOOL



Principal: Mr Kerry Adamthwaite

Deputy Principal: Mrs Margaret Morriss

PO Box 294, Kaolin Street
Lightning Ridge NSW 2834
T 02 68290511 F 02 68290137
E lightningr-c.school@det.nsw.edu.au

Term 3 , Week 6 2017

Principal's Report

with Kerry Adamthwaite



Tell them From Me Survey

Each year we ask parents, students and staff to complete an anonymous survey. The survey is conducted online through and independent company called "The Learning Bar". They send us the results of the survey in a way that does not identify anyone who responds.

The survey is a great way for our school to know how others are thinking and how they see the great things about our school and the things that we could improve.

We take the results of these surveys very seriously and use the results to guide our decisions in the future.

Have your say NOW – survey closes early October. If you like, you are welcome in the school to use our computers to complete your survey.

Moorambilla

The choir has again had its first round of rehearsals for this year's concert. As usual, Lightning Ridge Central School students made up a large part of the choir and represented the school and our community very well. Congratulations to all students who were successful in competing for a place in this prestigious choir and special thanks to all the families who made the effort to make sure their children could participate. Special thanks goes to Mr Shannon who arranged the transport for the students and volunteered to drive the bus from School to Baradine himself a number of times.

Goodooga Indigenous Games

Another very successful day was held at Goodooga this year. Thanks to the students who represented our school so well and the staff who volunteered to do the organisation and supervise on the day. The enjoyment of competition and the good fun and camaraderie on the day makes all the extra work by our staff worthwhile. We look forward to next year's event – Thanks Goodooga.

Ricky Walford/Neville Thorne

Both the Ricky Walford and Neville Thorne competitions have been held in the last few weeks and our students competed actively and enjoyed the opportunity to play against other schools' teams.

Our students played hard, tried their best to be good sports, and represented our school with pride both on and off the field.

RIDGE KIDS CAN DO ANYTHING !!!

2017 School Newsletter now available online,
check out our website on www.lightningr-c.schools.nsw.edu.au



Fathers Day Stall
Tue 29th Aug - Fri 1st
September

K - 6 Assembly
Monday 9th
September

P & C Meeting
Tue 29th Aug

Local Blokes Day
Fri 1st Sep

School Photos
Tue 12th & Wed 13th
September

Year 12 Farewell
Assembly
Fri 22nd Sep

NAPLAN
Online Readiness
4th-8th September



References

I am often asked to provide references for our students. This is always a pleasure as it gives me an opportunity to highlight what great students we have. I like to show how well they do academically, the wide range of extra-curricular activities they participate in as well as personal comments and absence data.

This takes time and a number of staff to identify and bring together all the information and then I write the reference. The whole process usually takes a few weeks to do properly in between all the other work we have to do. Please give as much notice as you can if you want a reference – **I usually ask for 3 weeks' notice. If you ask for a reference for your child at short notice, it will not be possible.**

If you would like to discuss anything mentioned in this newsletter or any other matters please feel free to come in and have a chat. Parents and community members are always welcome however; it is wise to make an appointment beforehand to avoid having to wait.



Secondary Report

With Mrs Morris

Thanks to all the parents who have completed our community survey during the last couple of weeks. The information gathered from this will be used to make improvements in your children's learning and to determine future directions at LRCS.

The survey is open until Friday 25th August if you have not yet completed the survey please go to our Facebook page or drop into the office to complete a survey.

All surveys are anonymous and we appreciate any feedback that you can provide.

Tell Them From Me Survey

I am delighted that this term, our school, like many other public schools in the state, will participate in a Department of Education initiative: the *Tell Them From Me* student feedback survey. The survey measures factors that are known to affect academic achievement and other student outcomes. The focus of the NSW-wide survey is on student wellbeing, engagement and effective teaching practices.

You may remember that our students also participated in a *Tell Them From Me* student survey in Term 1 this year. Asking students to complete the survey twice in one year allows us to identify trends in student responses as well as track engagement and motivation across the school year.

The survey is a great opportunity for our students to provide us with valuable and quick feedback on what they think about school life, how engaged they are with school and the different ways that teachers interact with them. Schools in Australia and around the world have used the *Tell Them From Me* survey to help improve how they do things at school.

More information about the survey is available at: <http://surveys.cese.nsw.gov.au>

I want to assure you that the survey is confidential. The survey is conducted online and will typically take less than 30 minutes to complete. It will be administered during school hours between 21 August and 13 October. Participating in the survey is entirely voluntary.

A consent form and FAQs for parents/carers about the survey is included in this newsletter. If you do not want your child or children to participate, please return the form to school by the 31st August 2017. Copies of the form and FAQs are available from: <http://surveys.cese.nsw.gov.au/information-for-parents>.

To access the survey go to <https://nsw.tellthemfromme.com/cv356>

During Week 5 students in Year 10 started completing their subject selections for Year 11 2018. Students and some parents were presented with a range of information about subjects available and NESA (NSW Education Standard Authority) rules and guidelines. Thank you to Mrs Murray for her informative presentation.

On Wednesday 23rd August at 11:30-12:30 students in Year 8 will be presented with information about subjects available in Year 10. Parents are most welcome to attend this informative session.

Trial exams are currently being held for Year 12 students as they near their HSC exams in October. All year 12 students are required to attend all classes up until Friday 22nd September. During this time valuable revision, exam preparation and completing exam papers will occur. All Year 12 students must attend every day— **remember ‘Every Day Counts’**.

Year 11 students will be sitting their Yearly Examination during Week 10 of this term.

During Week 9 students in Stage 5 will be involved in a program called Love Bites.

WHAT IS LOVE BITES?

LOVEBITES is an extremely successful Domestic and Family Violence and Sexual Assault prevention program. LoveBites is an educational program as recommended by the Federal Government.

Lovebites aims to provide a safe environment in which young people can talk about Domestic and Family Violence and Sexual Assault. It also aims to promote and model respectful relationships for young people. Information will be coming home shortly regarding the program.



Education
Centre for Education
Statistics & Evaluation

***Tell Them From Me* student survey:
Information and consent form for
parents and carers**



17th August 2017

Dear Parents and Carers

This term, our school is taking part in the *Tell Them From Me* student survey. The survey will provide us with valuable feedback on what our students think about school life, how engaged they are with school and the different ways that teachers interact with them. Schools in Australia and around the world have used the *Tell Them From Me* survey to help them improve. The survey is completed on-line and is run by an independent research company, **The Learning Bar**, which specialises in school-based surveys.

Staff in schools will **not** be able to identify individual students from their responses. To ensure confidentiality, participating students will receive a unique username and password. Where fewer than five students respond to a question, the results will be suppressed. The survey typically takes 30 minutes or less to complete and will be administered by the school during normal school hours. Once the surveys are completed by students, reports are prepared and in most cases are available to schools within three business days.

This survey will help our school better understand how to improve student wellbeing and engagement. It will help the school identify what works to improve student outcomes.

Participating in the survey is entirely voluntary. Your child will not take part if either you or your child do not wish. If, during the survey, your child is uncomfortable, he/she can choose to stop the survey at any time. The majority of questions in the survey can be skipped.

If you **do not want your child to take part** in the survey, please complete the attached form and return it to your child's school by 31st August 2017

More information about the survey and the research is available in English on the CESE website: <http://surveys.cese.nsw.gov.au/information-for-parents>

Kerry Adamthwaite
Principal
Lightning Ridge Central School
Evaluation

Dr Jenny Donovan
Executive Director
Centre for Education Statistics and

***Tell Them From Me* Student Feedback Survey non-consent form**

If you **do not want** your child to participate in the student feedback survey, please sign this form and return it to the school by 31st August 2017

I DO NOT give consent for my child/children to participate in the ***Tell Them From Me* student feedback survey.**

Name of student 1

Roll class of student 1

Name of student 2

Roll class of student 2

Name of student 3

Roll class of student 3

Name of student 4

Roll class of student 4

Name of parent/carer

Signature of parent/carer

Date

CENTRE FOR EDUCATION STATISTICS AND EVALUATION

E cese@det.nsw.edu.au

www.cese.nsw.gov.au

Primary Report



I hope everyone is feeling better after the spate of recent illness. While 'Every Day Counts' it is also important that unwell students stay at home until feeling better. This assists in stopping the spread the germs to others. A note explaining your child's absence on return is all that is needed.

Stage 2 and Stage 3 excursions are fast approaching. Full payments are needed for your child to attend. Part payments can be made to assist with family budgets at any point. Our lovely office staff are all to happy to assist.

On the subject of our amazing office staff. Just a reminder that the office staff are there to help and assist in school matters. They do not make the rules or decisions regarding excursions, pass outs and so on. If there is a problem or issue with a school matter, please make an appointment to see the relevant person.

Stage 3 have been cooking up a storm in the kitchen. I was fortunate to sample a delicious taco from MR Britts class. Yum!! S3C was busy making a beef stroganoff. My sample of this dish must have been lost on the way to me. Well done stage. Unfortunately, the Healthy Outback Kids program run by the Outback Division of General Practice has had their funding cut. Karl Zajac is longer able to come in an offer healthy eating and cooking classes for stage 2. These lesson were a hit with years 3 and 4 and an alternate solution is being discussed.

School photos will be taken on Tuesday 12th and Wednesday 13th of September (Week 9). Envelopes/information has been sent home with each student. There is a selection of packages and payment methods. The envelopes can be returned to the school with payment or are to be brought in on the day of the photos.

Congratulations to those students that have been offered an opportunity to participate in the Moorambilla choir and dance groups. This is an amazing opportunity and one I am sure they will fondly remember. Keep an eye out in the newsletter for information on how you can purchase tickets to this wonderful event.

We have a rather busy school and try to offer our students as many opportunities as possible. Be it sporting, academic or social type events. It all takes organisation by staff members and at times your child may receive a series of permission notes. As stated previously, permission notes have a return by date that must be adhered to for the overall organisation of the event.



Library News

with Mrs Fahey



Well the Book Week theme is *Escape to Everywhere* and I escaped for the Mid Term break. I think it is important to escape the Ridge sometimes but **coming home and getting into a book at night isn't bad either...you can escape to somewhere** in your home or garden or even the bush.

I was able to source my Bake a Book ingredients whilst away...well if you come into the library on Thursday you will see I am not that creative but I do participate which is what I hope our **students will do. When your kids say, "I don't want to do that" or even "I'm not doing that."** I suggest you do not give them the opt out option if it is something they will benefit from. **There's no escape!!**

As I write this we are getting ready for Book Week. Planning the display, discussing where the **Book Fair will be placed and where the Oral Reading judges will sit, I've made certificates,** signs and wrapped prizes. I do so love Book Week and I hope you will be able to attend some part of it. Below is the information which will help you to attend and be involved.

[Book Week is in Week 6](#)

[Tuesday 22nd August to Friday 25th August.](#)

Week 6: Book Week (after mid-term break) Theme is ***'Escape to Everywhere'***

Book Fair (Books from Collins Book sellers in Tamworth for sale) runs from Tuesday – Friday lunchtime in the library.

Tuesday 22nd August

K-6 Placard Parade, 9.10am in the Junior Quad. Students walk in classes displaying their favourite book on a cardboard sheet. They can also dress up in a costume that depicts their favourite book. All who participate have names put in a draw and two will win a book from the Book Fair.

Book Week themed lessons and Colouring Competition.

Book Fair

Wednesday 23rd August

Book Week themed lessons and Colouring Competition.

Book Fair

Thursday 24th August

K-12 Bake a Book competition. Cakes are decorated to look like a favourite book. Please **deliver the cakes to the library by 10 o'clock. Stage prizes of recipe books.**

Book Week themed lessons and Colouring Competition.

Book Fair



Friday 25th August

Oral Reading Competition **finals in the library starting at 10 o'clock.** Two students from each class read a poem. Book prizes for Stage winners and certificates for finalists.

Judging of **K-6 Colouring Competition on Book Week theme: 'Escape to Everywhere'**, winner receives a \$10 Canteen voucher prize

Book Fair finishes lunchtime.

Thank you to Yvonne Woodcock who always thinks of others and managed to get us some free books for our Library. Yvonne also gives us plastic bags for kids to look after their borrowed library book.

The winners of the Library Turtle Draw have recently been:

ES1 Mary Boehm, Stage 1

Cooper Lohse S1Y Stage 2

Layla Dench S2O Stage 3

Savannah Chesworth S3B

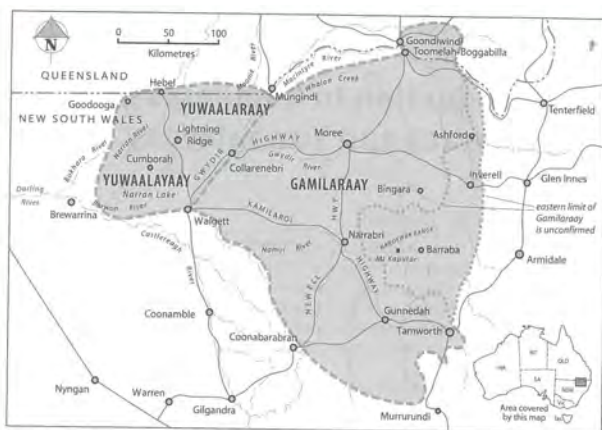
Hope to see you at school during Book Week,



Penny Fahey Teacher-Librarian

Yuwaalaraay is the dialect of the Lightning Ridge area. The name of the language and Aboriginal people of the Balonne River Region – Yuwaalaraay is connected linguistically to Gamilaraay, the language of the Gamilaroi/Kamilaroi people.

The language area extends across north west NSW on the Barwon River into south west Queensland along the Narran, Culgoa and Balonne Rivers. This area takes in the communities of Hebel, Dirranbandi, and St George, extending south towards Goodooga, Walgett, Lightning Ridge and Collarenebri.



Yuwaalaraay Word of the
Week

Bandaarr (Kangaroo)

Information for parents and carers

WHAT IS THE NATIONAL DATA COLLECTION?

The Nationally Consistent Collection of Data on School Students with Disability (the national data collection) is an annual collection that counts the number of school students receiving an adjustment due to disability and the level of reasonable adjustment they are receiving.

The national data collection counts students who have been identified by a school team as receiving an adjustment to address a disability as defined under the *Disability Discrimination Act 1992* (the DDA). The DDA can be accessed from the ComLaw website at www.comlaw.gov.au.

WHAT IS THE BENEFIT FOR MY CHILD?

The aim of the national data collection is to collect quality information about school students receiving an adjustment due to disability in Australia.

This information will help teachers, principals, education authorities and families to better support students with disability to take part in school on the same basis as other students.

The national data collection provides an opportunity for schools to review their learning and support systems and processes to continually improve education outcomes for their students with disability.

WHY IS THIS DATA BEING COLLECTED?

All schools across Australia collect information about students with disability. But the type of information currently collected varies between each state and territory and across government, Catholic and independent school sectors.

When undertaking the national data collection, every school in Australia uses the same method to collect information. Therefore, a government school in suburban Sydney collects and submits data in the same way as a Catholic school in country Victoria and an independent school in the Northern Territory.

The annual collection aims to, over time, lead to nationally consistent, high quality data that will enable schools, education authorities and

The information collected by schools will be available to all governments to inform policy and program improvement for students with disability.

WHO IS INCLUDED IN THE NATIONAL DATA COLLECTION?

The definition of disability for the national data collection is based on the broad definition under the DDA.

For the purposes of the national data collection, students with learning difficulties, such as dyslexia or auditory processing disorder, as well as chronic health conditions like epilepsy or diabetes, that require monitoring and the provision of adjustments by the school, may be included.

WHO COLLECTS INFORMATION FOR THE NATIONAL DATA COLLECTION?

Teachers and school staff count the number of students receiving an adjustment due to disability in their school, and the level of reasonable adjustment they are provided, based on:

- consultation with parents and carers in the course of determining and providing reasonable adjustments
- the school team's observations and professional judgements
- any medical or other professional diagnosis
- other relevant information.

School principals are responsible for ensuring the information identified about each student is accurate.

HOW IS MY CHILD'S PRIVACY PROTECTED?

Protecting the privacy and confidentiality of all students and their families is essential and is an explicit focus of the national data collection. Personal details, such as student names or other identifying information, are not provided to local or federal education authorities.

Further information about privacy is available from www.education.gov.au/notices.

IS THE NATIONAL DATA COLLECTION COMPULSORY?

Yes. All education ministers agreed to full implementation of the national data collection from 2015. This means that all schools must now collect and submit information annually on the number of students receiving adjustments due to disability in their care, and the level of adjustment they receive.

Information about the arrangements that may apply to your school in relation to this data collection is available from your child's school principal and the relevant education authority.

FURTHER INFORMATION

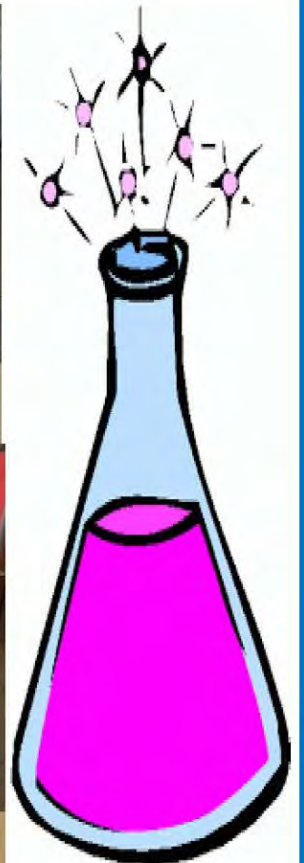
Contact your child's school if you have further questions about the Nationally Consistent Collection of Data on School Students with Disability.

You can also visit www.education.gov.au/nationally-consistent-collection-data-school-students-disability.

An e-learning resource about the Disability Standards for Education 2005 is freely available for the use of individuals, families and communities at <http://resource.dse.theeducationinstitute.edu.au/>.

Science Fair 2017

I wish to say a HUGE thank you to all the students who participated in the 2017 Science Fair. I would also like to thank all the parents and community that came in to have a look at all the entries.



Congratulations to our winners and all the participants. We look forward to seeing what will be shown at next year's Science Fair..



Congratulations to our winners and all the participants. We look forward to seeing what will be shown at next year's Science Fair..

Kindy - 1st Olivia Newman

Stage 1 - **1st** Musa Akram **2nd** Daniel Piper **3rd** Amelia Reavell

Stage 2 - **1st** Lilly Kaluski/Leeanna Tucker **2nd** Ellie Gough/Izabella Mallouk **3rd** Dylan Mallouk

Stage 3 - **1st** Rianna Haverhoek/Ellie Barrett **2nd** Kiara Barrett/Lucy Barrett **3rd** Grace McBride/Treasure McBride

Stage 4 - **1st** Des Sharkey/Mahad Sohail MC **1st** - Primary class prize



Primary Student of the Week

Alexi Hayes S1D

Term 3 Week 5

Alexi is a friendly and dedicated student who always tries her best. She works hard in the classroom to produce quality work and is kind towards others on the playground. Alexi is always eager to try new things and approaches all classroom activities with enthusiasm. She consistently follows our school turtle goals and is a valued member of our class. Well done, Alexi!

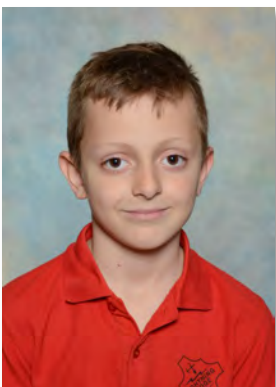


Primary Student of the Week

RJ Moseling S2F

Term 3 Week 5

RJ is our student of the week, and deservedly so. His behaviour at school is exemplary. He is a thoughtful, kind and quietly determined student who shows respect for himself and his school every day. RJ has become more eager to take responsibility for his own learning. We are so lucky to have you in our class RJ.



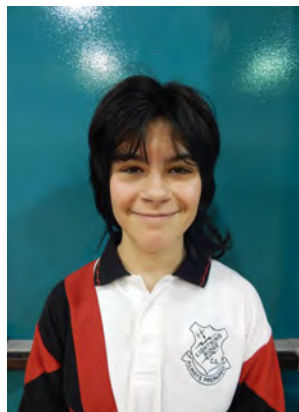
Primary Student of the Week

Michael Wiesnet S2F

Term 3 Week 6

Michael is our student of the week this week. He has shown personal and academic progress in class and in the playground. Michael shows respect to his teachers, friends and visitors and takes responsibility for his words and actions. Michael shows pride in his work and school environment. We are tremendously proud of Michael's achievements this year.





Primary Student of the Week

Gabriel Rees Year 7

Term 3 Week 5

Gabriel is an outstanding student who always gives her best in every lesson. She arrives in the right place at the right time, and has all her equipment at the ready. Gabriel's attitude towards her learning sets a great example to her fellow students. She works hard and seeks feedback from her teachers. You've had a great year, Gabriel!

MUDGEES NORTH-WEST LEGACY



Legacy Badge Day, 1 September 2017

One unique organisation stands by the dependants of veterans who gave their lives or health in the service of their nation. Legacy cares for the families of defence force personnel killed in war or other hazardous service, in peacekeeping operations or in accidents whilst training for war, and those who have died subsequently or are incapacitated. Caring for this extended family is a big task as we seek to assist them in coping with their lives, both financially and emotionally, whether they are young or old. We help organise housing, education, medical expenses and important special things, like simple companionship. Legacy is funded by public donations, which enable us to perform our legacy of care.

There are over 200 widows and dependants in Mudgee North West Division who depend on Legacy.

Badges are available at our office at 133 Market Street, Mudgee, in \$2.00, \$5.00, \$10.00 and larger denominations. We also have pens, wristbands and Army, Navy, Nurse, Digger and Air Force bears.

Book Week Placard Parade





Every Day COUNTS

At Lightning Ridge Central School we want all our students to get a great education, and the building blocks for a great education begin with students coming to school each and every day.

Every day students learn new things at school—missing school puts them behind.

If students miss school regularly, they miss out on learning the fundamental skills that will set them up for success in later years.

There is no safe number of days for missing school each day a student misses puts them behind, and can affect their educational outcomes.

Attendance patterns are established early. A child regularly missing a day in kindergarten or in the early years of school will often continue to miss classes in the later years, and receive lower grades than their classmates. It is vital that students go to school every day.

Remember, Every Day Counts. If your child must miss school, speak with their classroom teacher as early as possible.

Every Day COUNTS

A day here or there doesn't seem like much, but...

When your child misses just...	that equals....	which is...	and therefore, from Kindy to Year 12, that is...	This means that the best your child can achieve is...
1 day each fortnight	20 days per year	4 weeks per year	Nearly 1 ½ years of school	Equal to finishing Year 11
1 day a week	40 days per year	8 week per year	Over 2 ½ years of school	Equal to finishing Year 10
2 days a week	80 days per year	16 weeks per year	Over 5 years of learning	Equal to finishing Year 7
3 days a week	120 days per year	24 weeks per year	Nearly 8 years of learning	Equal to finishing Year 4

Give your child every chance to succeed...

NAPLAN Online Readiness 2017

This term from 14 August to 22 September, schools across NSW will be participating in the NAPLAN Online school readiness test. The school readiness test is a 'practice run' designed to help schools assess their technical and administrative readiness for the transition to NAPLAN Online.

*Lightning Ridge Central School students in Years 3, 5, 7 & 9 will be participating in the readiness test between **Monday 4th September and Friday 8th September, 2017.***

The readiness test will involve our 2017 students in Years 3, 5, 7 and 9 sitting two, 40-minute assessment: a writing test and a combined numeracy/literacy test. (Year 3 students will not participate in the writing test & will only need to sit the combined numeracy/literacy test).

*Student participation in the readiness test is an opportunity for them to become familiar with the NAPLAN Online test format. **It is not an assessment of student ability and there will be no reporting of student results.***

It is important to note that participation in the school readiness test has no effect on students' NAPLAN results from the paper-based tests students sat in May.

There's a lot more information on the department's NAPLAN Online website: <https://education.nsw.gov.au/teaching-and-learning/student-assessment/naplan-online>

More information

For more information about NAPLAN Online and the NSW school readiness test:

- Visit the DoE Website: <https://education.nsw.gov.au/teaching-and-learning/student-assessment/naplan-online>
- Contact the NAPLAN Online transition team NAPLANonline@det.nsw.edu.au Phone: 1300 790 844



Frequently asked questions

Which students will participate in the NAPLAN Online School Readiness Test?

Students in Years 3, 5, 7 and 9 will participate.

How should I prepare my child for the NAPLAN Online School Readiness Test?

Your child will not need any academic preparation for the school readiness test. This is not a test of their literacy and numeracy skills, but an opportunity for them to experience the online test format and for their school to assess its online testing capability.

How long is the school readiness test?

The school readiness test is expected to include two assessments: a writing assessment* and a combined numeracy/literacy assessment. The duration of each assessment will be approximately 40 minutes.

** Year 3 students will only be expected to complete the combined numeracy/literacy assessment.*

When will my school participate in the readiness test?

One week within the test period in August and September will be identified for each school to conduct readiness testing.

How will students be prevented from using the internet or spellcheckers when completing the test?

The NAPLAN Online assessment platform will have state-of-the-art security protections. The assessment is delivered inside a locked-down browser. This ensures students cannot access the internet or spellcheckers while completing the test.

Will schools and parents be provided with information on the results of the readiness test?

There will be feedback to schools about the technical information gained from the readiness testing. There will be no reporting of student test results from the readiness test.

Fact sheet for parents and carers

The National Assessment Program – Literacy and Numeracy (NAPLAN) is an annual national assessment for students in Years 3, 5, 7 and 9. Planning has begun to move NAPLAN from a pen and paper assessment to an online assessment.

10/05/17 37/154

What are the benefits of NAPLAN Online?

Results will be faster and more precise

- Your child's individual results will be returned to you within just a few weeks of the NAPLAN testing.
- Online assessment will reduce the time it takes to mark and provide feedback to schools, teachers and parents.
- Improved precision and timing of results will help teachers to tailor their teaching more specifically to address students' learning needs.

Tailored tests will provide better assessment

- The online format allows for 'tailored testing', where the test adapts to a student's performance and asks questions that match their achievement level.
- Students in each year level start with the same set of questions which can then branch into a different set of questions based on their responses to the first set of questions.
- This means that students will be directed to questions that may be easier or more challenging depending on their responses.
- This test design will allow students to better demonstrate their literacy and numeracy skills.
- Students find online assessment is more engaging*, which means they are encouraged to persist longer and try harder.

* Research by the Australian Curriculum, Assessment and Reporting Authority (ACARA) into online assessment has shown that students have engaged well with electronic tests.

NAPLAN Online School Readiness Test

NSW schools will participate in a school readiness test between 14 August and 22 September 2017.

The school readiness test is a 'practice run' for schools to assess their technology ahead of NAPLAN Online. The readiness test is not an assessment of student ability. The readiness test allows schools to:

- become familiar with the NAPLAN Online test format and processes
- check whether they have the technical capacity, rooms and devices to administer NAPLAN Online
- provide students in NAPLAN years 3, 5, 7 and 9 with the opportunity to experience the online test question types and format by completing a practice NAPLAN online test.

For more information

Parents, students and schools interested in familiarising themselves with the NAPLAN Online format can access the NAPLAN Online demonstration site that includes sample tests for each NAPLAN year. Use the following link:

<http://www.nap.edu.au/online-assessment/naplan-online/naplan-online-public-demonstration-site>

Further information about NAPLAN Online is available on the national ACARA website:

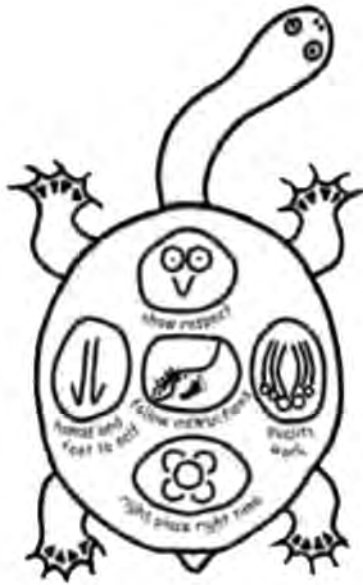
<http://www.nap.edu.au/online-assessment/naplan-online>

Contact your school principal or visit the ACARA NAP website for more detailed information:

<http://www.nap.edu.au/online-assessment/online-assessment.html>

POSITIVE BEHAVIOUR FOR LEARNING (PBL)

@ Lightning Ridge Central School



What is PBL?

Positive Behaviour for Learning is an evidence-based whole school process to improve learning outcomes for all students. Ideally, this involves both students and staff, communicating respectfully, which leads to improved educational outcomes being met.

Students are encouraged to show the following values:

- ♦ **Respect**
- ♦ **Responsibility**
- ♦ **Pride**

PBL Update:

During the pupil-free day at the start of Term 3, all school staff met with the PBL Team to discuss ways in which we can create a safe and positive environment for our students. The staff and the PBL Team agreed upon a set of expectations for all students and staff. Year advisers and classroom teachers have discussed these expectations with students, and they are being implemented consistently in all classrooms.

The expectations are set out under three headings: before class, during class, and after class. They are:

Before class

- Students will stand in 2 lines, quiet and orderly
- Students will have all their equipment for class
- Put food and drinks away
- No head phones or ear buds

During Class

- Teachers will display a lesson sequence (what they're going to teach)
- Students will sit in a seating plan
- Students will stand behind their chair until further instructed
- Teachers will use positive contact, issue turtles/merits to the always good and improvers
- Teachers will constantly scan and monitor the room
- Bags off desks

End of Lesson

- Students will keep working until instructed to pack up
- Teachers will clean the white board
- Seats and tables tucked in and straight; students standing behind chairs
- Clean floor around all students
- Close the windows
- Teacher to dismiss class -- no students hanging around by the door

The term has begun well, with students complying with the expectations. We want everyone to achieve their best at all times, and while some of these expectations might seem like "common sense", we find that it's useful to have this behaviour modelled and reinforced so that everyone knows what is expected of them at all times.

Mr MacLean, PBL Team

K-6 School Merit Assembly





PARKING RESTRICTIONS AROUND SCHOOLS

Parking rules are there to help keep our children safe. They protect sight distances, provide safe pick up and drop off opportunities and minimise confusion where children are crossing roads.

Fines apply for parking illegally and in some situations, demerit points also apply.



No Parking

You may only stop in a No Parking zone while you set down or pick up passengers or goods. You must not stop for more than two minutes. You must remain in or within three metres of your vehicle.

Fines of \$180 + 2 demerit points apply



Bus Zone

You are not permitted to stop in a Bus Zone unless you are driving a public bus.

Fines of \$325 + 2 demerit points apply



Children's Crossing

You must not stop within 20 metres of the approach of a crossing, or within 10 metres after.

Fines of \$433 + 2 demerit points apply



Accessible Parking

Only vehicles transporting a current Mobility Parking Scheme (MPS) permit holder may park in these zones. The MPS permit must be displayed in the parked vehicle.

Fines of \$541 + 1 demerit point apply



No Stopping/No Standing

You must not stop your vehicle in any area zoned with these signs, unless there is a medical or other emergency. Times of operation may apply if stated on the sign.

Fines of \$325 + 2 demerits apply



Double Parking

A driver must not stop on a road between the centre of the road and another vehicle parked at the side of the road.

Fines of \$325 + 2 demerits apply



Timed Parking

These signs mean that in certain areas you may park at the kerb for the duration of time shown on the sign between certain hours on particular days.

Fines of \$108 apply for disobeying restrictions

CURRENT AS OF 12 JULY

The information in this document is intended as a guide only, and is subject to change at any time without notice. It does not replace the relevant legislation.



Monday 4th September 2017
Lightning Ridge Bowling Club
1 Agate St Lightning Ridge
10 – 4pm

If you have a disability, care for or provide a service to someone with a disability; then you should come along for a yarn & feed.
Ask questions and be prepared for the new Disability funding scheme starting from 1st July 2017 in your area.

NDIS: Straight Up!

This workshop offers Aboriginal and Torres Strait Islander individuals and carers a better understanding of the NDIS, how to prepare to access the NDIS, and to start 'pre-planning'.

Learn about the NDIS

Come and find out the answers to:

- What is the NDIS?
- What do they do?
- Who is it for?

Learn the answers to:
Why are you here?
Why is change happening?
Where to from here?

Start thinking about what YOU want for your life and get help starting your plan
As part of this workshop we explore what you want in your life and look at setting goals. We can help with some tools to help you start your plan.

Hear from:

Hear Real Stories from Real People who have already done their own plan.

THIS IS ABOUT YOU AND YOUR FUTURE!

RSVP REQUIRED for catering purposes:

Ring Kareena on 02 6841 1548 or email Kareena.vincent@facs.nsw.gov.au
Do you need transport and child minding, let Kareena know when you RSVP.



**Family &
Community Services**
Ageing, Disability & Home Care

**Aboriginal Disability
Projects**





We need you to **EXPLAIN YOUR CHILD'S ABSENCES**

All absences from school are required by law to be recorded. Absences normally fall under two categories – sick or unexplained absence.

In cases where your child is unable to attend school parents are asked to:-

- Contact the school by telephone, letter or the schools Absentee Note if you know in advance, that your child is likely to be absent
- notify the school first thing in the morning when your child is going to be absent. Let the school know the likely date of return and keep them informed if the date changes;
- Give your child an Absentee Note or letter when they return to school explaining the reason for absence
- inform the school of any change to the following :-

home telephone

number mobile

number emergency

contact details

Requests for your child to be absent from school for extended periods such as making a trip away to visit relatives must be made in writing to the Principal, detailing the reason, destination and duration of absence and arrangements for their continuing education. On these occasions your child will be marked as an authorised absentee in the register.



Every Day COUNTS

Absentee Note

Please return this note to the school **within 7 days** of absence

Lightning Ridge Central School PH: (02) 6829 0511

Student's full name: _____ of Class: _____

Was/ will be away from school on.....

The reason for absence is: (Please tick box)

- | | | |
|---|--|---|
| <input type="checkbox"/> Sickness | <input type="checkbox"/> Wet roads | <input type="checkbox"/> Another reason which I will talk to the school about |
| <input type="checkbox"/> Visit to doctor | <input type="checkbox"/> Family business | |
| <input type="checkbox"/> Visit to dentist | <input type="checkbox"/> Family holiday | |
| <input type="checkbox"/> Royal Far West | <input type="checkbox"/> Rep sport, Regional or State carnival | |

Signed.....(Parent/ caregiver)

Date.....

Office use Entered <input type="checkbox"/> SAO Initial.....
--



Every Day COUNTS

Absentee Note

Please return this note to the school **within 7 days** of absence

Lightning Ridge Central School PH: (02) 6829 0511

Student's full name: _____ of Class: _____

Was/ will be away from school on.....

The reason for absence is: (Please tick box)

- | | | |
|---|--|---|
| <input type="checkbox"/> Sickness | <input type="checkbox"/> Wet roads | <input type="checkbox"/> Another reason which I will talk to the school about |
| <input type="checkbox"/> Visit to doctor | <input type="checkbox"/> Family business | |
| <input type="checkbox"/> Visit to dentist | <input type="checkbox"/> Family holiday | |
| <input type="checkbox"/> Royal Far West | <input type="checkbox"/> Rep sport, Regional or State carnival | |

Signed.....(Parent/ caregiver)

Date.....

Office use Entered <input type="checkbox"/> SAO Initial.....
--



Every Day COUNTS

Absentee Note

Please return this note to the school **within 7 days** of absence

Lightning Ridge Central School PH: (02) 6829 0511

Student's full name: _____ of Class: _____

Was/ will be away from school on.....

The reason for absence is: (Please tick box)

- | | | |
|---|--|---|
| <input type="checkbox"/> Sickness | <input type="checkbox"/> Wet roads | <input type="checkbox"/> Another reason which I will talk to the school about |
| <input type="checkbox"/> Visit to doctor | <input type="checkbox"/> Family business | |
| <input type="checkbox"/> Visit to dentist | <input type="checkbox"/> Family holiday | |
| <input type="checkbox"/> Royal Far West | <input type="checkbox"/> Rep sport, Regional or State carnival | |

Signed.....(Parent/ caregiver)

Date.....

Office use Entered <input type="checkbox"/> SAO Initial.....
--



Every Day COUNTS

Absentee Note

Please return this note to the school **within 7 days** of absence

Lightning Ridge Central School PH: (02) 6829 0511

Student's full name: _____ of Class: _____

Was/ will be away from school on.....

The reason for absence is: (Please tick box)

- | | | |
|---|--|---|
| <input type="checkbox"/> Sickness | <input type="checkbox"/> Wet roads | <input type="checkbox"/> Another reason which I will talk to the school about |
| <input type="checkbox"/> Visit to doctor | <input type="checkbox"/> Family business | |
| <input type="checkbox"/> Visit to dentist | <input type="checkbox"/> Family holiday | |
| <input type="checkbox"/> Royal Far West | <input type="checkbox"/> Rep sport, Regional or State carnival | |

Signed.....(Parent/ caregiver)

Date.....

Office use Entered <input type="checkbox"/> SAO Initial.....
--

P & C Uniform Shop Price List

Year groups	Summer Uniform	Winter Uniform
K - 4	<ul style="list-style-type: none"> Black shorts Black skorts (girls only) Red polo shirt with school emblem 	<ul style="list-style-type: none"> Black track pants Red polo shirt with school emblem Red sloppy-joe
5 - 9	<ul style="list-style-type: none"> Black shorts or black full length pants Black skorts (girls only) Red/Black/White polo shirt with school emblem 	<ul style="list-style-type: none"> Black shorts or black full length pants Black skorts (girls only) Red/Black/White polo shirt with school emblem Black jumper - 5 - 8 Black jacket Canterbury jersey - yr9 only
10 - 12	<ul style="list-style-type: none"> Black shorts or black full length pants White polo shirt with school emblem 	<ul style="list-style-type: none"> Black shorts or black full length pants White polo shirt with school emblem Black jacket Canterbury jersey



Opening Hours

Monday's & Thursday's

8:30am - 9:00am

WHOLE SCHOOL ITEMS	PRICE	SIZE	QUANTITY	TOTAL
Caps—BB Black Red/ logo	\$7.00			
Hats—Bucket (Black)	\$5.00			
Hats—Red wide brim	\$7.00			
Back Packs Large	\$30.00			
Black Jackets—no logo	\$20.00			
Library Bags	\$5.00			
Sports Shirts—House colours	\$7.00			
JUNIOR K - 4				
Shirts—Red	\$20.00			
Sloppy Joe—Red, logo	\$20.00			
Track pants—Black, Micro fibre	\$24.00			
Track pants—Black, Fleecy	\$20.00			
Shorts—Black <i>old stock. Rugby</i>	\$12.00			
Shorts—Black , Micro fibre, Cargo	\$15.00			
Skorts—Black	\$15.00			
MIDDLE YEAR 5 - 9				
Shirts—Black / Red / White (Stage 3, 4 & 5)	\$25.00			
Jacket— Black (Large sizes only)	\$40.00			
Track pants— Black Fleecy	\$20.00			
Track Pants—Black Micro Fibre	\$24.00			
Jumper—Polo Black Logo 5-8yrs	\$25.00			
Shorts—Black	\$15.00			
Shorts—Black , Micro fibre, Cargo	\$15.00			
Skorts—Black	\$15.00			
Jackets—Red/Black (new)	\$35.00			
Canterbury Jersey 9yrs	\$65.00			
SENIOR YEAR 10 - 12				
Shirts—White	\$20.00			
Jacket—Black/Red	\$40.00			
Track pants— Black Fleecy	\$20.00			
Track Pants— Black Micro Fibre	\$24.00			
Shorts— Black <i>Rugby</i>	\$12.00			
Jackets—Red/Black (new)	\$35.00			
Canterbury Jersey	\$65.00			
			TOTAL	



Join your local P & C committee

A Parents and Citizens Association is a school based organisation consisting of parents, teachers and interested citizens. P&C Associations reflect the role of the community in the local school and provide opportunities to enjoy, learn and communicate with parents interested in the education of children.

P & C meetings are held at the school twice per term at 5pm in B2 (old ALR)

Next P & C Meeting dates: Tuesday 29th August

All Welcome!



The Ridge has got Talent!!!!!!!

Saturday 28th October @ Lightning Ridge Bowling Club

Doors open @ 6pm for 7pm start

Spectator Entry \$10

Talent Entrants Free

1st Prize \$200

2nd \$125

3rd \$75

Phone Megan on 0416 838 140 after 4pm to register your act!!!!!!



supporting G.I.F.T & the L.R.C.S Schools Spectacular Dancers

JOIN US FOR BOOK WEEK

WEEK 6

TUE 22ND - FRI 25TH AUG

TUESDAY - PLACARD PARADE
THURSDAY - BAKE A BOOK COMPETITION
FRIDAY - ORAL READING COMPETITION



Book Fair



ESCAPE TO EVERYWHERE
CBCA BOOK WEEK 19-26 AUGUST 2017

WALGETT LITTLE A's

FAMILY, FUN & FITNESS
FOR ALL CHILDREN 3 & OVER

16TH AUG – 22ND NOV 2016
EVERY WEDNESDAY NIGHT
@ No. 1 Oval
5.30 – 7.30PM

COST: \$65 per child

Online Registrations OPEN 1ST AUG
www.lansw.com.au
All registrations to be completed online.

REGISTRATION DAYS
TUES 8TH & WED 9TH AUG
3.30PM-6PM @ Walgett Sporting Club
These will be the ONLY DAYS for assistance with
registrations and payment (for those unable to access
online) and uniform collection.

Contact Camilla Rowntree to be added to the Walgett L.As mailing list:
camrowntree@bigpond.com

Contact Lyndsay Potter for assistance with registrations:
lyndsay.potter2@gmail.com



FATHER'S DAY STALL

Moorambilla Fathers Day Stall

Tuesday 29th August

to

Friday 1st September



Gifts range from \$2 - \$10

Open Recess & Lunch

Moorambilla fundraiser

LOCAL BLOKES

You're invited to join
Lightning Ridge Central School
Students to celebrate the wonderful
contribution our local blokes
make to our community.

Time: 11:30am - 2:00pm

When: Friday 1st September

Where: Lightning Ridge Central School

Fun activities and free sausage sizzle!!

More Info: Lightning Ridge Central School 0268 290 511



Food for Families

Open Wednesday, Thursday, Friday &
Saturday
9am - 12 noon

CHOOSE FROM \$10,
\$20 OR \$30 PACKS.

NOT INCOME TESTED -
EVERYONE WELCOME



Located in Opal
Street (next to
Barriekneal
Service Station)

PosterMyWall.com



Lightning Ridge Central School

Respect

Responsibility

Pride



Kaolin Street Po Box 294
Lightning Ridge NSW 2834

Tel: 0268 290 511
Fax: 0268 290 137

email: lightning-c.school@det.nsw.edu.au
web: www.lightning-c.schools.nsw.edu.au

January							
Term/ week	Mon	Tue	Wed	Thu	Fri	Sat	Sun
							1
	2	3	4	5	6	7	8
	9	10	11	12	13	14	15
	16	17	18	19	20	21	22
Term 1 week 1	23	24	25	26	27	28	29
week 2	29	30	31				

February							
Term/ week	Mon	Tue	Wed	Thu	Fri	Sat	Sun
			1	2	3	4	5
week 2							
week 3	6	7	8	9	10	11	12
week 4	13	14	15	16	17	18	19
week 5	20	21	22	23	24	25	26
week 6	27	28					

March							
Term/ week	Mon	Tue	Wed	Thu	Fri	Sat	Sun
			1	2	3	4	5
week 6							
week 7	6	7	8	9	10	11	12
week 8	13	14	15	16	17	18	19
week 9	20	21	22	23	24	25	26
week 10	27	28	29	30	31		

April							
Term/ week	Mon	Tue	Wed	Thu	Fri	Sat	Sun
						1	2
week 10							
week 11	3	4	5	6	7	8	9
	10	11	12	13	14	15	16
	17	18	19	20	21	22	23
Term 2 week 1	24	25	26	27	28	29	30

May							
Term/ week	Mon	Tue	Wed	Thu	Fri	Sat	Sun
	1	2	3	4	5	6	7
week 2							
week 3	8	9	10	11	12	13	14
week 4	15	16	17	18	19	20	21
week 5	22	23	24	25	26	27	28
week 6	29	30	31				

June							
Term/ week	Mon	Tue	Wed	Thu	Fri	Sat	Sun
				1	2	3	4
week 6							
week 7	5	6	7	8	9	10	11
week 8	12	13	14	15	16	17	18
week 9	19	20	21	22	23	24	25
week 10	26	27	28	29	30		

July							
Term/ week	Mon	Tue	Wed	Thu	Fri	Sat	Sun
						1	2
	3	4	5	6	7	8	9
	10	11	12	13	14	15	16
Term 3 week 1	17	18	19	20	21	22	23
week 2	24	25	26	27	28	29	30
week 3	31						

August							
Term/ week	Mon	Tue	Wed	Thu	Fri	Sat	Sun
		1	2	3	4	5	6
week 3							
week 4	7	8	9	10	11	12	13
week 5	14	15	16	17	18	19	20
week 6	21	22	23	24	25	26	27
week 7	28	29	30	31			

September							
Term/ week	Mon	Tue	Wed	Thu	Fri	Sat	Sun
					1	2	3
week 7							
week 8	4	5	6	7	8	9	10
week 9	11	12	13	14	15	16	17
week 10	18	19	20	21	22	23	24
	25	26	27	28	29	30	

October							
Term/ week	Mon	Tue	Wed	Thu	Fri	Sat	Sun
							1
	2	3	4	5	6	7	8
Term 4 Week 1	9	10	11	12	13	14	15
week 2	16	17	18	19	20	21	22
week 3	23	24	25	26	27	28	29
week 4	30	31					

November							
Term/ week	Mon	Tue	Wed	Thu	Fri	Sat	Sun
			1	2	3	4	5
week 4							
week 5	6	7	8	9	10	11	12
week 6	13	14	15	16	17	18	19
week 7	20	21	22	23	24	25	26
week 8	27	28	29	30			

December							
Term/ week	Mon	Tue	Wed	Thu	Fri	Sat	Sun
					1	2	3
week 8							
week 9	4	5	6	7	8	9	10
week 10	11	12	13	14	15	16	17
	18	19	20	21	22	23	24
	25	26	27	28	29	30	31

School Holidays

Mid Term Break

Public Holiday / Pupil Free Day

CANTEEN MENU TERM 3 2017

SNACKS (RECESS & LUNCH)

Banana Bread 75g	\$2.50
Snaps pkt BBQ/Tangy salsa	\$1.50
JJ'S chick/pizza/burger/s&v pkt	\$1.00
Grain waves sour crème	\$1.20
Gomes chocolate/Anzac bisc	\$0.80
Snac pac Chocolate 140gm	\$1.50
Yoplait yogurts vanilla/strawberry 175gm	\$2.20
Cheese sticks	\$1.00
Lite sara lee muffins choc	\$2.00
Popcorn	\$1.00
Popcorn salted caramel/Honey	\$1.40
Fun buns (plain or cinnamon)	\$2.00
Fresh fruit banana/apples/oranges	\$1.20
Fruit salad cups	\$1.50

DRINKS

Spring Water 600ml	\$2.00
Quench 10% juice blue/cola/pine lime/orange	
Apple raspberry	\$2.40
350ml Orange/apple/tropical juice	\$2.50
Poppers apple/orange/tropical	\$1.80
Classic 300ml choc/iced coffee/strawb milks	\$2.60
Big M choc/strawb lite ctn milks 250ml	\$2.00
Nippys reduced fat choc/strawb/honeycomb	
Iced coffee 375ml	\$2.50
LOL's Tropical/blackcurrent/Razzbri	\$2.50
Plain ctn milks 300ml	\$2.00

ICECREAMS LUNCH ONLY

Icy poles lemonade/raspberry	\$1.30
Fandangles fairy floss	\$1.50
Chocolate dixie cups/vanilla	\$1.00
Ka blueys blue/red/lemon fizz/strawberry	\$0.50
Billabong choc/rainbow	\$1.50
Fruity ice pops	\$0.60c
Frozen yog. Twisted (straw, raspberry coc, mango	
Watermelon)	\$2.00

SANDWICHES (gluten free bread available)

Cheese	\$2.60
Cheese salad	\$3.70
Cheese & tomato	\$3.00
Ham cheese tomato	\$3.70
Ham or chicken salad	\$3.90
Ham	\$3.20
chicken	\$3.20
Ham & cheese	\$3.50
Chicken lettuce mayo	\$3.60
Egg lettuce mayo	\$3.50
Egg/curried egg	\$3.40
Tuna lettuce mayo	\$3.50
Vegemite	\$2.20

WRAPS (WHOLEGRAIN)

Salad wraps	\$5.50
Chicken /Ham salad	\$6.00
Chicken lettuce mayo	\$5.00
Chilli tender lettuce tom avo cheese	\$5.80
Tuna lettuce mayo	\$5.00
Tuna salad	\$6.00

SALAD BOXES (please pre order)

Salad box	\$6.00
Chicken/ham/egg/tuna salad box	\$6.50
(lett/tom/cuc/beet/carrot/cheese/onion optional)	

SMALL SALAD BOWLS

Salad	\$4.50
Chicken/ham/egg/tuna	\$5.00

TOASTED SANDWICHES WRAPS EXTRA 80C

(all toasties cooking spray used)

Cheese & ham	\$3.50
Ham cheese tomato	\$3.70
Ham cheese pineapple	\$3.90
Cheese	\$2.60
Chicken avo cheese	\$3.90
Chicken & cheese	\$3.60
Cheese & tomato	\$3.00
Chilli tend avo cheese roll	\$5.00
Chilli tend tom cheese roll	\$4.80

HOT FOODS

Cheese & Bacon roll	\$1.80
Sausage rolls (lite pastry)	\$3.20
Travellers pies	\$3.50
Party pies lite	\$1.00
Chilli tenders	\$1.50
Garlic bread	\$1.30
UFO ½ roll cheese & tom sauce	\$1.80
Chicken strips per bag (6)	\$3.00
Chicken wedges (4)	\$3.00
Lasagne	\$4.00
Chicken & Gravy roll	\$5.00
Pizza pocket	\$3.20
Pizzas Ham pine or ham cheese	\$3.00

Beefburger (lett/tom/cheese/beet)	\$4.40
Chick. burger (lett/tom/mayo/beet)	\$4.20

Beef or Chicken noodles	\$1.80
Chicken strips ea. (replace nuggets)	\$0.60

GLUTEN FREE (ORDERS ONLY)

Vegi ricotta rolls	\$4.00
Pies (beef)	\$4.00
Sausage rolls	\$3.60

MISCELLANEOUS

Tomato Sauce or BBQ	\$0.30
Bundle of lunch bags	\$2.00

CANTEEN CLOSERS AT 9.30AM FOR ORDERS!
ALL PROFIT GOES TO P&C FOR THE STUDENTS!